



Hydraulic Foot Pumps



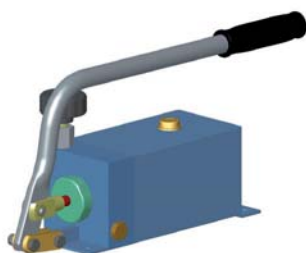
GL



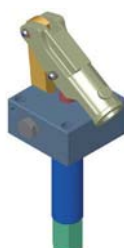
GLA



GL2 CN



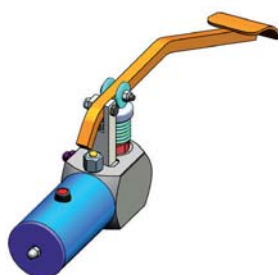
GLDE



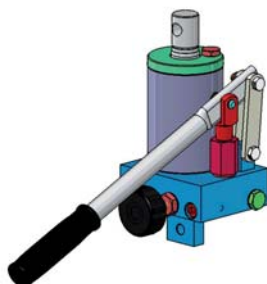
GL 277



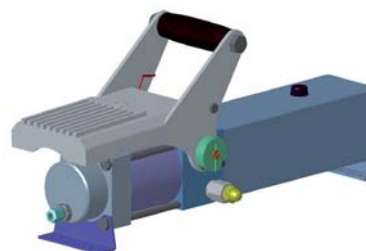
GL2P/Q



GLAPN



GTE



GLOP

Hydraulic Hand Pumps

Issue n° **HT 20 / A / 309 / 0912 / E** (Replaces all previous edition)

COPYING AND TRASLATION. EVEN OF EXTRACTS, ONLY WITH PRIOR WRITTEN PERMISSION OF THE PUBLISHER. ALL RIGHTS RESERVED. SUBJECT TO REVISION.

The specific data are for product description purposes only and must not be interpreted as warranted characteristics in legal sense.

Protection: external protection is generally with painting RAL 5015 (Blue), on liquid base for models with tank, while epoxy powder for models with cast iron housing.

Aluminium parts are anodized

Lever parts and others is partially zinc-coated.

Special protection are possible on request.

ASSEMBLY, COMMISSIONING AND MAINTENANCE OF THE PRODUCTS DESCRIBED IN THIS CATALOGUE:

SEE HANDBOOK

The main performance curves and the specifications shown in this catalogue are obtained by using mineral based fluid ISO VG 46, with cleanliness class of 17/15/12 ISO 4406 (Class 7 NAS 1638) at a temperature of 50°C.

HYDRAULIC FLUIDS:

General properties:

The fluid must have physical lubricating and chemical properties suitable for use in hydraulic systems, such as, for example:

MINERAL OIL BASED HYDRAULIC FLUIDS HL (DIN 51524 part 1)

MINERAL OIL BASED HYDRAULIC FLUIDS HLP (DIN 51524 part 2)

For use of other fluids, environmentally friendly fluids or fire resistant fluids, please consult our Tech. Dpt.

Applications



Culvert cover lifter



Airport ground support equipment

Concrete truck mixer



Furniture press

Applications



Hydraulic starter for marine diesel engine



Special structures for disabled persons

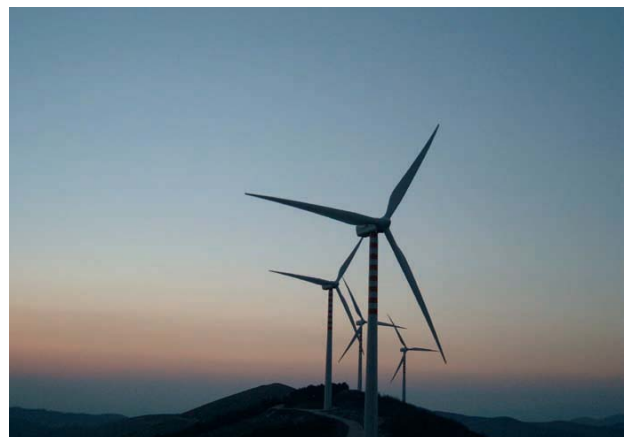
All purpose platform








Aerial platform



Windmill





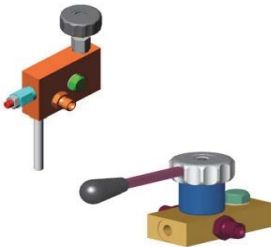
Contents

Description		Pump Type	Page
Double acting pumps cast-iron housing without tank		ZIE CATALOGUS HANDPOMPEN	
Double acting pumps cast-iron housing with tank		ZIE CATALOGUS HANDPOMPEN	
Twin piston double acting cast-iron housing		ZIE CATALOGUS HANDPOMPEN	
Double acting pumps steel/aluminium housing without tank		ZIE CATALOGUS HANDPOMPEN	
Double acting pumps steel/aluminium housing with tank		ZIE CATALOGUS HANDPOMPEN	

Contents

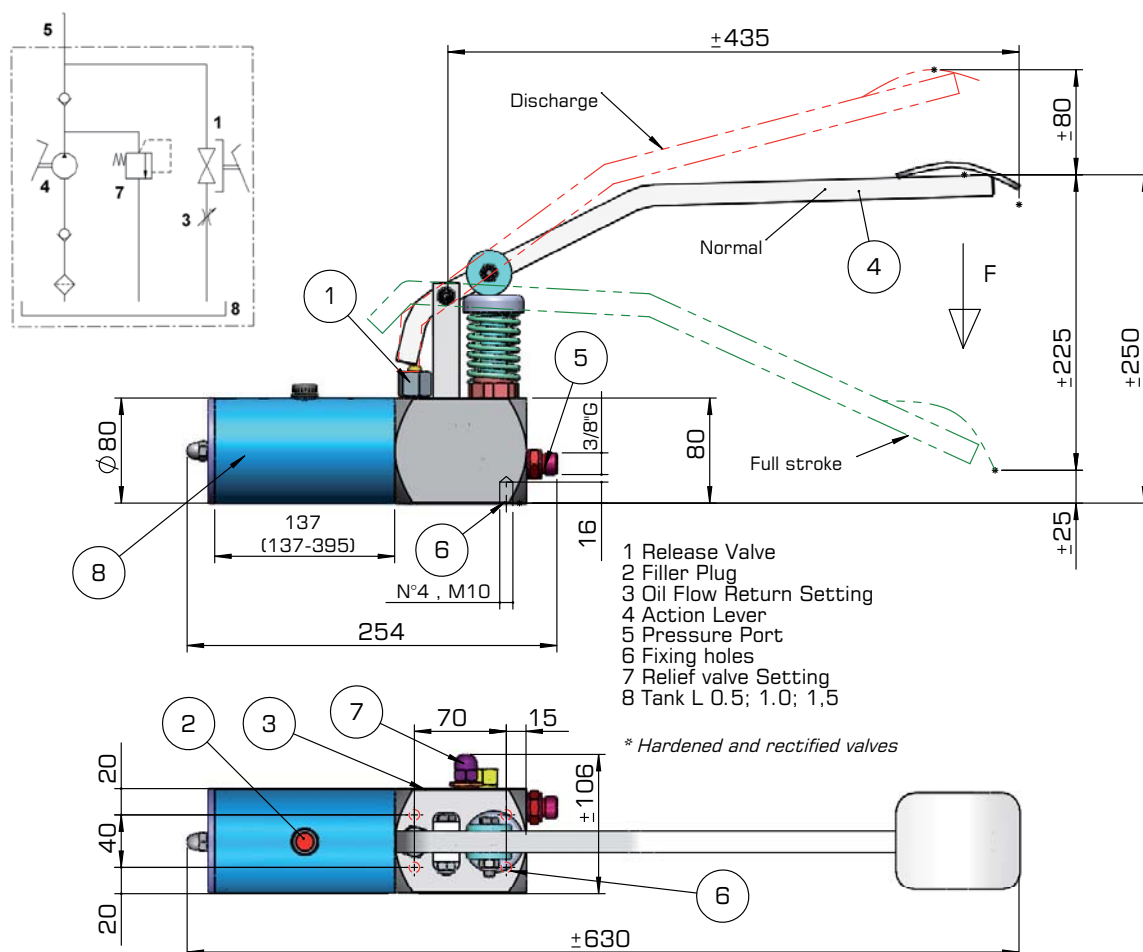
Description	Pump Type	Page
Single acting pump without tank		ZIE CATALOGUS HANDPOMPEN
Single acting pump with tank		ZIE CATALOGUS HANDPOMPEN
Single-acting multiple piston pumps		ZIE CATALOGUS HANDPOMPEN
Two speed pumps		ZIE CATALOGUS HANDPOMPEN
Foot pedal pumps		GLAPN (16-25) 77 GL 100 P 78 GL 115 MP-P 79 GL 138 P 80 GL 144 P 81 GL 219 82

Contents

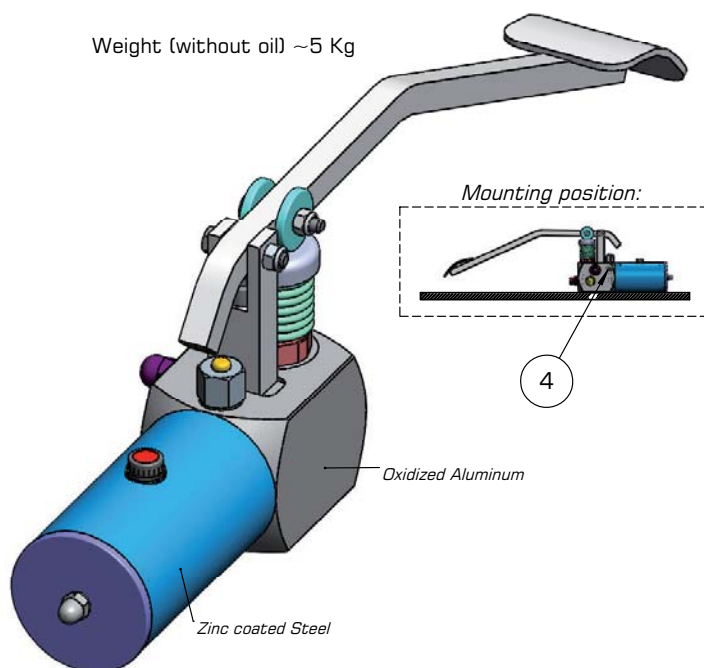
Description	Pump Type	Page
<p>Pumps with built-in cylinder</p>  <p>Jack and Foot</p>	<p>ZIE CATALOGUS CILINDERS MET HANDPOMP</p>	
<p>Air-Hydraulic pumps</p> 	<p>ZIE CATALOGUS LUCHTGEDREVEN POMPEN</p>	
<p>Valves and Accessories</p> 	<p>GL 4 VN RVM R1V VMP VEM D DV</p>	<p>108 109 109 110 110 111 111</p>

Hydraulic Pedal Pump Type GLAPN (16-25)

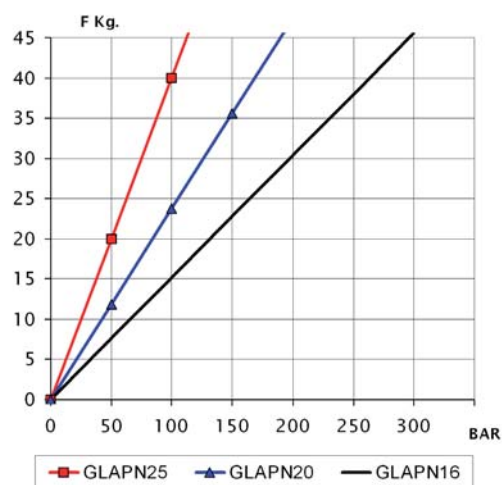
Single acting function pedal pump with relief valve and release function for single acting cylinder



Weight (without oil) ~5 Kg



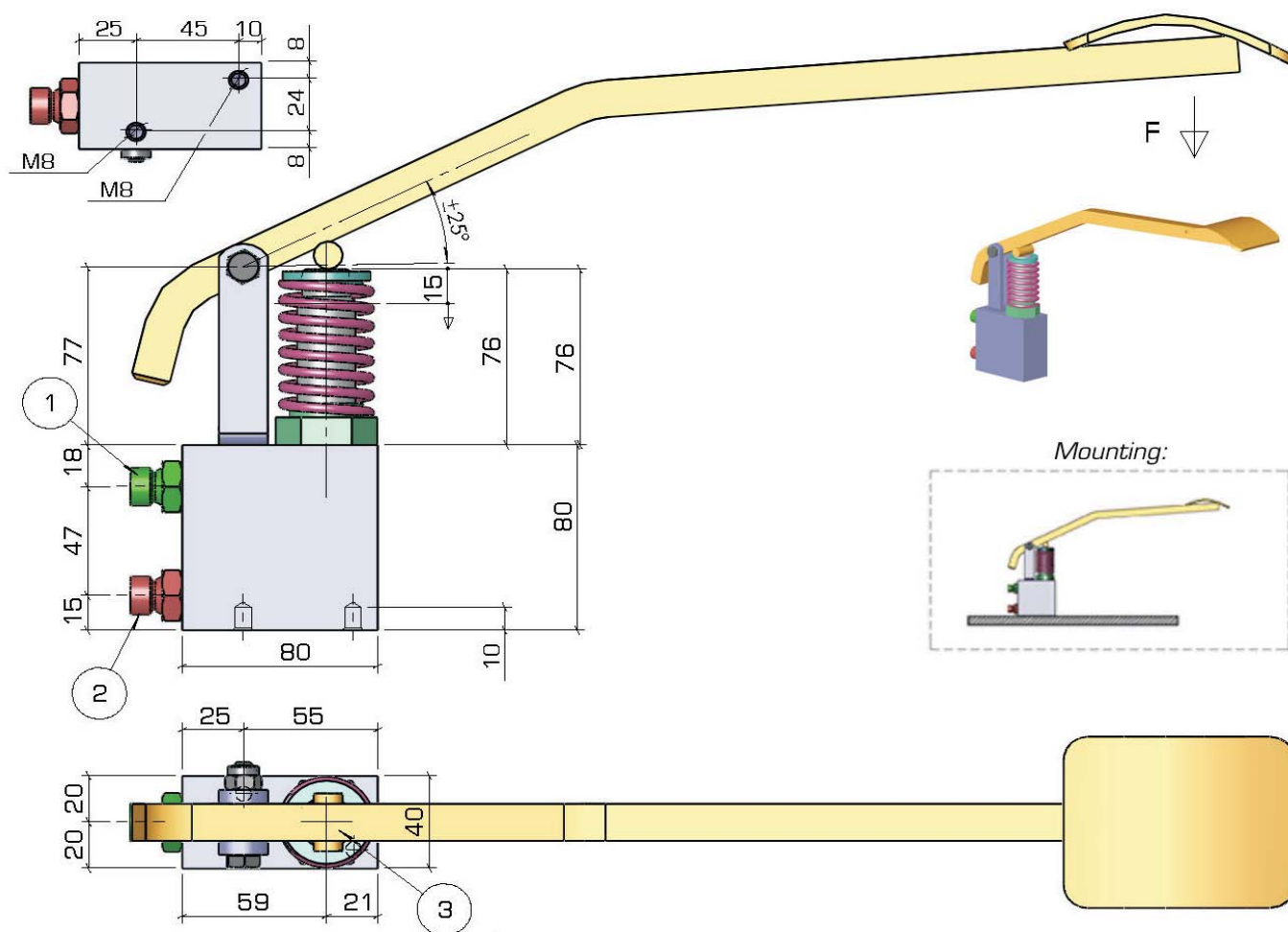
TYPE	DELIVERY cc	PRESSURE Bar
GLAPN16	3,2	250
GLAPN20	5	160
GLAPN25	7,5	100



Dimensions and characteristics not binding. Modifications reserved without prior notice.

Hydraulic Pedal Pump Type GL 100 P

Single acting function pedal pump for single acting cylinder

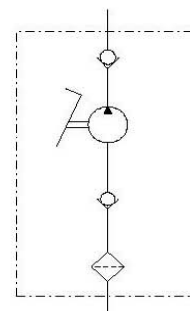
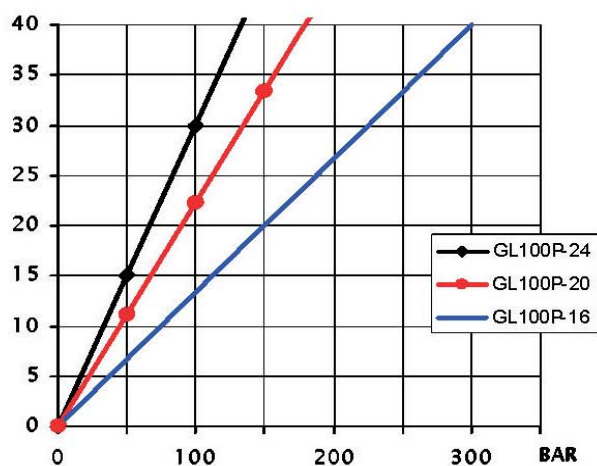


Weight kg. 2,5

1 Pressure Port 3/8"G
2 Suction 3/8"G

TYPE	DELIVERY cc
GL100P/16	3,2
GL100P/20	5
GL100P/24	7,5

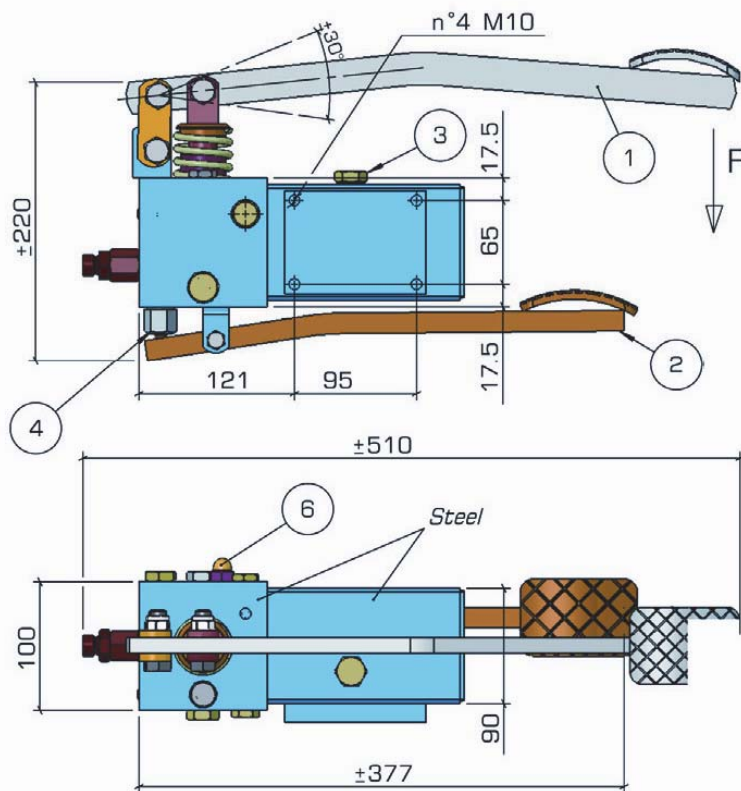
F Kg. With 500mm Lever



Dimensions and characteristics not binding. Modifications reserved without prior notice.

Hydraulic Pedal Pump Type GL 115 MP-P

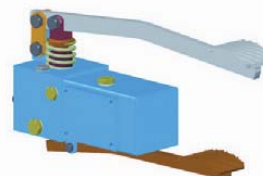
Two speed single acting function pedal pump for single acting cylinder



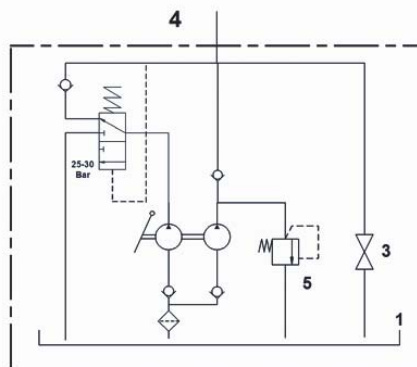
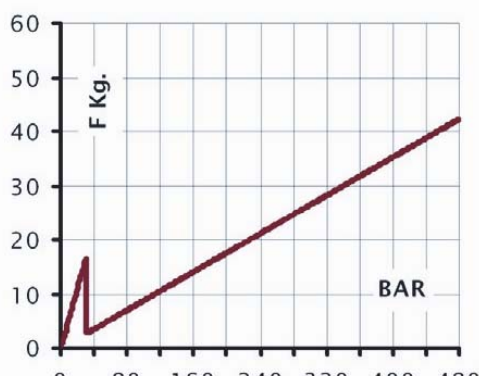
Weight Kg. ~13
Pressure Bar 420
Oil Tank ~1L

- 1 Action foot pedal
- 2 Discharge lever
- 3 Filler Plug (3/8"G)
- 4 Release Valve
- 5 Pressure port 90° connection
- 6 Max. Pressure Valve

Mounting:



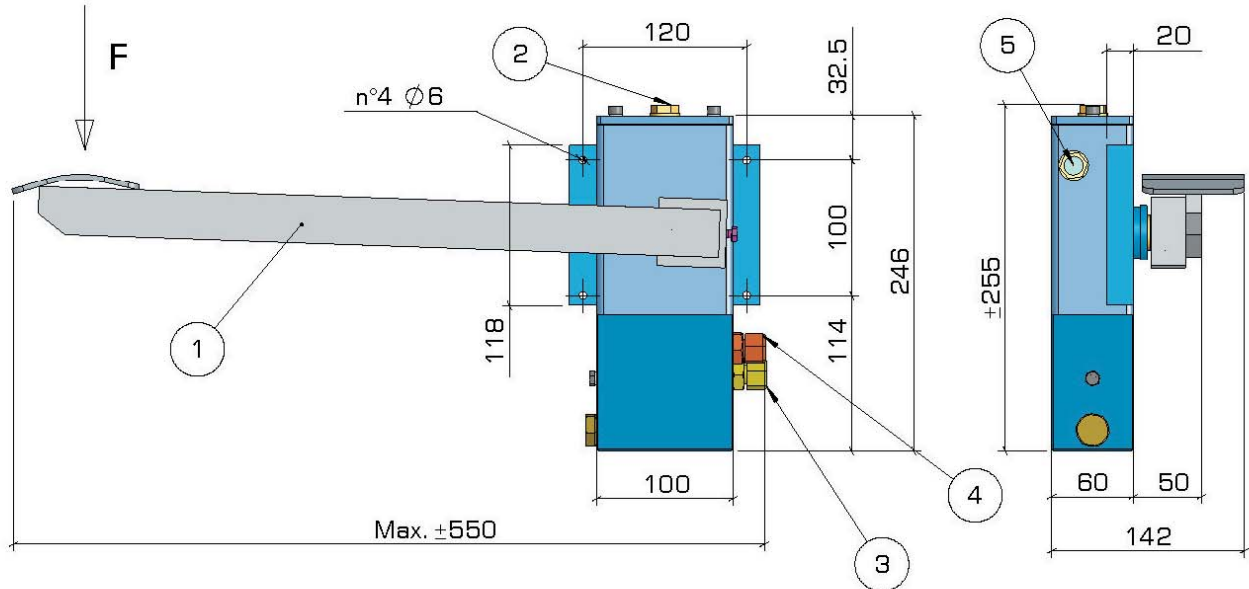
Function	DELIVERY cc	PRESSURE Bar
1° Speed	18.2	30
2° Speed	2.9	420



Dimensions and characteristics not binding. Modifications reserved without prior notice.

Hydraulic Pedal Pump Type GL 138 P

Single acting function pedal pump for single acting cylinder

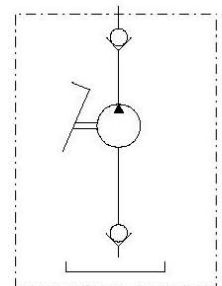
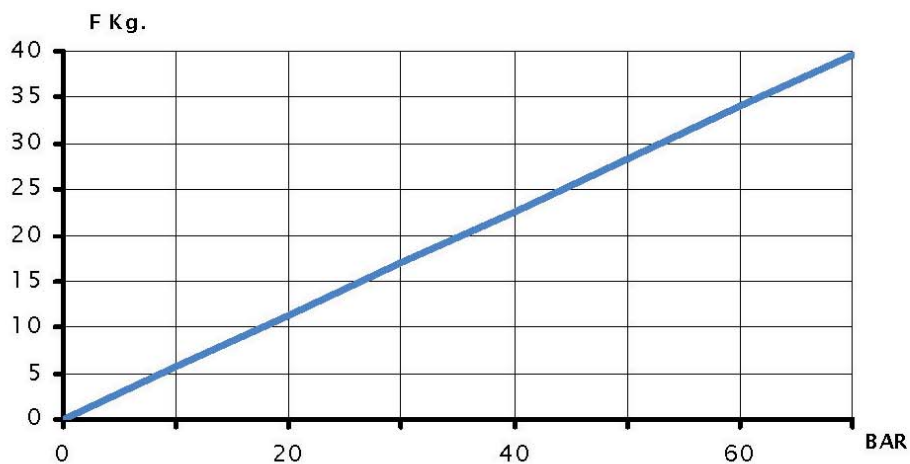
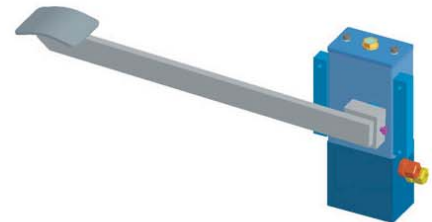


Pressure 60 bar
Delivery 17cc.
Tank 0,5 lt.

- 1 Foot Pedal
- 2 Filler Plug
- 3 Pressure port
- 4 Suction
- 5 Oil Level

Mounting:

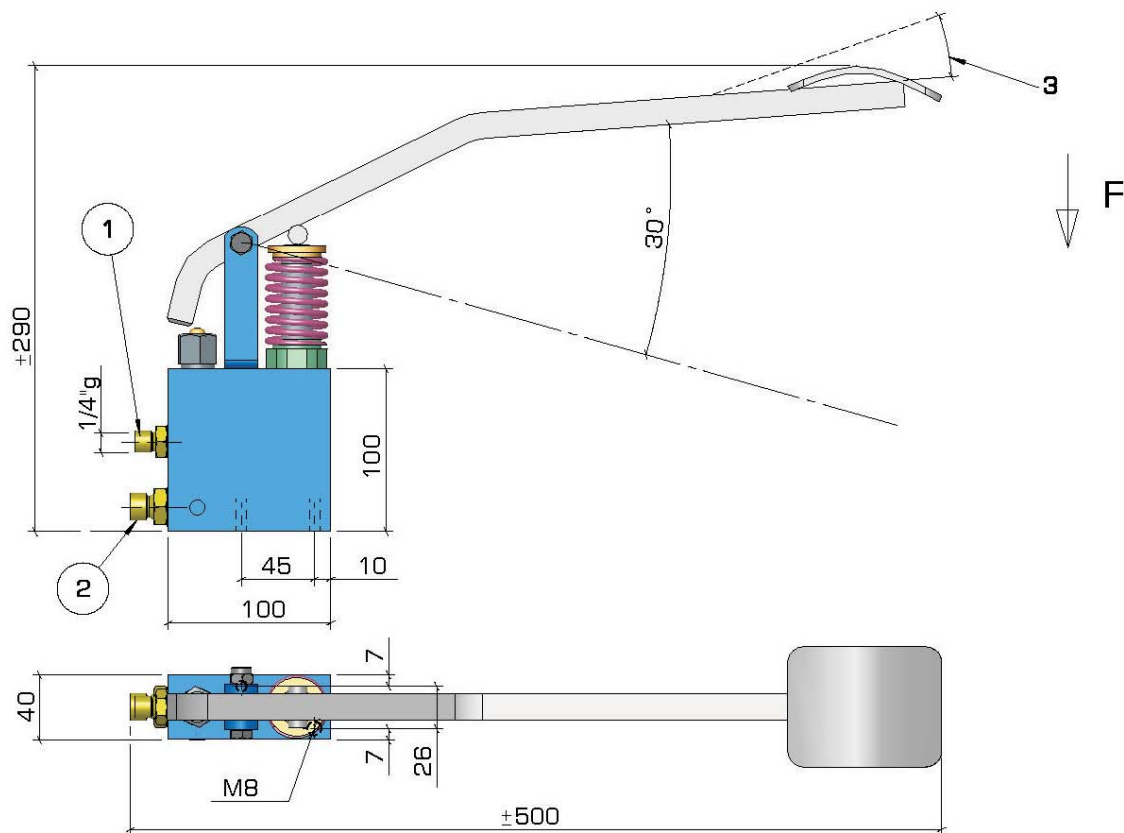
Only as dwg



Dimensions and characteristics not binding. Modifications reserved without prior notice.

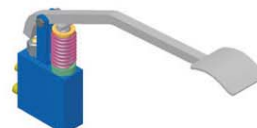
Hydraulic Pedal Pump Type GL 144 P

Single acting function pedal pump with release function for single acting cylinder



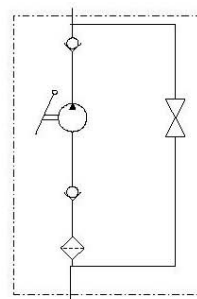
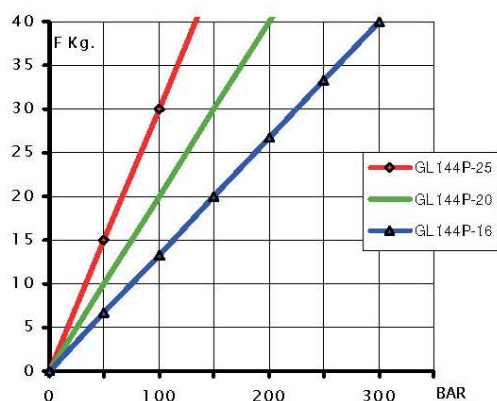
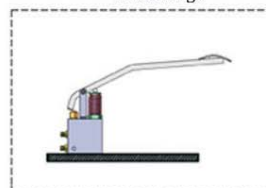
Weight kg. 3,5

- 1 Pressure Port
- 2 Suction
- 3 Release Field



TIPO - TYPE	PORTATA cc DELIVERY cc	PRESSIONE Bar PRESSURE Bar
GL 144P/16	3,6	250
GL 144P/20	5,6	160
GL 144P/24	8,1	100

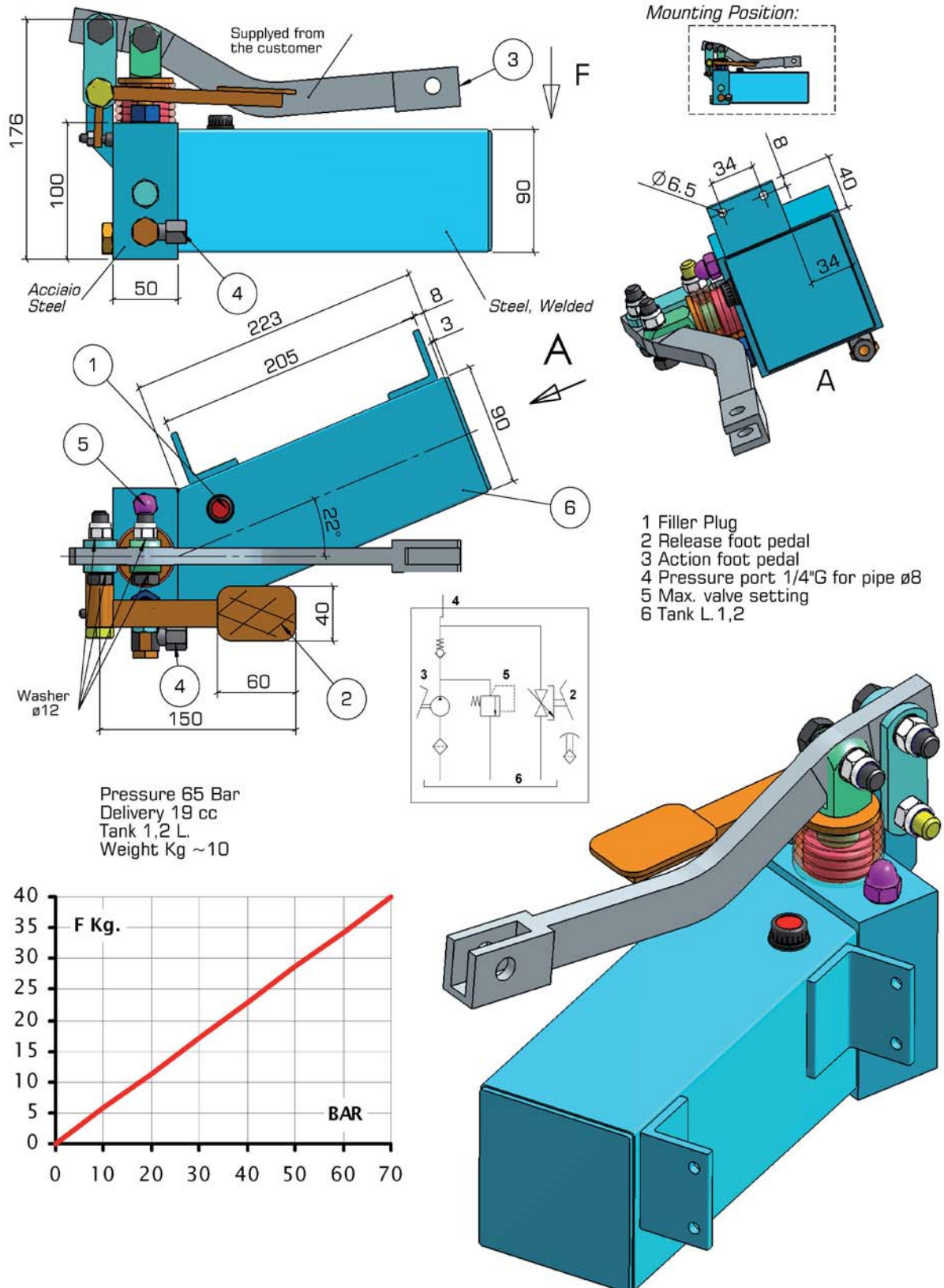
Mounting:



Dimensions and characteristics not binding. Modifications reserved without prior notice.

Hydraulic Pedal Pump Type GL 219

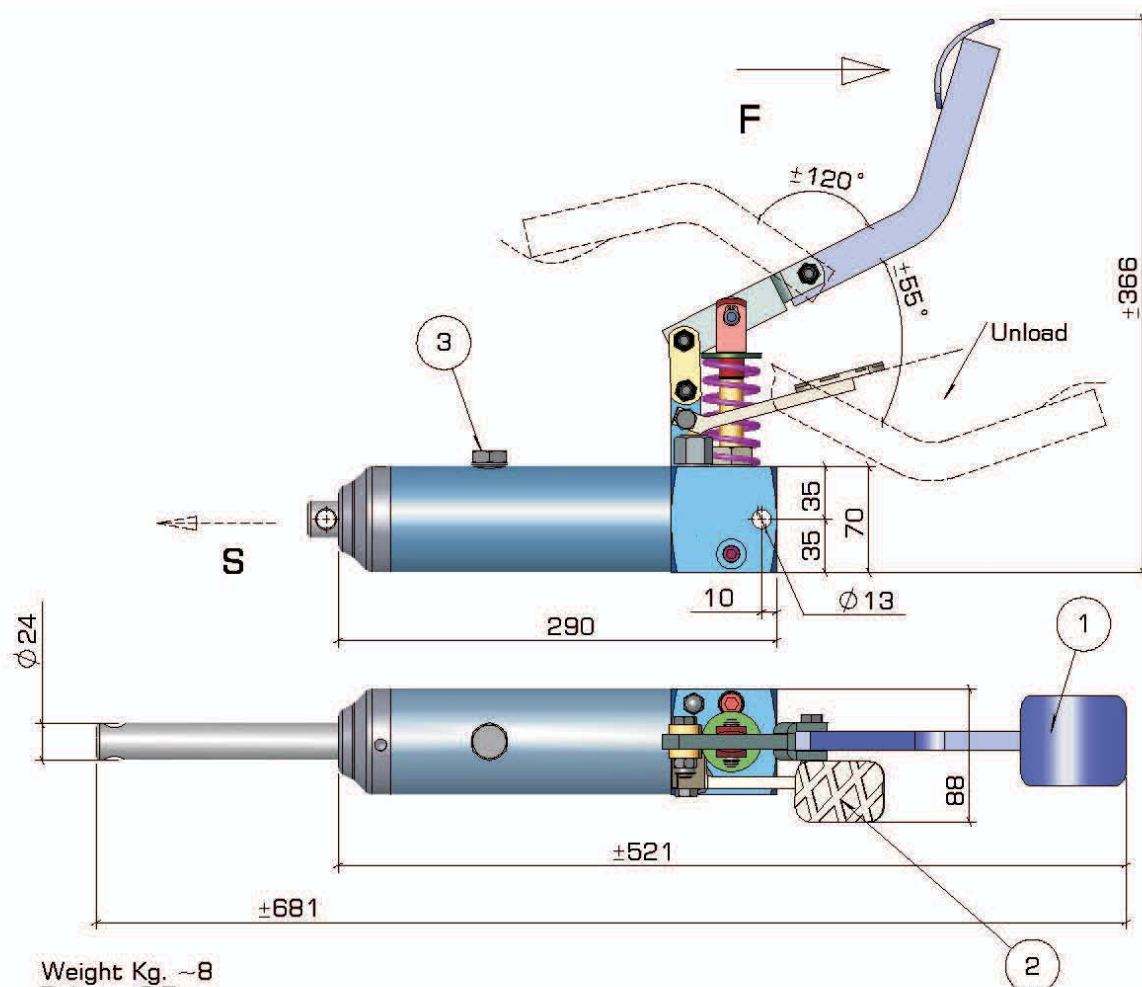
Single acting function pedal pump with relief valve and release foot pedal for single acting cylinder



Dimensions and characteristics not binding. Modifications reserved without prior notice.

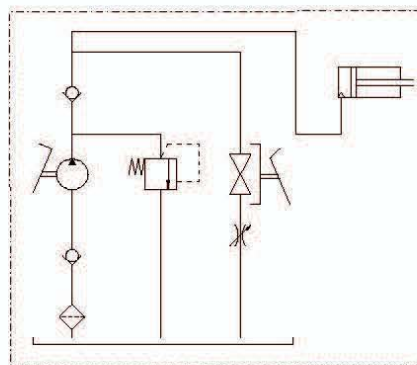
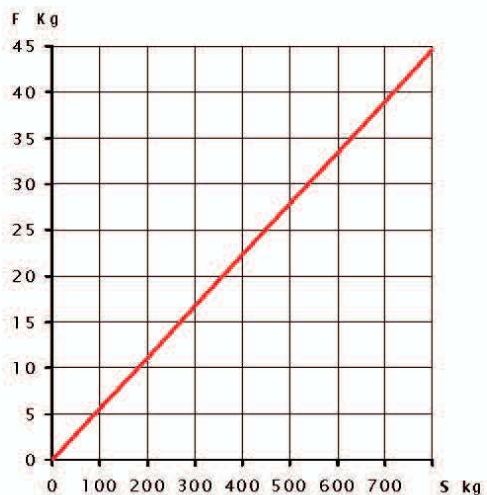
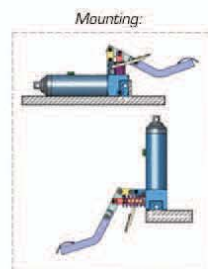
Hydraulic Pump Type GL 224

Single acting function pedal pump with built-in single acting cylinder



Weight Kg. ~8
Delivery 6,5 cc
Pressure 150 Bar
Stroke 150mm
Force ~700Kg

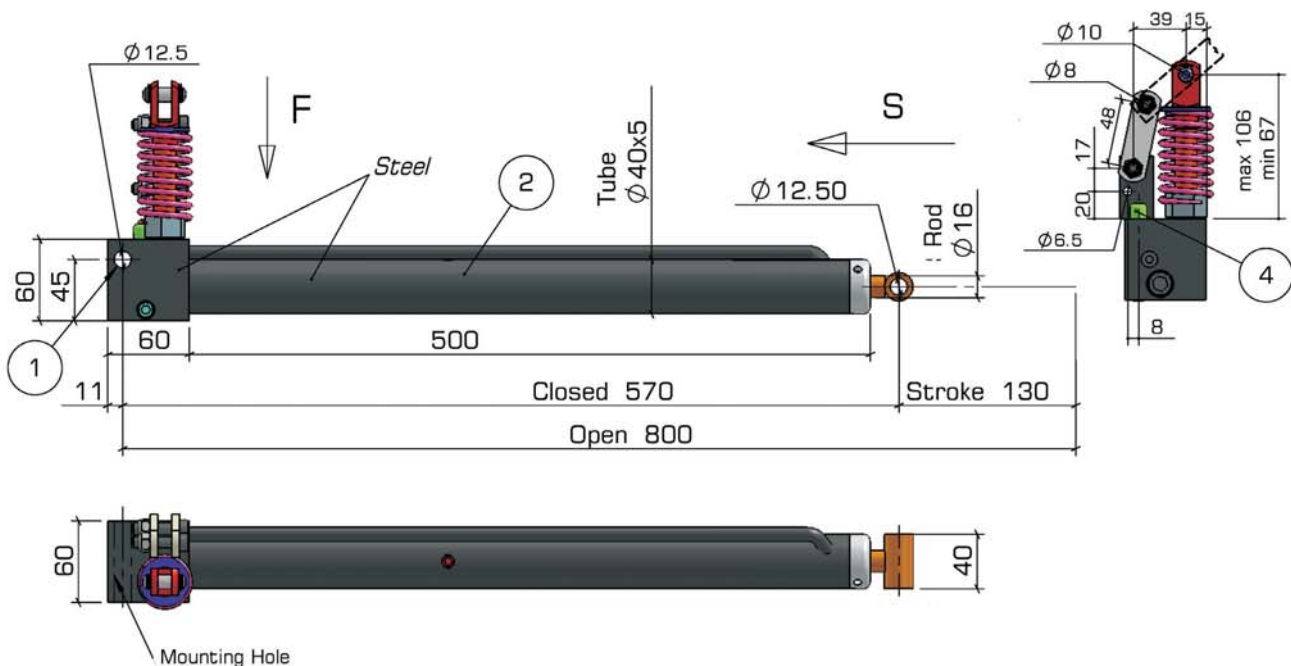
- 1 Foot Pedal
- 2 Unload Foot Pedal
- 3 Filler Plug
- 4 Mounting hole



Dimensions and characteristics not binding. Modifications reserved without prior notice.

Hydraulic Pump Type GL 239

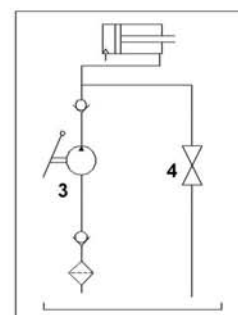
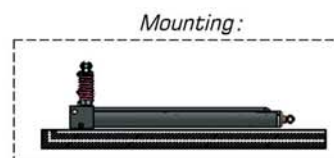
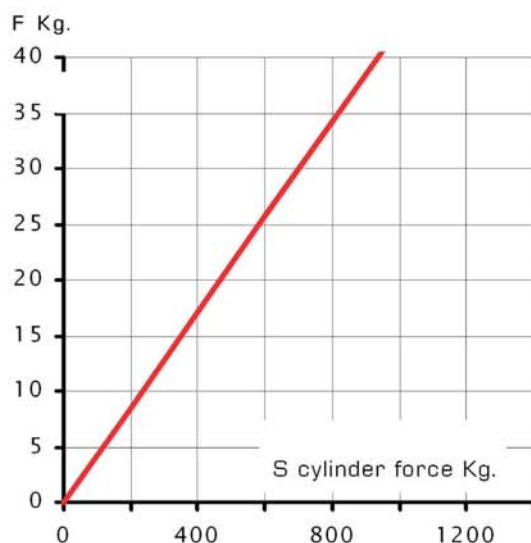
Foot Pedal Single acting function pump with built-in single acting cylinder



Weight Kg. 6
Traction cylinder
Rod stroke per hit: ~10mm
Total N° of hit for complete stroke: 24-25

- 1 Mounting Hole
- 2 Filler Plug (without breath)
- 3 Action Piston *
- 4 Release Pin *

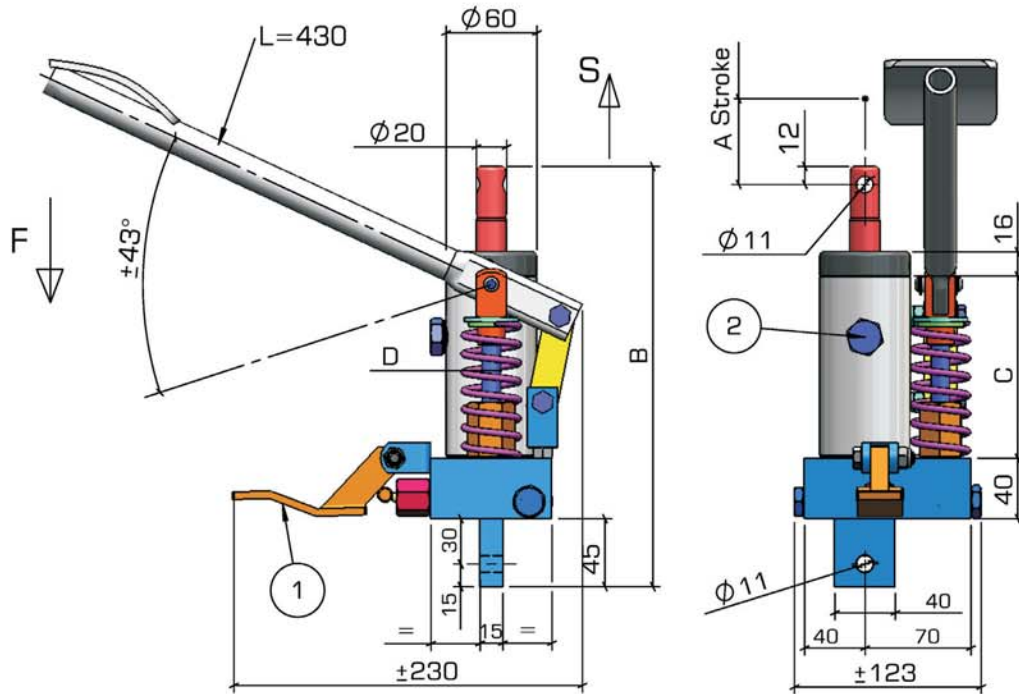
* Action lever and release lever are not supplied.



Dimensions and characteristics not binding. Modifications reserved without prior notice.

Hydraulic Pump Type GL 267

Single acting function pedal pump with built-in single acting cylinder

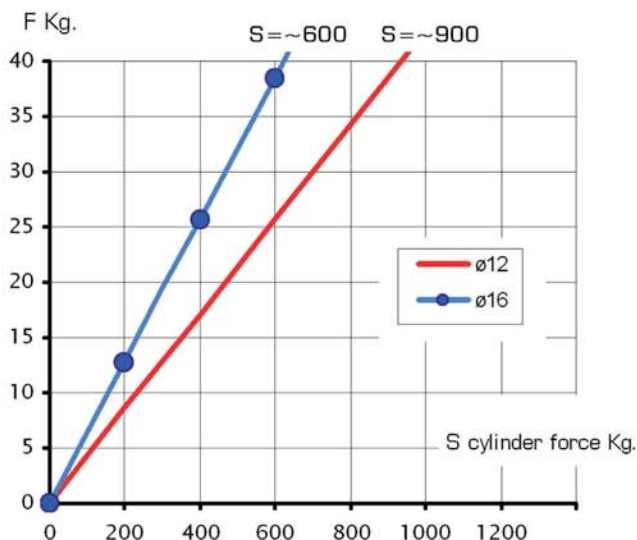


Piston $\varnothing 12$:
Rod-Stroke per pumping Action mm12
S max= ~ 900Kg

Piston $\varnothing 16$ (on request):
Rod-Stroke per pumping Action mm22
S max= ~ 600Kg

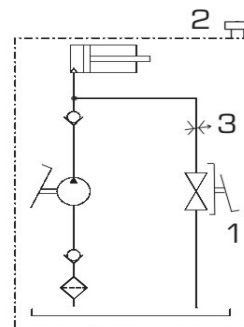
- 1 Release Foot pedal
- 2 Filler Plug
- 3 Return speed setting

Type	A	B	C	D
GL267-130	130	280	128	$\varnothing 12$
GL267-16-130	130	280	128	$\varnothing 16$



Mounting:

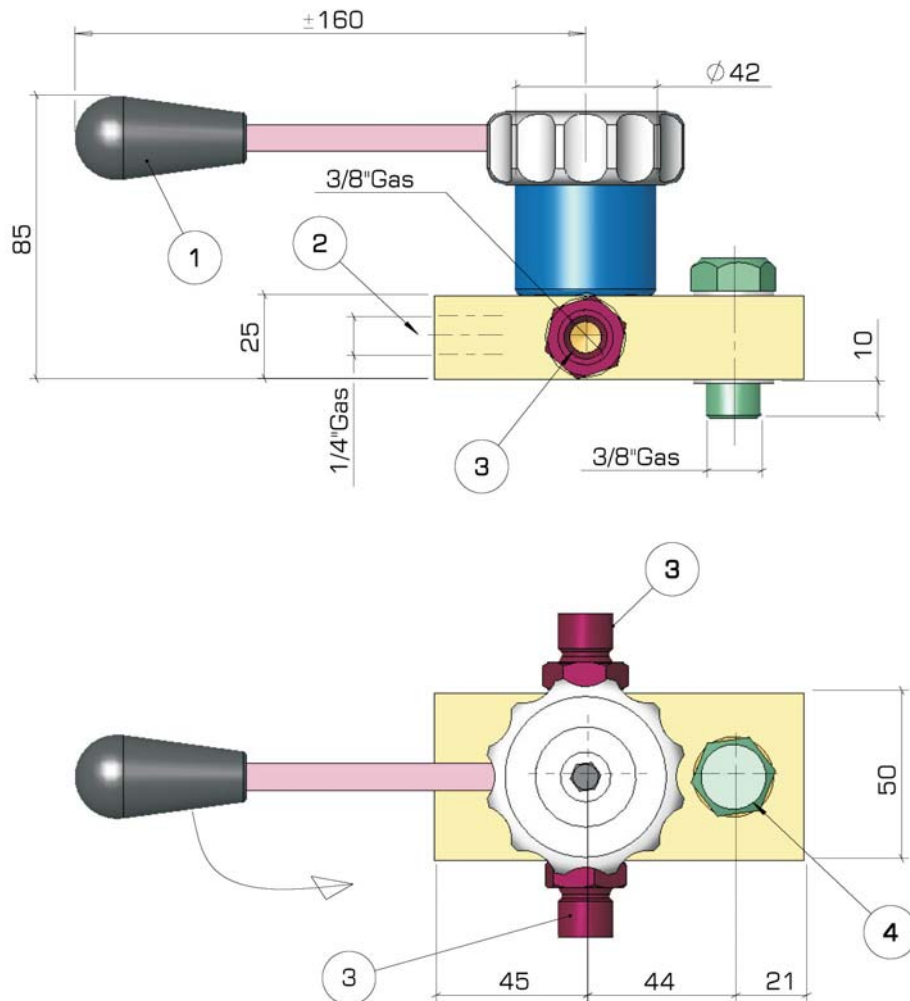
Only as dwg
(Cyl. rod up)



Dimensions and characteristics not binding. Modifications reserved without prior notice.

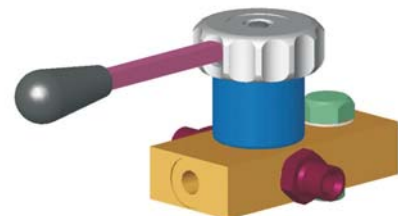
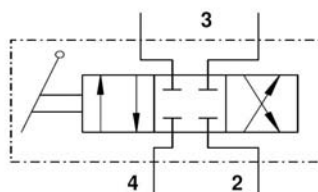
Accessories

Four Way Diverter Valve Type GL4VN



Weight Kg. ~1,7

- 1 Flow Diverter Lever
- 2 Oil Discharge
- 3 Pressure Port
- 4 Oil Inlet

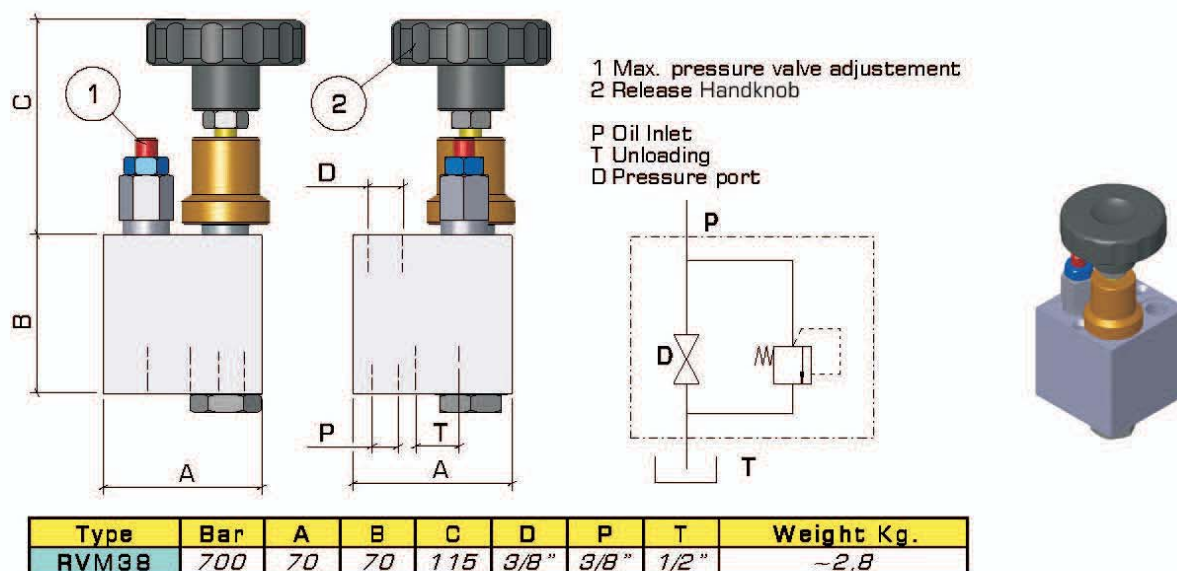


4-Way-diverter valve for the control of double acting cylinders;
with modifications also available for nearly all other pump models.

Dimensions and characteristics not binding. Modifications reserved without prior notice.

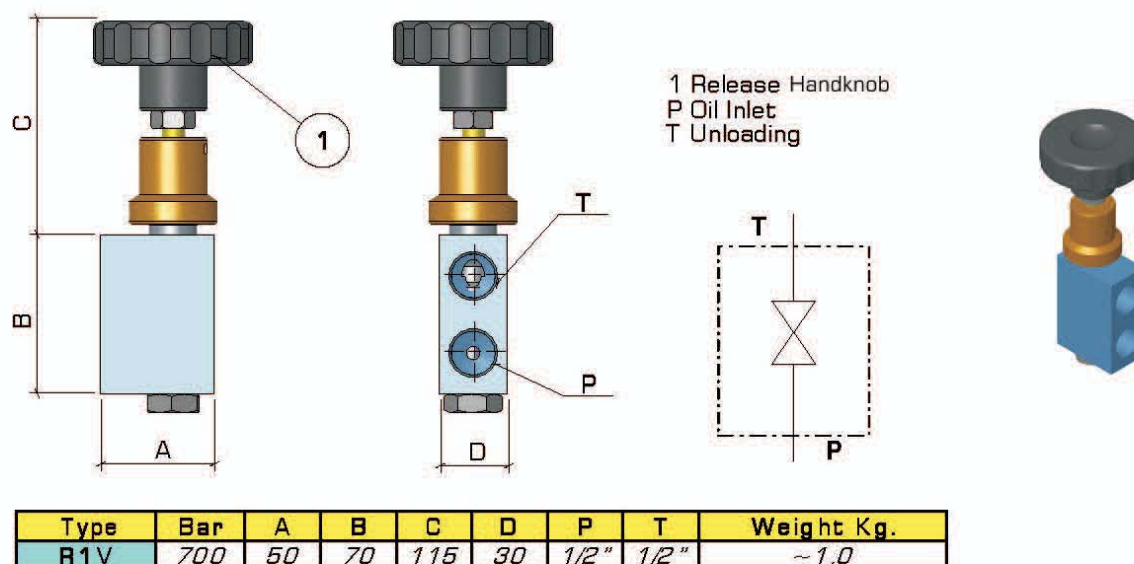
Accessories

Relief+Throttle Valve Type RVM



APPLICATIONS: Thanks to the reduced dimensions, this valve is specially suitable for installation on power-packs.
FEATURES: Made in steel; easy installation; machining on most advanced facilities; easy maintenance. Combination of ball valve series "R1V" and relief valve series "VMP" maintaining the same characteristics of those.

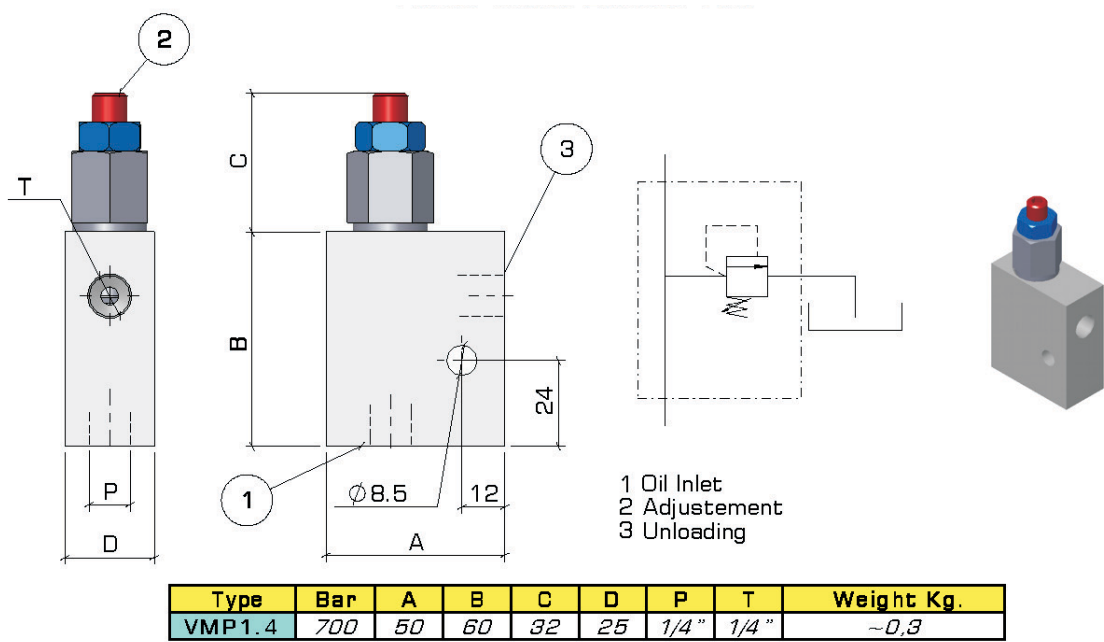
Needle Valve Type R1V



APPLICATIONS: in hydraulic circuit with necessity of rapid pressure unloading by connecting the pressure line to the tank during passages from one operation to another, or to shut down or feed in rapidly oil into the circuit.
FEATURES: Made in steel by using most advanced manufacturing facilities; easy to maintenance; corrosion proof; perfectly closing without any drain at any pressure.

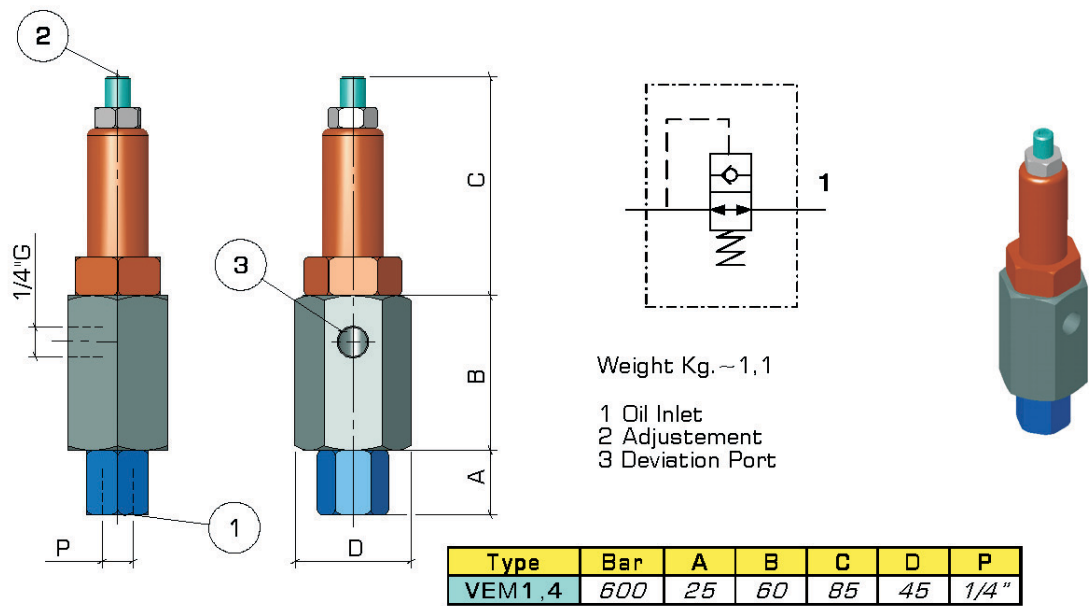
Dimensions and characteristics not binding. Modifications reserved without prior notice.

Accessories
Pressure Relief Valve Type VMP



APPLICATIONS: The VMP valves avoid that peak-pressures can damage components of the hydraulic circuit (pumps, motors, gauges, etc.).
FEATURES: Made in aluminium by using most advanced manufacturing facilities; easy maintenance; corrosion proof; adjustable for pressures between 5 and 700 Bar by acting on the setting spring.

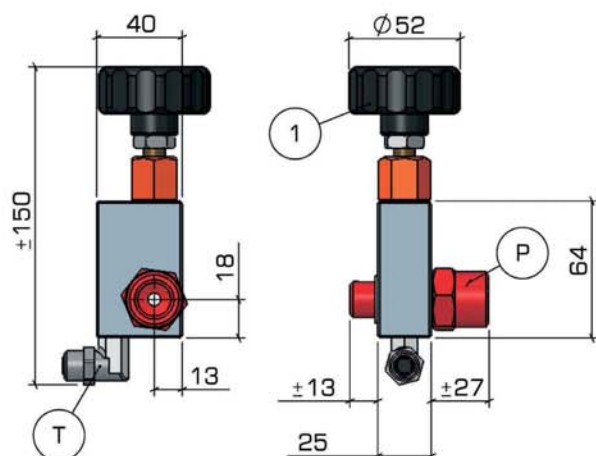
Exclusion Valve Type VEM



APPLICATIONS: used in circuits which need the exclusion by means of interception of the oil-flow to specific components.
FEATURES: made in steel by using most advanced manufacturing facilities; easy maintenance; no pressure drop. Setting of pressure is obtained by acting on the setting spring which, by means of a piston, commands a ball which excludes the oil-flow. In order to assure good function, it is essential that the oil is without contamination.

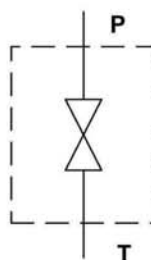
Dimensions and characteristics not binding. Modifications reserved without prior notice.

Accessories Needle Valve Type D



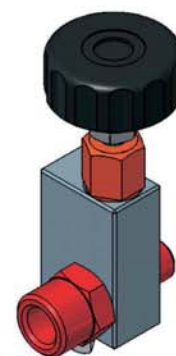
Weight Kg. ~0,5

1 Release Handknob
T Tank Port for pipe ø8
P Oil Inlet (1/2" or 3/8")



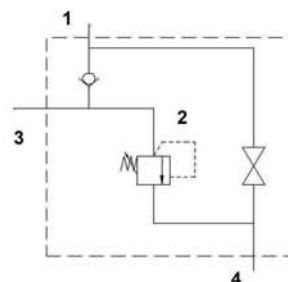
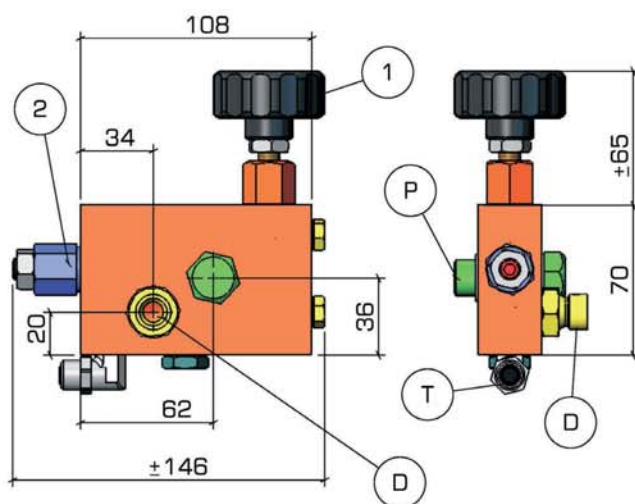
Mounting:

Any Position.



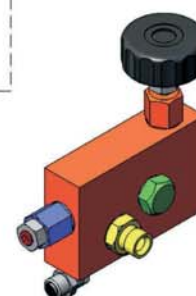
APPLICATIONS: in hydraulic circuit with necessity of rapid pressure unloading by connecting the pressure line to the tank. Available on pumps type GL.
FEATURES: Made in aluminium by using most advanced manufacturing facilities; easy to maintenance; corrosion proof.

Relief+Needle Valve Type DV



Weight Kg. ~1,1

1 Release Handknob
2 Max. Pressure Valve
D Pressure Port 3/8" g
P Inlet (1/2" or 3/8")
T Unloading port for pipe ø8



Coupling with GL pumps			
Cod.	A	GL20-35	GL40-45
Gruppo DV3-8G	3/8" G	*	
Gruppo DV1-2G	1/2" G		*

Mounting:

Any Position.

APPLICATIONS: in hydraulic circuit with necessity of rapid pressure unloading by connecting the pressure line to the tank and max. pressure setting. Available on pumps type GL.
FEATURES: Made in aluminium by using most advanced manufacturing facilities; easy to maintenance; corrosion proof.

Dimensions and characteristics not binding. Modifications reserved without prior notice.

As HANSA-TMP has a very extensive range of products and some products have a variety of applications, the information supplied may often only apply to specific situations. If the catalogue does not supply all the information required, please contact HANSA-TMP.

In order to provide a comprehensive reply to queries we may require specific data regarding the proposed application.

Whilst every reasonable endeavour has been made to ensure accuracy this publication cannot be considered to represent part of any contract, whether expressed or implied.

HANSA-TMP reserves the right to amend specifications at their discretion.



Dutch Hydraulic Consultants BV	Tel. : +31-(0)6-83695868
Achterweg ZZ 8	Mail : info@dhc-hydraulic.nl
3216 AB Abbenbroek	Web : www.dhc-hydraulic.nl
Nederland	