



## Hydraulic Hand Pumps - Foot Pedal Pumps

## Air-Hydraulic Pumps - Accessories



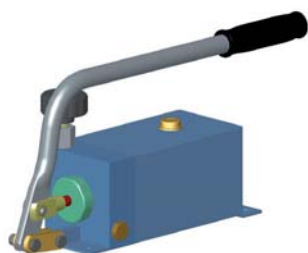
**GL**



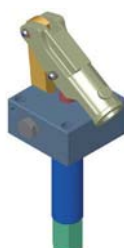
**GLA**



**GL2 CN**



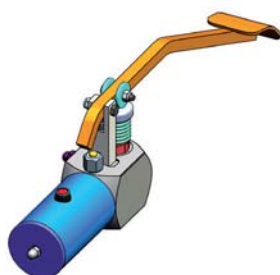
**GLDE**



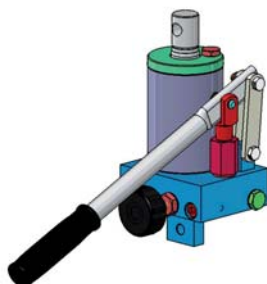
**GL 277**



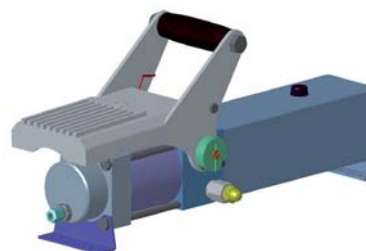
**GL2P/Q**



**GLAPN**



**GTE**



**GLOP**

## Hydraulic Hand Pumps

This catalogue is published by:

Issue n° **HT 20 / A / 309 / 0912 / E** (Replaces all previous edition)

COPYING AND TRASLATION. EVEN OF EXTRACTS, ONLY WITH PRIOR WRITTEN PERMISSION OF THE PUBLISHER. ALL RIGHTS RESERVED. SUBJECT TO REVISION.

The specific data are for product description purposes only and must not be interpreted as warranted characteristics in legal sense.

Protection: external protection is generally with painting RAL 5015 (Blue), on liquid base for models with tank, while epoxy powder for models with cast iron housing.

Aluminium parts are anodized

Lever parts and others is partially zinc-coated.

Special protection are possible on request.

ASSEMBLY, COMMISSIONING AND MAINTENANCE OF THE PRODUCTS DESCRIBED IN THIS CATALOGUE:

**SEE HANDBOOK**

The main performance curves and the specifications shown in this catalogue are obtained by using mineral based fluid ISO VG 46, with cleanliness class of 17/15/12 ISO 4406 (Class 7 NAS 1638) at a temperature of 50°C.

### HYDRAULIC FLUIDS:

General properties:

The fluid must have physical lubricating and chemical properties suitable for use in hydraulic systems, such as, for example:

MINERAL OIL BASED HYDRAULIC FLUIDS HL (DIN 51524 part 1)

MINERAL OIL BASED HYDRAULIC FLUIDS HLP (DIN 51524 part 2)

For use of other fluids, environmentally friendly fluids or fire resistant fluids, please consult our Tech. Dpt.

## Applications



Culvert cover lifter



Airport ground support equipment

Concrete truck mixer



Furniture press

## Applications



Hydraulic starter for marine diesel engine



Special structures for disabled persons

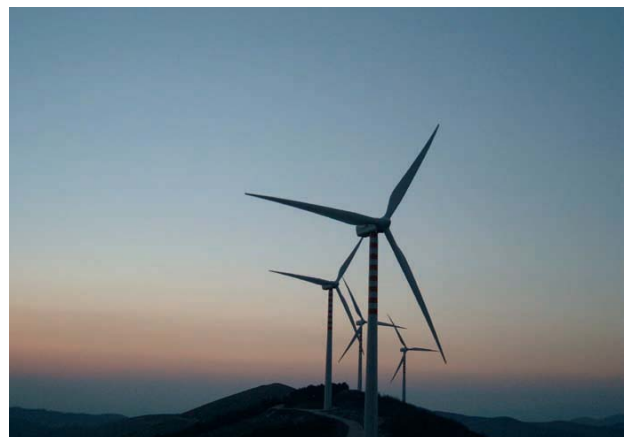
All purpose platform








Aerial platform



Windmill



### Contents

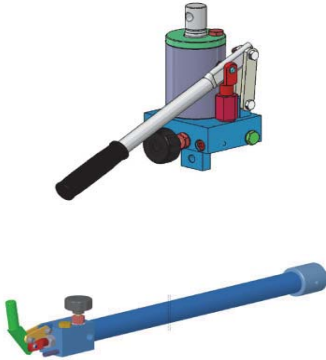


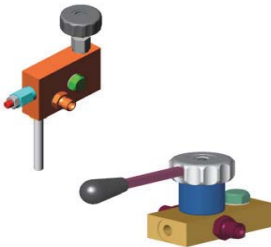
Description	Pump Type	Page
Double acting pumps cast-iron housing without tank		ZIE CATALOGUS HANDPOMPEN
Double acting pumps cast-iron housing with tank		ZIE CATALOGUS HANDPOMPEN
Twin piston double acting cast-iron housing		ZIE CATALOGUS HANDPOMPEN
Double acting pumps steel/aluminium housing without tank		ZIE CATALOGUS HANDPOMPEN
Double acting pumps steel/aluminium housing with tank		ZIE CATALOGUS HANDPOMPEN



### Contents

Description	Pump Type	Page
Single acting pump without tank		ZIE CATALOGUS HANDPOMPEN
Single acting pump with tank		ZIE CATALOGUS HANDPOMPEN
Single-acting multiple piston pumps		ZIE CATALOGUS HANDPOMPEN
Two speed pumps		ZIE CATALOGUS HANDPOMPEN
Foot pedal pumps		ZIE CATALOGUS VOETPOMPEN

**Contents**

Description		Pump Type	Page
Pumps with built-in cylinder		ZIE CATALOGUS CILINDERS MET HANDPOMP	
Jack and Foot			
Air-Hydraulic pumps		GLOP 6-8-10	105
		GLOP 625-725-825	106
Valves and Accessories			

## Air-Hydraulic Pump Type GLOP

### DESCRIPTION AND TECHNICAL DATA OF THE AIR-HYDRAULIC PUMPS

The **GLOP Air-Hydraulic Pumps** are suitable to reach high pressures without any manual force.

Applications are in various fields: pressing, cutting, tightening, bolting, hydraulic testing etc.

The function with pedal, allows the operator to have both the hands free during the operations, offering like this remarkable saving of time and perfect execution of all operations.

The pumps do not require any special maintenance; they are equipped with specially treated steel poppet style valves with a filter on each valve.

In order to avoid any misfunction the hydraulic oil, should be free of any contamination.

The **GLOP 625-725-825 Pumps** have a double co-axial piston system which allows a high oil-flow up to 30 bar and then automatically switches over to low oil-flow to reach very high pressures.

This results in great saving of time in many applications on hydraulic cylinders.

They are equipped with a relief valve which is adjustable from outside.

When reaching the required pressure, they remain under pressure also for long periods, without any damage.

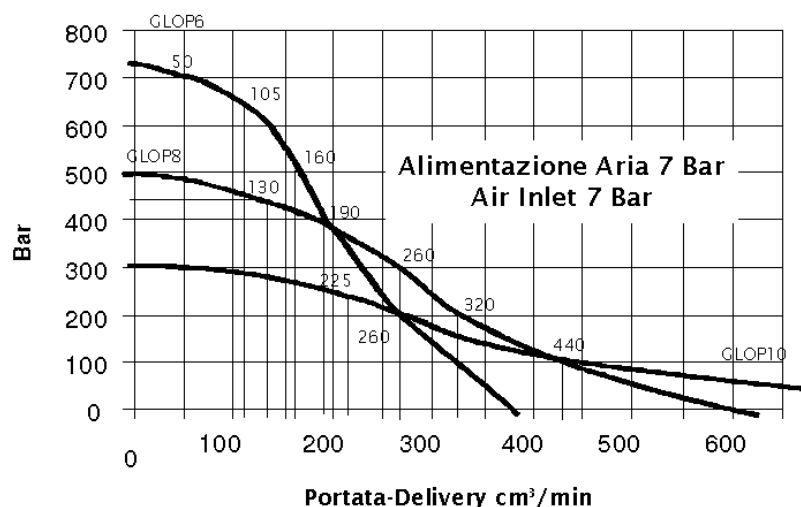
Installation can be in system with air pressure of 3 to 10 bar; it is suggested to put a lubrication filter for the air before connecting the pump, suitable for 400 to 450 NL/min.

The **GLOP 6-8-10 Models** have one single pumping piston.

Due to the relatively low pumping capacity, these pumps are suitable for cylinders of small dimensions.

They are equipped with a relief valve, same as GLOP 625/725/825.

### GLOP 6-8-10 - Pressure / Delivery Diagram

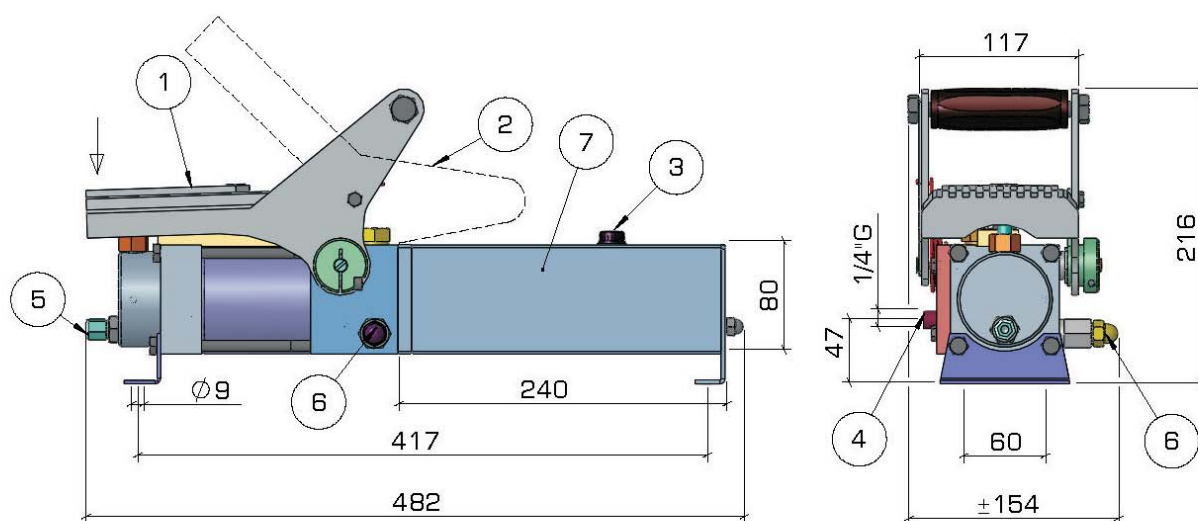


*Dimensions and characteristics not binding. Modifications reserved without prior notice.*



### Pump Type GLOP 6-8-10

Single speed air-hydraulic pump

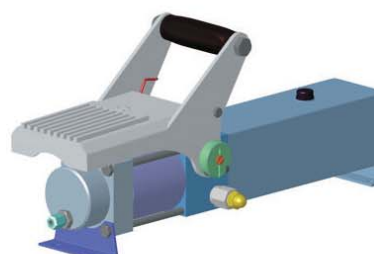
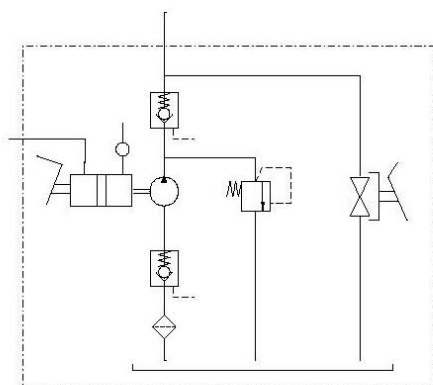
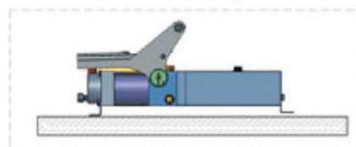


TYPE	DELIVERY CC/min	PRESSURE BAR	AIR CONSUMPTION L/min
GLOP 6	370	700	50
GLOP 8	600	500	46
GLOP 10	900	300	43

Weight (with oil) Kg. ~9

- 1 Pump Operation
- 2 Oil Discharge
- 3 Filler Plug
- 4 Pressure Port
- 5 Air Inlet
- 6 Max. Pressure Setting
- 7 Tank L. 1,3

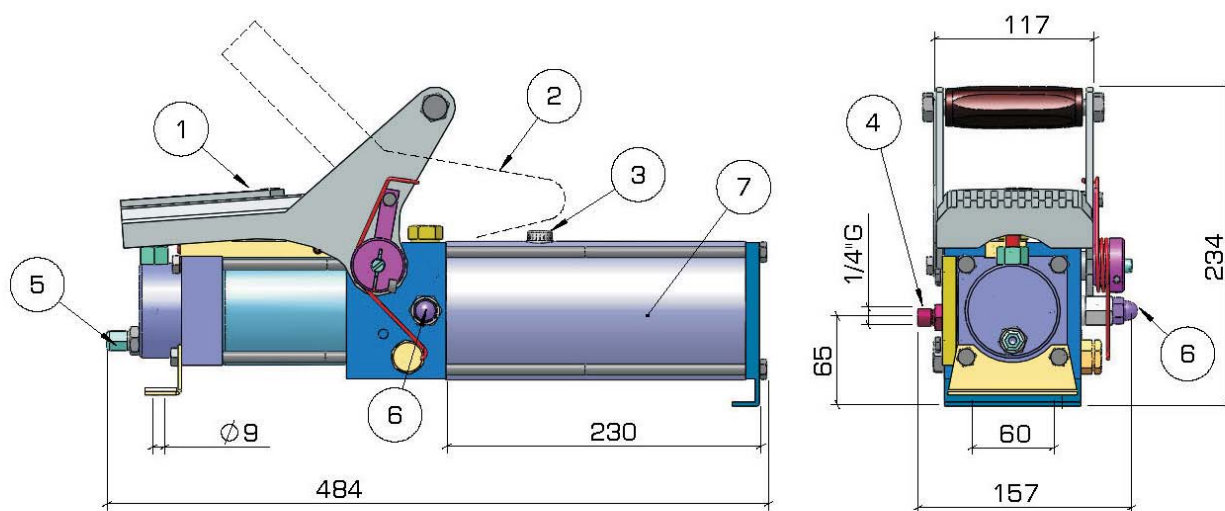
Mounting:



Dimensions and characteristics not binding. Modifications reserved without prior notice.

### Pump Type GLOP 625-725-825

Twin speed air-hydraulic pump

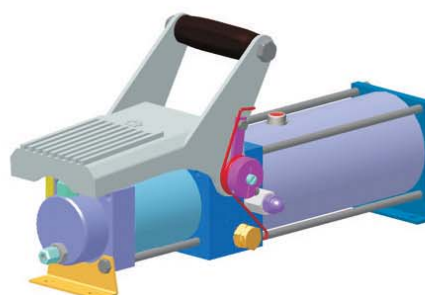
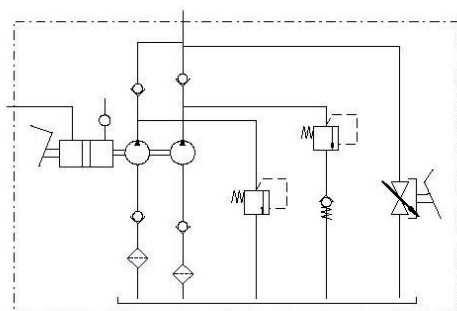
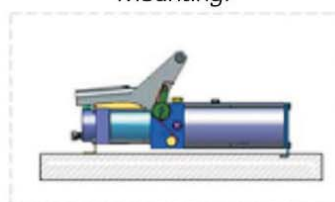


TYPE	PRESSURE PORT CC/min				Pressure	Air Consumption L/min
	0 Bar oil	10 Bar oil	20 Bar oil	30 Bar oil	Air 10 Bar	
GLOP 625	6000	5000	4000	3000	750 Bar	43
GLOP 725	6000	5000	4000	3000	700 Bar	43
GLOP 825	6000	5000	4000	3000	600 Bar	43

Weight (with oil) Kg. ~14,3

- 1 Pump Operation
- 2 Oil Discharge
- 3 Filler Plug
- 4 Pressure Port
- 5 Air Inlet
- 6 Max. Pressure Setting
- 7 Tank L. 1,2

Mounting:

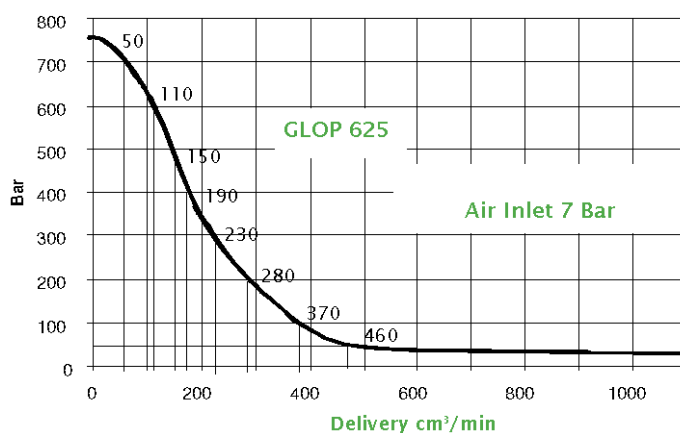


*Dimensions and characteristics not binding. Modifications reserved without prior notice.*

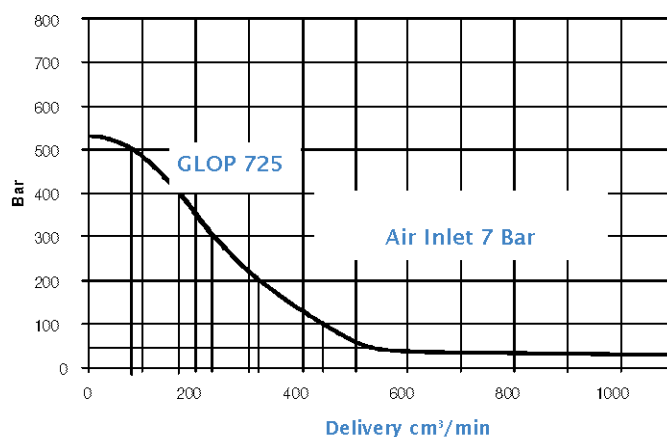
## Pump Type GLOP 625-725-825

Twin speed air-hydraulic pump

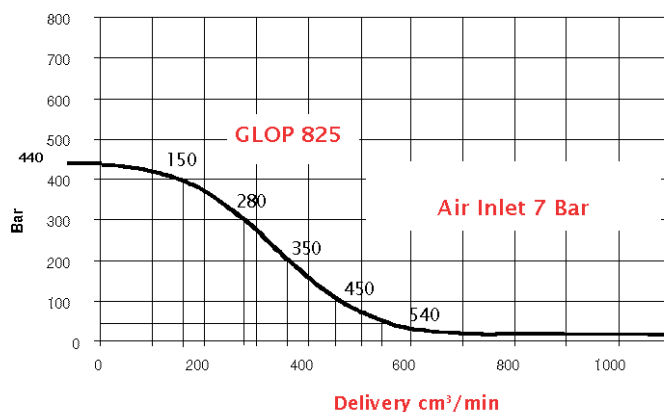
GLOP 625 - Pressure / Delivery Diagram



GLOP 725 - Pressure / Delivery Diagram



GLOP 825 - Pressure / Delivery Diagram



Dimensions and characteristics not binding. Modifications reserved without prior notice.

As HANSA-TMP has a very extensive range of products and some products have a variety of applications, the information supplied may often only apply to specific situations. If the catalogue does not supply all the information required, please contact HANSA-TMP.

In order to provide a comprehensive reply to queries we may require specific data regarding the proposed application.

Whilst every reasonable endeavour has been made to ensure accuracy this publication cannot be considered to represent part of any contract, whether expressed or implied.

HANSA-TMP reserves the right to amend specifications at their discretion.



---

---

Dutch Hydraulic Consultants BV	Tel. : +31-(0)6-83695868
Achterweg ZZ 8	Mail : <a href="mailto:info@dhc-hydraulic.nl">info@dhc-hydraulic.nl</a>
3216 AB Abbenbroek	Web : <a href="http://www.dhc-hydraulic.nl">www.dhc-hydraulic.nl</a>
Nederland	