



## Hydraulic, Electro-Hydraulic and Special Rotary Couplings



**CONTENTS**

<b>General Information .....</b>	<b>4 - 5</b>
<b>Hydraulic Rotary Couplings DA Series</b>	
DA 045 - DA 060 .....	8
DA 085 .....	9
DA 100 .....	10
<b>Hydraulic Rotary Couplings DI Series</b>	
DI 085 L .....	12
DI 085 V .....	13
DI 092 .....	14
DI 100 .....	15
DI 100 V .....	16
DI 125 .....	17
DI 145 .....	18
<b>Hydraulic Rotary Couplings for Concrete Mixer Pump DPC Series</b>	
DPC 190 .....	20
<b>Mini Hydraulic Rotary Couplings DM Series</b>	
DM 070 .....	22
<b>Electric Rotary Couplings CE Series</b>	
General Information .....	24 - 25
CE 110 .....	26 - 27
CE 163 .....	28 - 29
<b>Special Rotary Couplings</b>	
GRS 25 - 85 / 6 .....	32
GRS 85 - 114 / 10 .....	33
GRS 114 / 10 - 114 / 19 .....	34
GRS 114 / 18 - 114 / 24 .....	35
GRT 60 - 114 .....	36
GRR 50 / 1 - 50 / 6 .....	37
Rotary Coupling for Excavator .....	38
Special Rotary Coupling for Machine Tools .....	38
Rotary Coupling for Pipe-Laying Machine .....	39
Special Rotary Coupling for Oil Rig .....	39
Special Rotary Coupling for Off-Shore Applications with Ball Swiwels 4" .....	40
Straight Hydraulic Rotary Coupling for Off-Shore Applications .....	40

## General Information

### Products

In almost all branches of industry rotary unions are needed for transmitting mediums between stationary and rotating machinery parts, whereby every application has different requirements. We have developed an extensive selection of various models for agricultural, industrial and concrete pump application and special products for Pipe-Laying Machine and Off-Shore applications.

Fundamental characteristics of each Rotary Coupling are the use of high quality material and components, the painstaking grade of production and a complete technical service package both pre and post sale. A wide range of products that can work with operating pressures of up to 42 MPa (420 Bar), multi-passage swivel joints, combined solutions with several types of fluids and complete with electrical applications suited for any type of use.

### Features

- Rated pressure up to 42 MPa (420 Bar)
- Rotation speed 0-12 n/min.
- Temperature range: -20 / +90 °C
- Recommended location: along the vertical axis
- No radial or axial force is permitted on the rotary joint
- Hydraulic ports are closed with polyethylene caps
- Large number of product varieties available
- Customer specific designs, even for high-demanding uses
- Combinations of various mediums and electrical currents
- The most modern materials and manufacturing processes guarantee the highest quality

### Optionals

- Fitted with electric rotating collector of our production and / or encoder
- Painting
- Chemical nickel treatment, or construction in stainless steel for marine applications

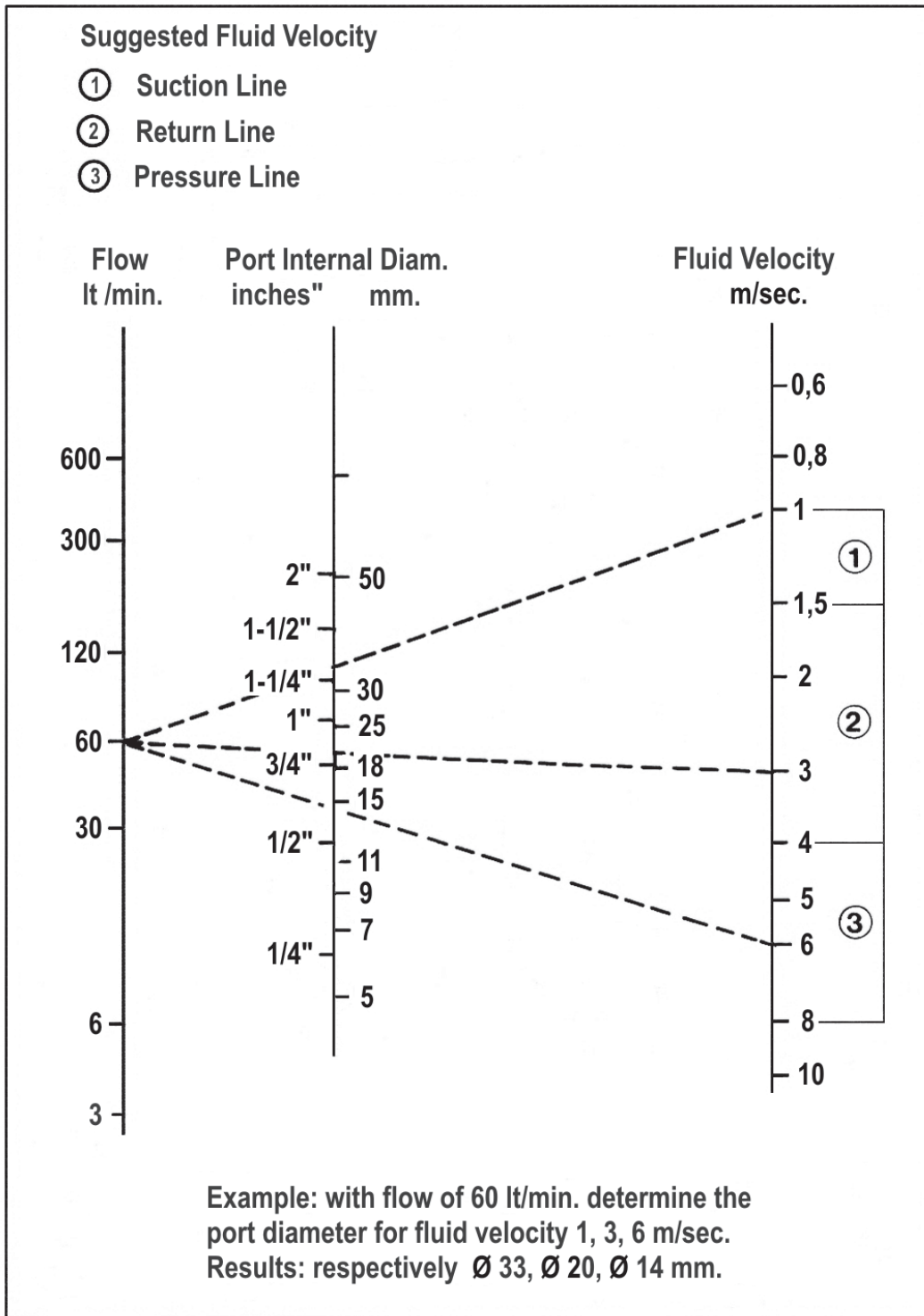
### Applications

- Agricultural Machinery
- Earth Moving Machines
- Crane Trucks and Hoisting
- Aerial Platform
- Marine and Off-Shore Cranes
- Boring and Drilling Machines
- Demolition and Recycling Machinery
- Truck Mounted Concrete Mixer Pump
- Industrial Machinery

**General Information**

**Fluid Velocity**

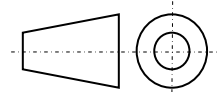
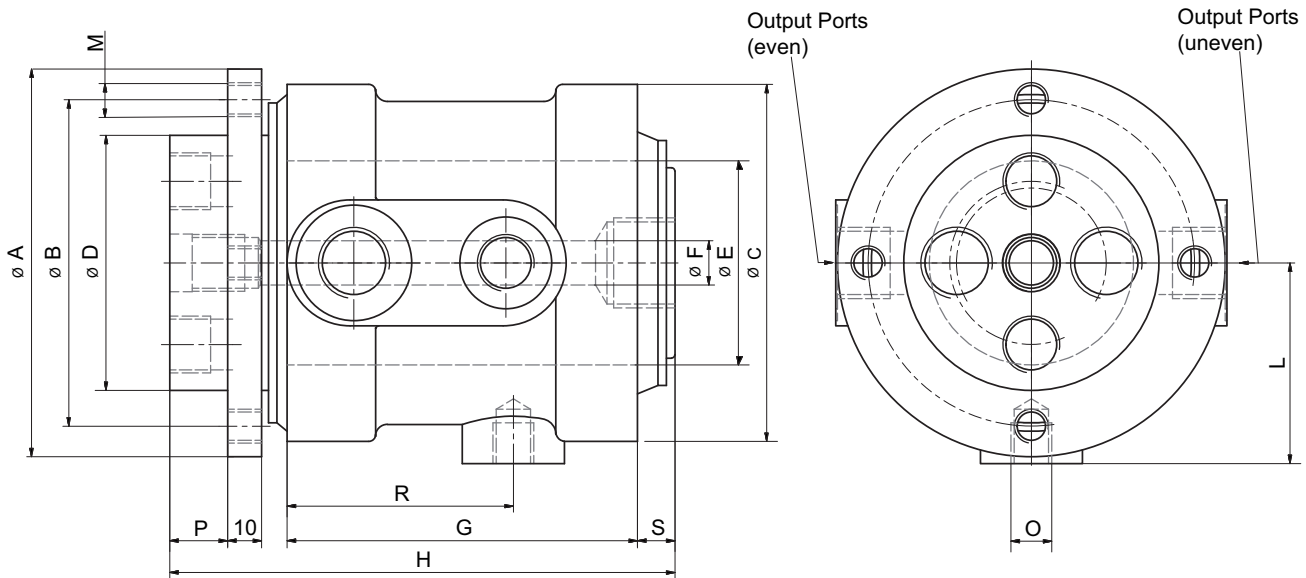
As the Rotary Couplings have many ports of different diameter, you can estimate the maximum flow of each port using the nomogram below.





## **Hydraulic Rotary Couplings DA Series**

## Hydraulic Rotary Coupling DA 045 - DA 060

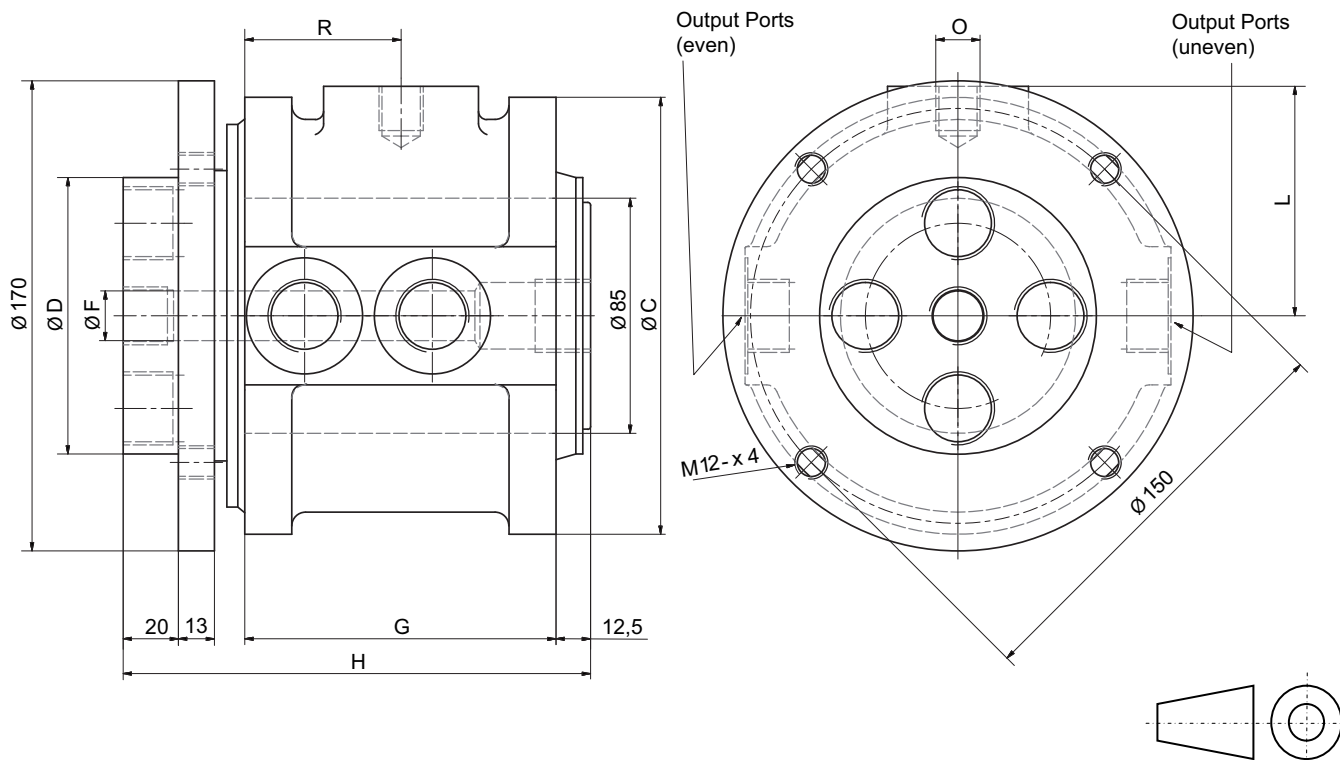


Rated pressure 42 MPa (420 bar)

Dimensions in mm.

Model	A	B	C	D	E	F	G	H	L	M	O	P	R	S	N° of Ways	G 1/4"	G 3/8"	G 1/2"
DA 045/02	94	80	94	62	45	8	59	94	47	M8	M10	14	29,3	10	2		2	
DA 045/04	94	80	94	62	45	8	91	126	47	M8	M10	14	50,5	10	4	2	2	
DA 060/02	114	95	105	75	60	/	76.5	123	61.5	M10	M12	17	39	11	2			2
DA 060/04	114	95	105	75	60	15	103	147.5	59	M10	M12	17	66.5	11	4		2	2
DA 060/06	114	95	114	75	60	18	111.3	158	57	M10	M12	17	55.3	11.7	6	6		

## Hydraulic Rotary Coupling DA 085



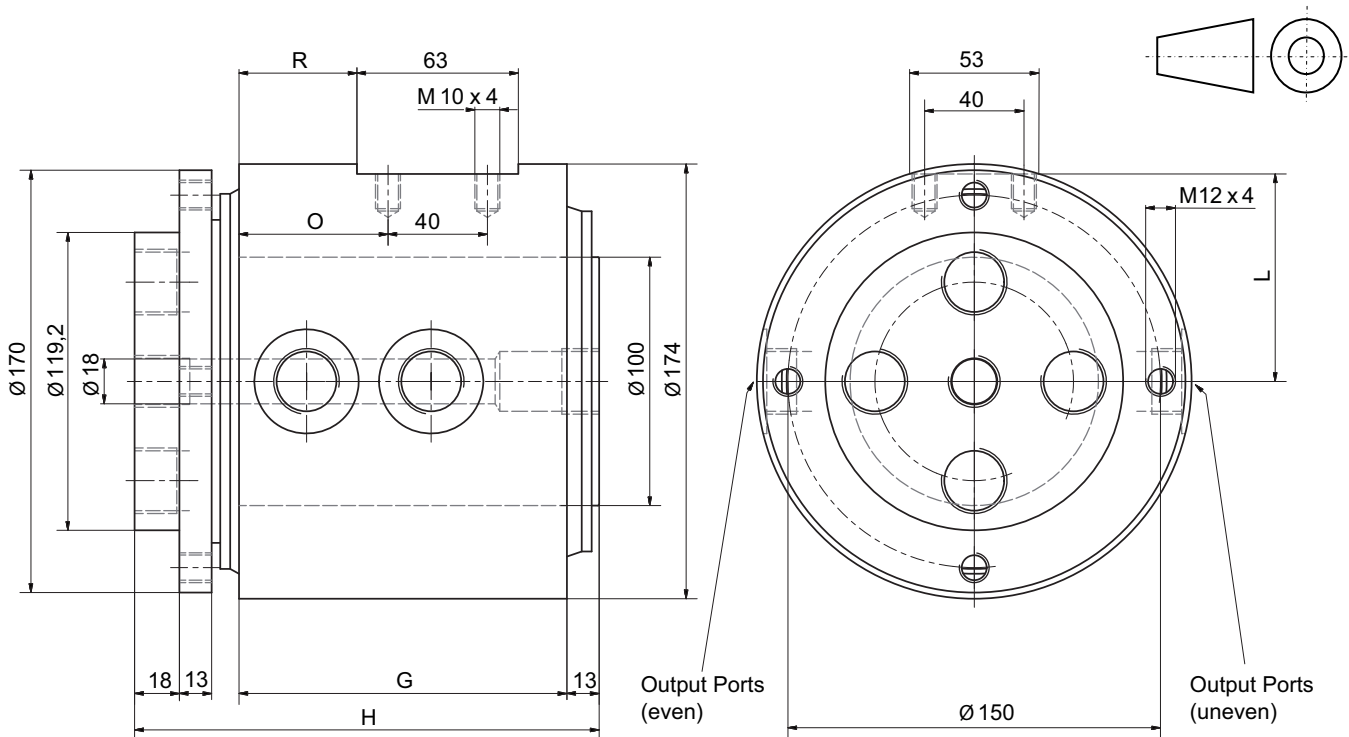
Rated pressure 42 MPa (420 bar)

Dimensions in mm.

Model	C	D	F	G	H	L	O	R	N° of Ways	G 1/4"	G 3/8"	G 1/2"	G 3/4"	G 1"
DA 085/02	160	100	18	68	124.5	104.5	M16	34	2				2	
DA 085/02-01	165	110	11	78	134.5	82.5	M16	39	2					2
DA 085/04	158	100	18	112.5	169	83	M16	56.5	4				4	
DA 085/04-01	165	110	11	125	181.5	82.5	M16	70.8	4			2		2
DA 085/06	151	120	19	149	209.5	105.5	*	77.5	6	2		2	2	
DA 085/08	151	100	30	165	211.5	105.5	*	90	8	6	2			

\* For further informations please contact our Technical Dept.

## Hydraulic Rotary Coupling DA 100



Rated pressure 42 MPa (420 bar)

Dimensions in mm.

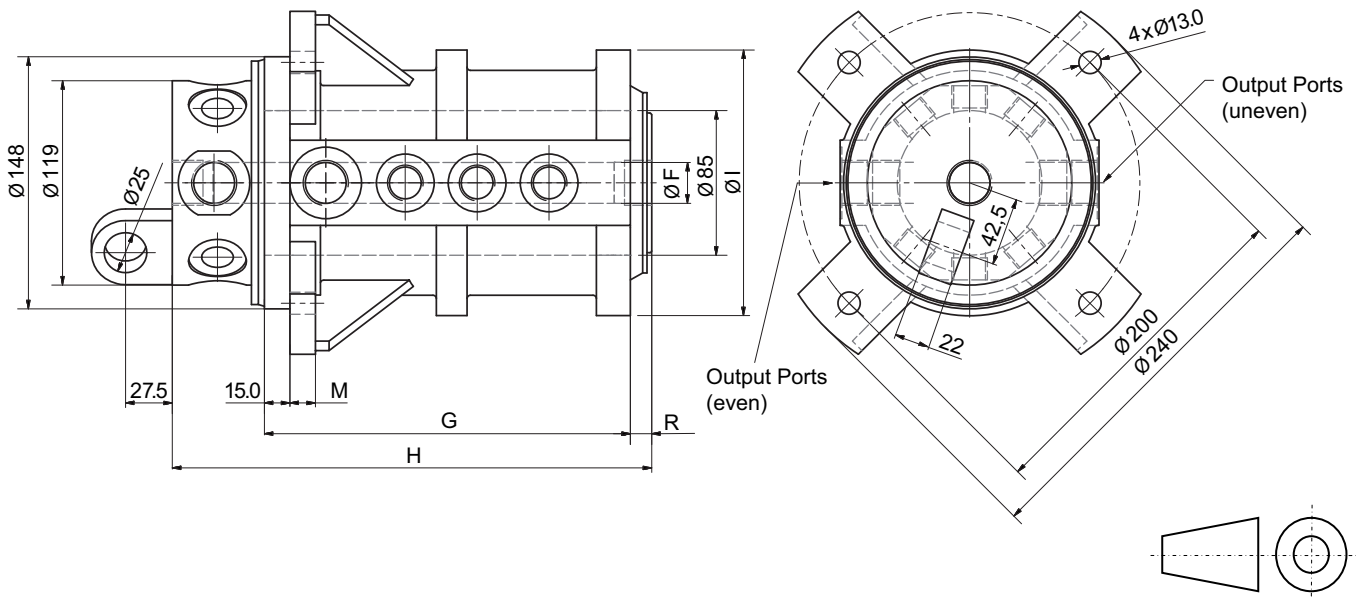
Model	G	H	L	O	R	N° of Ways	G 3/8"	G 1/2"	G 3/4"	G 1"
DA 100/04	144	199	84	60	48.5	4			2	2
DA 100/05	160	215	84	60	48.5	5		2	2	1
DA 100/06	160	215	84	60	48.5	6		2	4	
DA 100/07	181,5	236.5	83	71.5	60	7	4		3	





## **Hydraulic Rotary Couplings DI Series**

## Hydraulic Rotary Coupling DI 085 L

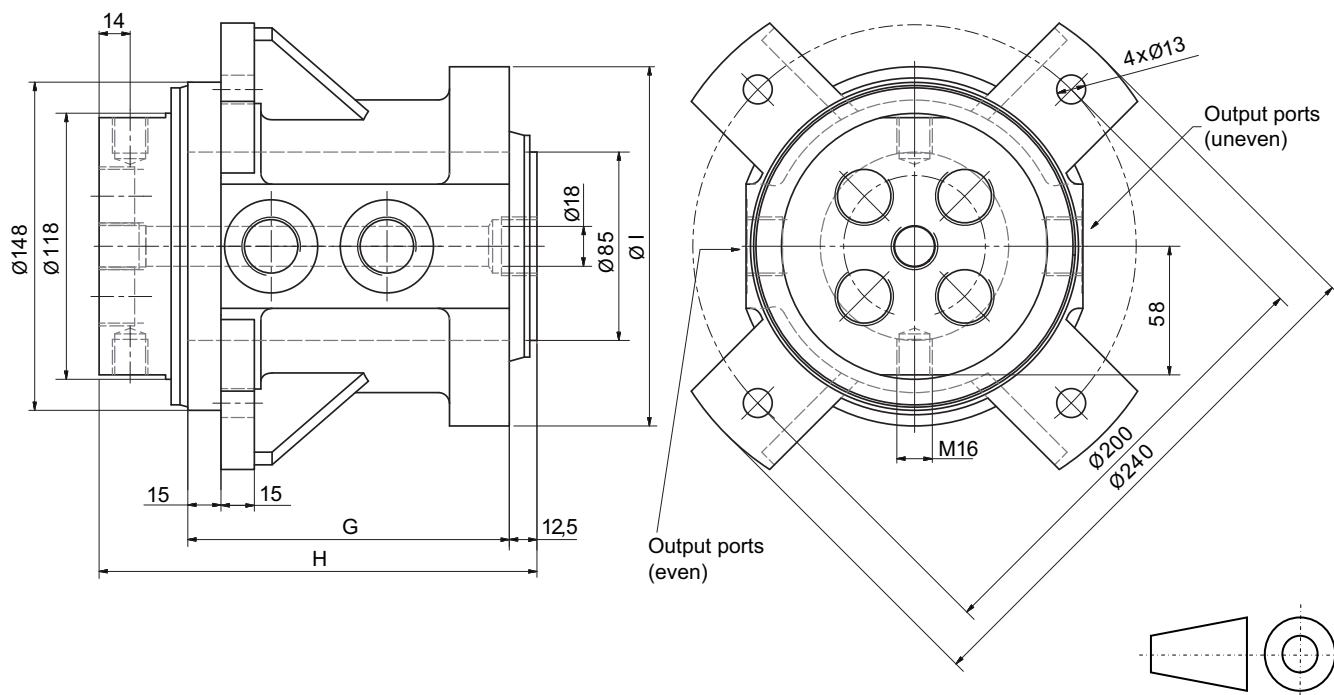


Rated pressure 42 MPa (420 bar)

Dimensions in mm.

Model	F	G	H	I	M	R	N° of Ways	G 3/8"	G 1/2"	G 3/4"
DI 085/02L	22	93	155.5	152	15	12.5	2			2
DI 085/04L	17	145	207.5	162	15	12.5	4			4
DI 085/06	24	173	239.5	155	15	12.5	6		4	2
DI 085/08	24	206	272.5	166	15	12.5	8		8	
DI 085/08-01	24	215	281.5	156	17	12.5	8		6	2
DI 085/10	20	256	319	152	15	8.5	10	4	4	2

**Hydraulic Rotary Coupling DI 085 V**

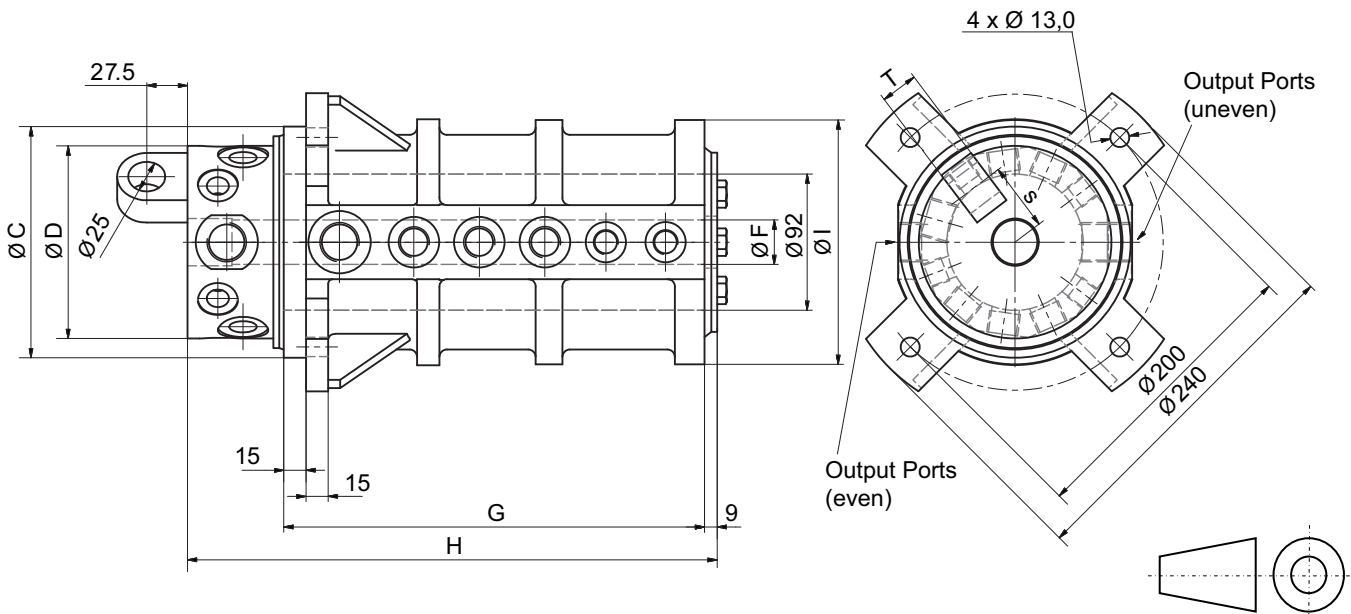


Rated pressure 42 MPa (420 bar)

Dimensions in mm.

Model	G	H	I	N° of Ways	G 1/2"	G 3/4"	G 1"
DI 085/02V	93	145.5	152	2		2	
DI 085/04V	145	197.5	162	4		4	

**Hydraulic Rotary Coupling DI 092**



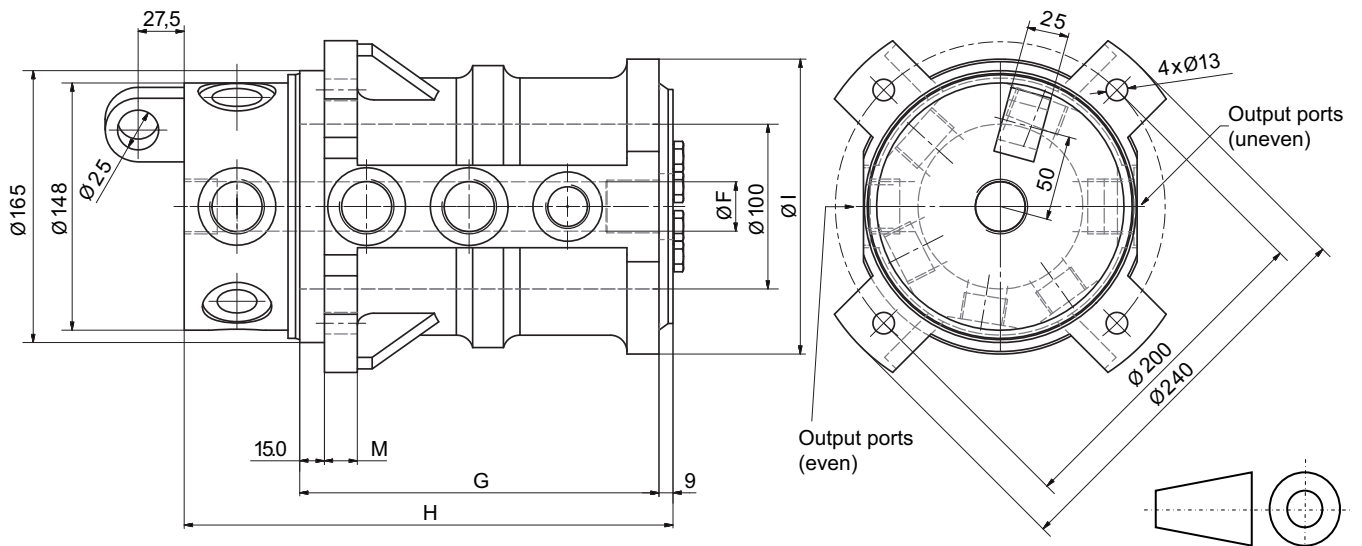
Rated pressure 42 MPa (420 bar)

Dimensions in mm.

Model	C	D	F	G	H	I	S	T	N° of Ways	G 1/4"	G 3/8"	G 1/2"	G 3/4"	G 1"
DI 092/05	156	128	30	158	222	158	45	22	5			1	4	
DI 092/06	156	128	30	239	318	158	45	22	6				6	
DI 092/07	156	128	30	192	256	158	45	22	7		1	4	2	
DI 092/07-01	156	128	20	233	334	165	45	22	7		2	1		4
DI 092/08	156	128	30	234	308	158	45	22	8		2		6	
DI 092/09	156	128	30	234	293	158	45	22	9		2	5	2	
DI 092/11	156	128	30	284	358	164	45	22	11		4	5	2	
DI 092/12	156	128	30	290	364	165	45	22	12	4	4	2	2	
DI 092/14	148	118	30	300	369	158	45	22	14	12		2		
DI 092/18	148	118	/	370	445	150	*	*	18	16		2		

\* For further informations please contact our Technical Dept.

**Hydraulic Rotary Coupling DI 100**

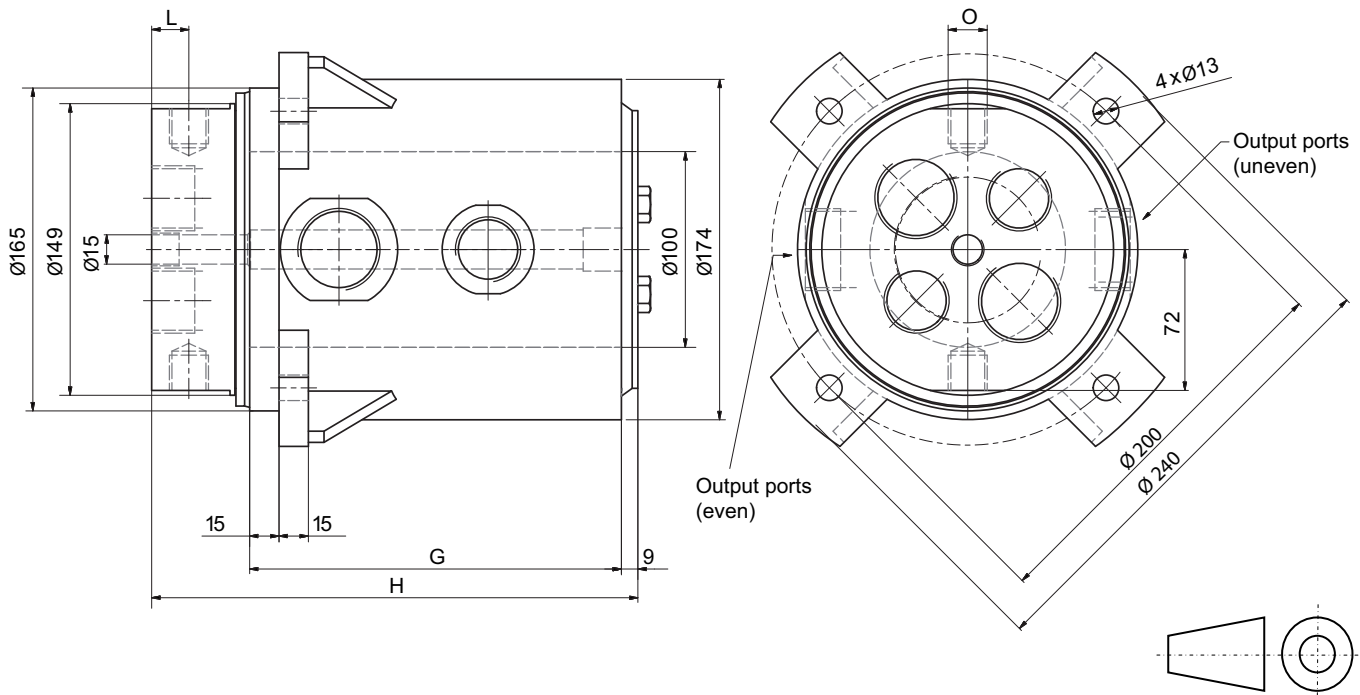


Rated pressure 42 MPa (420 bar)

Dimensions in mm.

Model	F	G	H	I	M	N° of Ways	G 1/4"	G 3/8"	G 1/2"	G 3/4"	G 1"
DI 100/06	30	218	297	185	17	6				2	4
DI 100/07	30	210	284	175	15	7		1	2	4	
DI 100/08-01	30	296	375	174	15	8				4	4
DI 100/10	30	307	386	176	15	10			6	2	2
DI 100/12	30	300	379	176	15	12			10	2	
DI 100/12-01	30	302	376	176	15	12	2	2	6	2	
DI 100/13	30	288	359	176	15	13	4	5	2	1	1
DI 100/14	30	360	439	176	15	14	4		8		2
DI 100/16	20	380	459	176	15	16	10		4		2
DI 100/16-01	18	368	465	176	15	16	2		14		
DI 100/18	20	386	465	168	15	18	12		2	4	

## Hydraulic Rotary Coupling DI 100 V

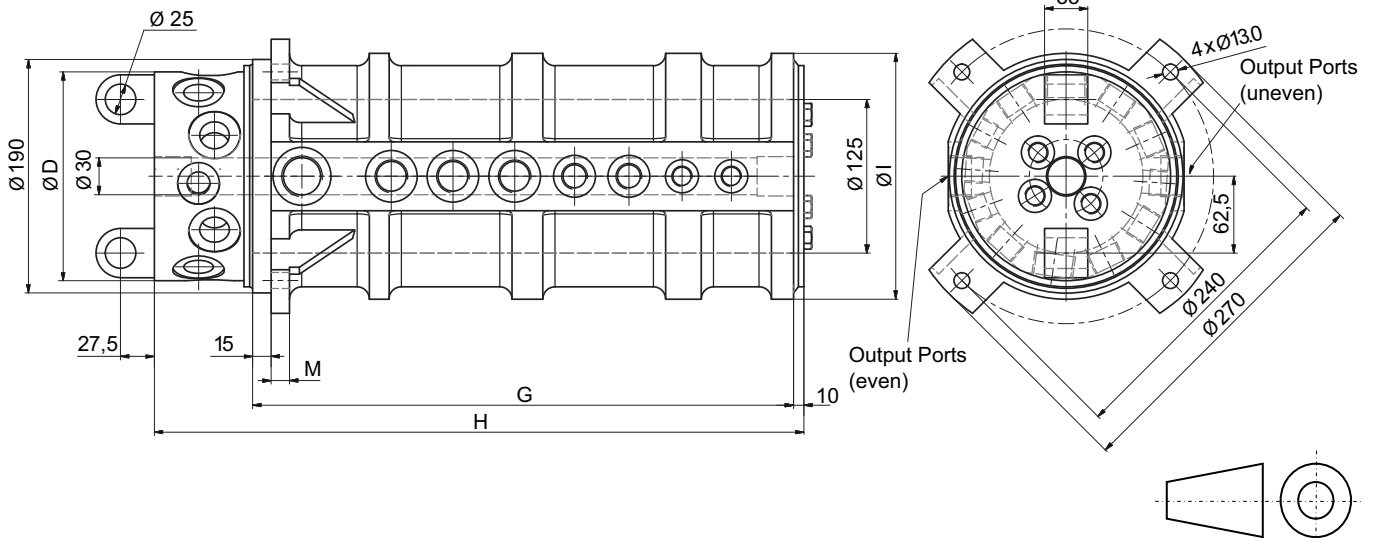


Rated pressure 42 MPa (420 bar)

Dimensions in mm.

Model	G	H	L	O	N° of Ways	G 1"	G 1- 1/4"
DI 100/02V	131	179	15	M16	2		2
DI 100/04V	190	249	19	M20	4	2	2

**Hydraulic Rotary Coupling DI 125**

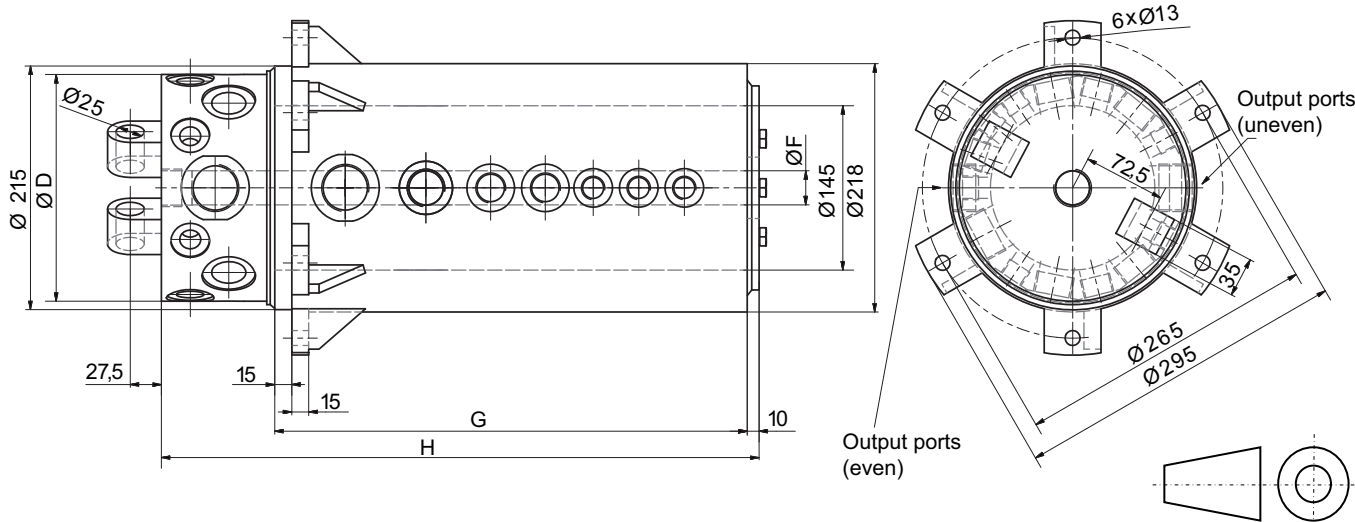


Rated pressure 42 MPa (420 bar)

Dimensions in mm.

Model	D	G	H	I	M	N° of Ways	G 1/4"	G 3/8"	G 1/2"	G 3/4"	G 1"	G 1-1/4"
DI 125/05	168	208	288	208	20	5				1	2	2
DI 125/06	168	226	306	200	15	6				2	2	2
DI 125/06-01	168	224	304	200	15	6					6	
DI 125/07	168	270	360	200	15	7				3		4
DI 125/07-01	168	250	340	200	15	7				3	2	2
DI 125/07-02	168	232	312	200	15	7			3		4	
DI 125/09	168	290	380	200	15	9			2	3	2	2
DI 125/11	168	332	422	200	15	11			4	3	2	2
DI 125/11-01	168	300	410	200	15	11			5	4	2	
DI 125/12	168	353	443	200	15	12			5	3	2	2
DI 125/13	168	391	501	200	15	13			7	4	2	
DI 125/14	168	390	480	200	15	14	4		4	2	2	2
DI 125/16	168	440	530	202	15	16		4	4	6	2	
DI 125/18	178	492	592	200	15	18	2		8	4	2	2
DI 125/18-01	178	442	532	200	15	18	4		8	4	2	

**Hydraulic Rotary Coupling DI 145**



Rated pressure 42 MPa (420 bar)

Dimensions in mm.

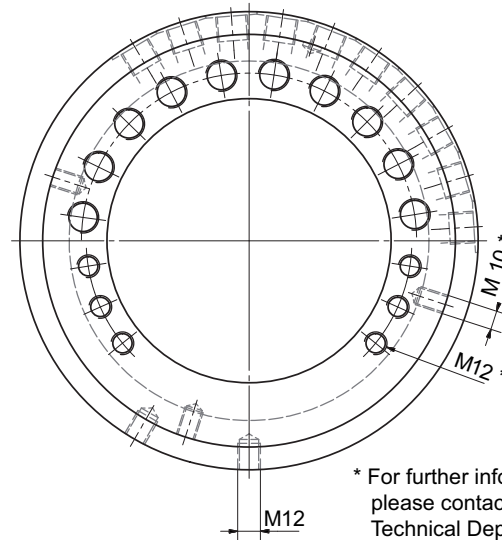
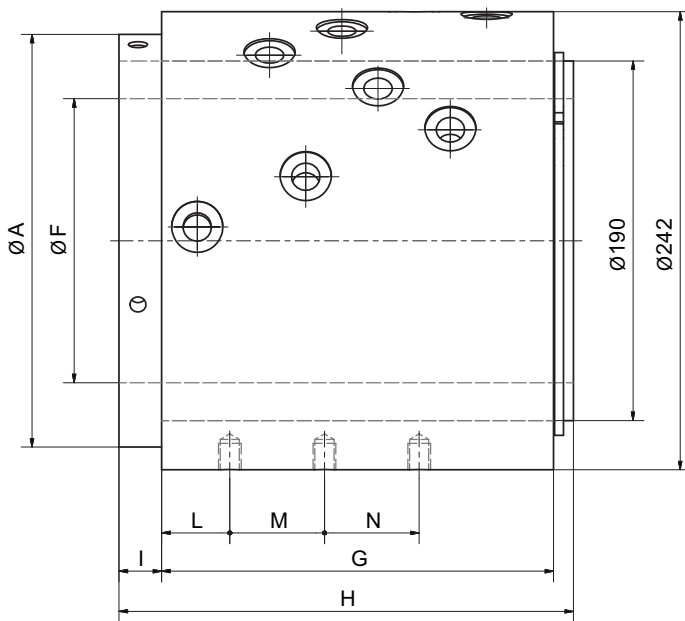
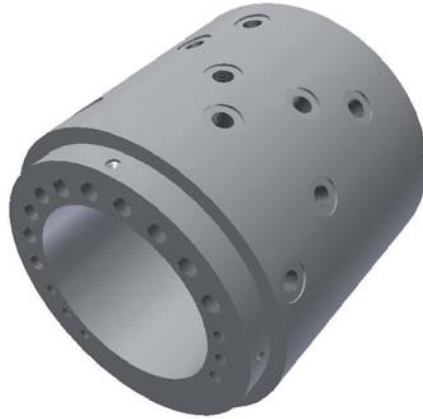
Model	D	F	G	H	N° of Ways	G 1/4"	G 1/2"	G 3/4"	G 1"	G 1- 1/4"	G 1- 1/2"
DI 145/07	198	50	249	359	7			3	2	2	
DI 145/07-01	198	60	246	356	7		1	2	2	2	
DI 145/07-02	198	60	278	388	7		1			6	
DI 145/07-03	198	50	300	410	7	2		1			4
DI 145/09	178	50	290	400	9		2	2	3	2	
DI 145/09-01	178	50	280	390	9		3	2	2	2	
DI 145/11	198	50	360	460	11			2	9		
DI 145/11-01	198	50	320	430	11		5	2	2	2	
DI 145/12	198	60	380	490	12		1	4	5	2	
DI 145/12-02	198	30	427	537	12		1	3	6	2	
DI 145/13	198	50	494	604	13		6	3	2	2	
DI 145/15	198	30	477	587	15		6	3	4	2	
DI 145/17	198	30	489	599	17		5	4	4	4	



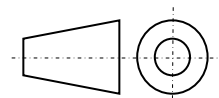


**Hydraulic Rotary Couplings  
for Concrete Mixer Pump  
DPC Series**

## Hydraulic Rotary Coupling DPC 190



\* For further informations please contact our Technical Dept.



Rated pressure 42 MPa (420 bar)

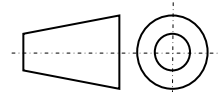
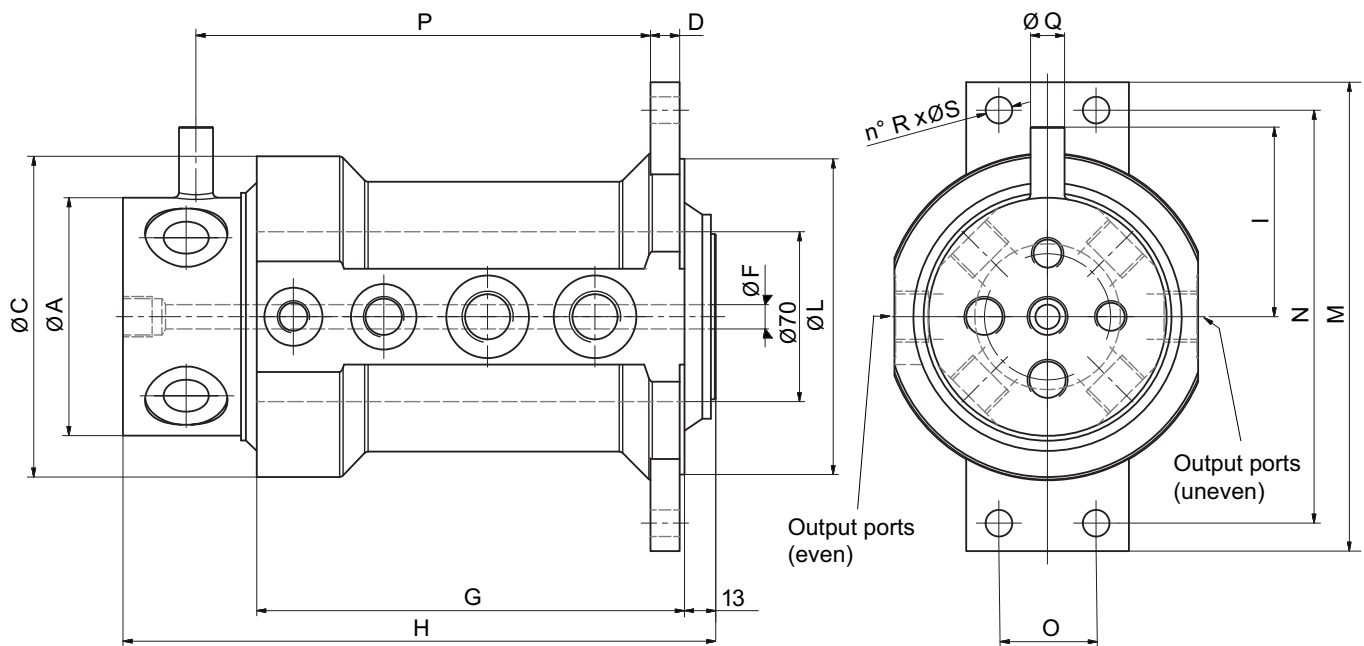
Dimensions in mm.

Model	A	F	G	H	I	L	M	N	N° of Ways	G 3/8"
DPC 190/08	217	150	190	222	22.5	36	50	50	8	8
DPC 190/10	217	150	207	240	22.5	36	50	50	10	10
DPC 190/12	217	150	246	279	22.5	36	50	50	12	12
DPC 190/16	227	140	322	362	29.5	85	75	75	16	16
DPC 190/18	227	140	360	400	29.5	105	75	75	18	18



## **Mini Hydraulic Rotary Couplings DM Series**

## Mini Hydraulic Rotary Coupling DM 070



Rated pressure 42 MPa (420 bar)

Dimensions in mm.

Model	A	C	D	F	G	H	I	L	M	N	O	P	Q	R	S	N° of Ways	G 1/8"	G 1/4"	G 3/8"	G 1/2"
DM 070/07	79	125	15	/	127	169	70	110	170	140	/	122.5	14	2	13	7		7		
DM 070/07-01	89	125	15	20	127	175	70	110	170	140	/	125.5	14	2	13	7		3	4	
DM 070/08	89	116	12	/	164	232	65	130	190	170	40	155	14	4	9	8	1	3	4	
DM 070/08-01	99	132	12	/	176	244	70	130	193	170	40	187	14	4	11	8		2	2	4
DM 070/08-02	99	132	12	/	172	240	70	130	193	170	40	178	14	4	11	8		1	7	
DM 070/08-03	89	125	15	20	155	219	85	110	170	140	/	30	20	2	13	8		4	4	
DM 070/09	99	132	12	/	176	252	70	130	193	170	40	187	14	4	9	9			4	5
DM 070/09-01	91	132	12	/	175	243	66	130	195	170	40	191	14	4	9	9		5	4	
DM 070/11	79	110	11	/	181	223.5	70	110	170	140	/	180.5	14	2	13	11		11		



## **Electric Rotary Couplings CE Series**

## Electric Coupling CE Series General Information

### Description

Electrical connector rotating with variable numbers of rings depending on the needs of the customer.

The Electrical connector can be coupled with the hydraulic rotary couplings of our production.

### Typical Applications

Where the request is the transmission of signals, and fieldbus current from a fixed part to a rotating reversible.

Typical applications include cranes, building equipment rotating aerial platforms, etc.

### General Features

Rotation speed: 0-15 n / min. (higher speeds on request)

Operating temperature: -20 / +60 °C

Protection degree: IP55 / 65

Rotation direction: reversible (CW / CCW)

### Electrical Characteristics

**Rated voltage:** 500V AC, 220V DC

**Intensity of current:** ....mA - 80 A

**Contact resistance ring-brush:** <20mΩ

**Ring Material:** bronze with silver plating treatment for the power lines and gilding for signals lines

**Brush holder:** double A-arm (2 brushes per ring)

**Brush Material:** metalcarbon for power lines and Silvergraphite for signals lines

**Cable outlet:** axial for rings, radial for brushes

**Length:** 3m from both sides, different lengths on request.

**Cable cross section:** single-core cables from 0.75mm<sup>2</sup> to 4 mm<sup>2</sup> depending on the current intensity requested

**Shielded cables for signals**

### Used Materials

**Base:** anodized aluminum

**Housing:** nickel plated or anodized aluminum

**Cover:** anodized aluminum

**Cable routing:** smooth PVC

**Standard fittings for wiring guide:** nickel plated brass or galvanized with seal

**Screws:** galvanized steel

## Electric Rotary Coupling CE Series

### Accessories

- Installation on hydraulic rotary coupling
- Connectors
- Prepared for encoder and eventual installation if required
- Special cables
- Anti-condensation heaters
- Conduits and fittings suitable for special applications

### Order Code

COLLECTOR ELECTRICAL CE 110 / T N° x A - L

T = total electrical pathways required

N = N° number of electrical pathways of characteristic C

C = current density (A)

L = length of the output cables (m)

### Example

To order a manifold size CE 110 with 8-way power 10 A and 4 way 20 A + CAN BUS which engages 5 rings. Output cables 3 m. length.

**CODE = CE 110 / 17 n° 8 x 10A - n° 4 x 20A - n° 5 x CAN BUS - 3 m.**

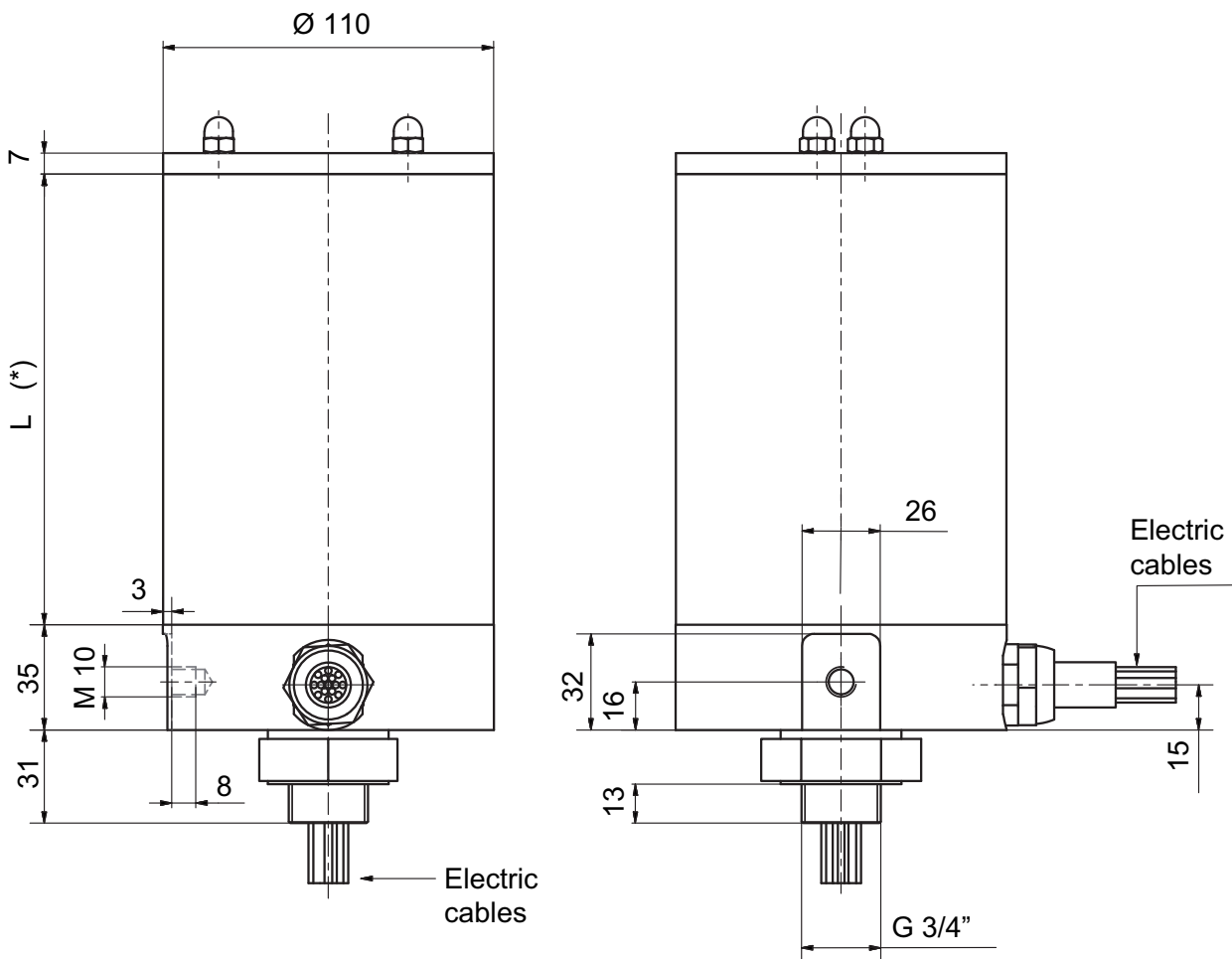
To order a manifold size CE 163 with 8-way power 10 A and 4 way 20 A + CAN BUS which engages 5 rings. Output cables 3 m. length.

**CODE = CE 163 / 17 n° 8 x 10A - n° 4 x 20A - n° 5 x CAN BUS - 3 m.**

**Electric Rotary Coupling CE 110**



**Installation Drawing**

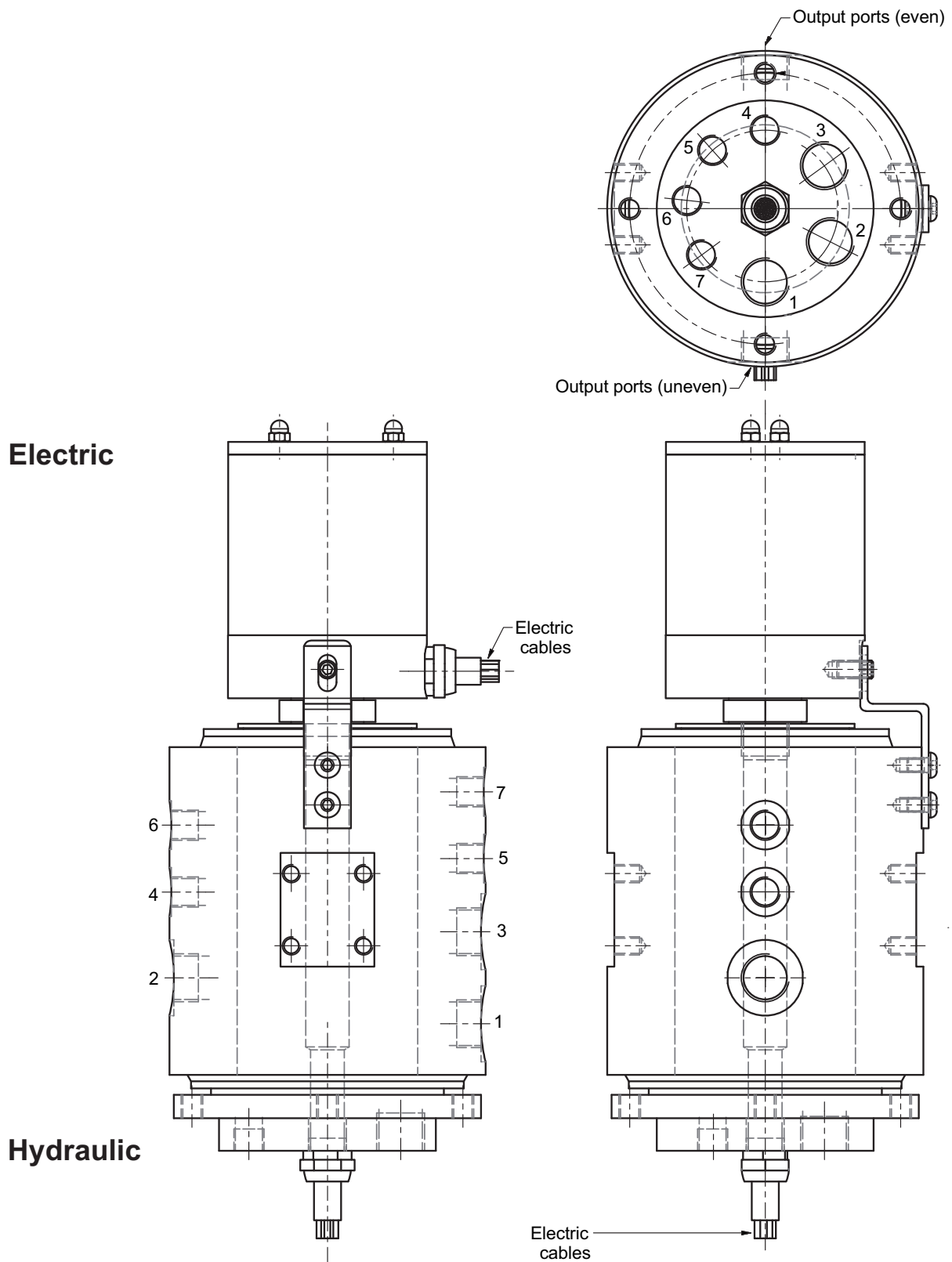


**L (\*) - Variable, depending on the number of rings.**



## Electric Rotary Coupling CE 110

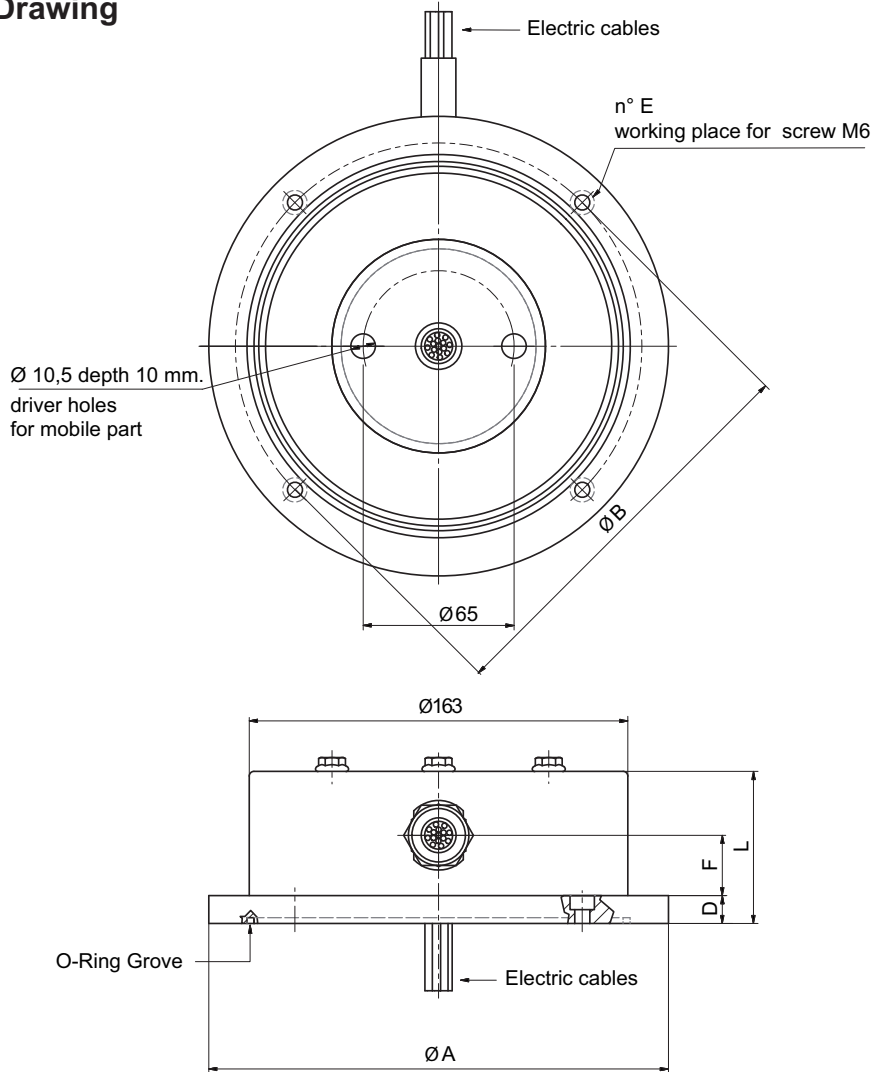
Example of installation on Hydraulic Rotary Coupling



**Electric Rotary Coupling CE 163**



**Installation Drawing**



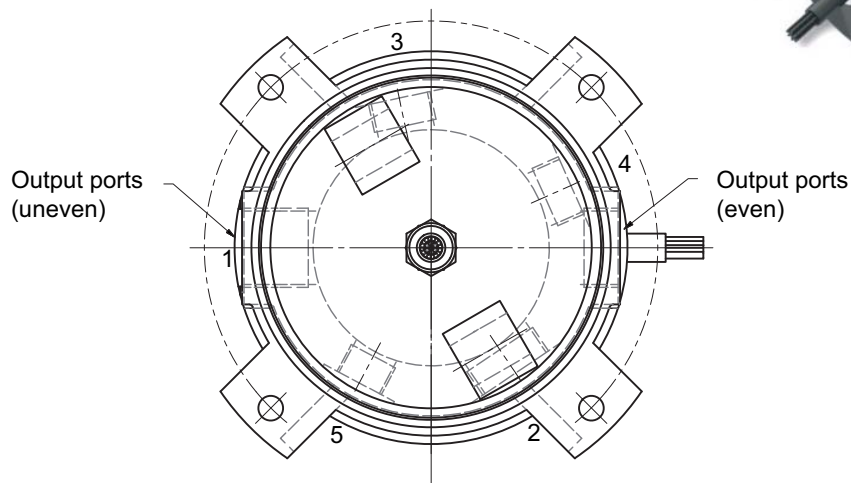
A*	B	L**	D	E	F*
170	130	variable	13	4	variable from 26 to 38
170	130	variable	4.5	4	variable from 26 to 38
180	164	variable	18.5	4	variable from 26 to 38
199	175	variable	10	4	variable from 26 to 38
218	205	variable	12.5	6	variable from 26 to 38

\* For further information please contact our Technical Dept.

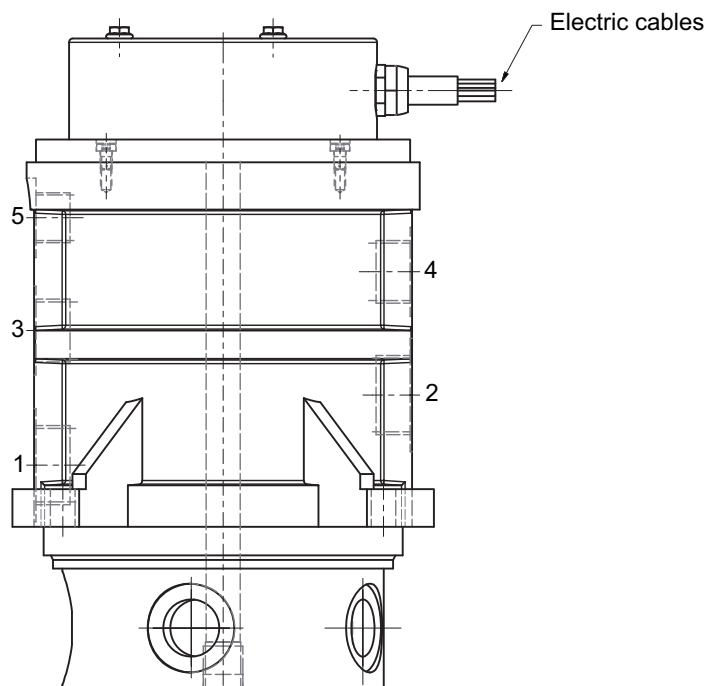
\*\* Variable, depending on the number of rings

**Electric Rotary Coupling CE 163**

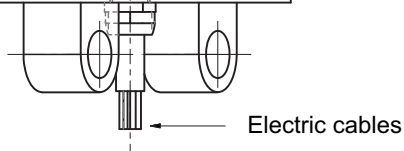
Example of installation on Hydraulic Rotary Coupling



**Electric**



**Hydraulic**

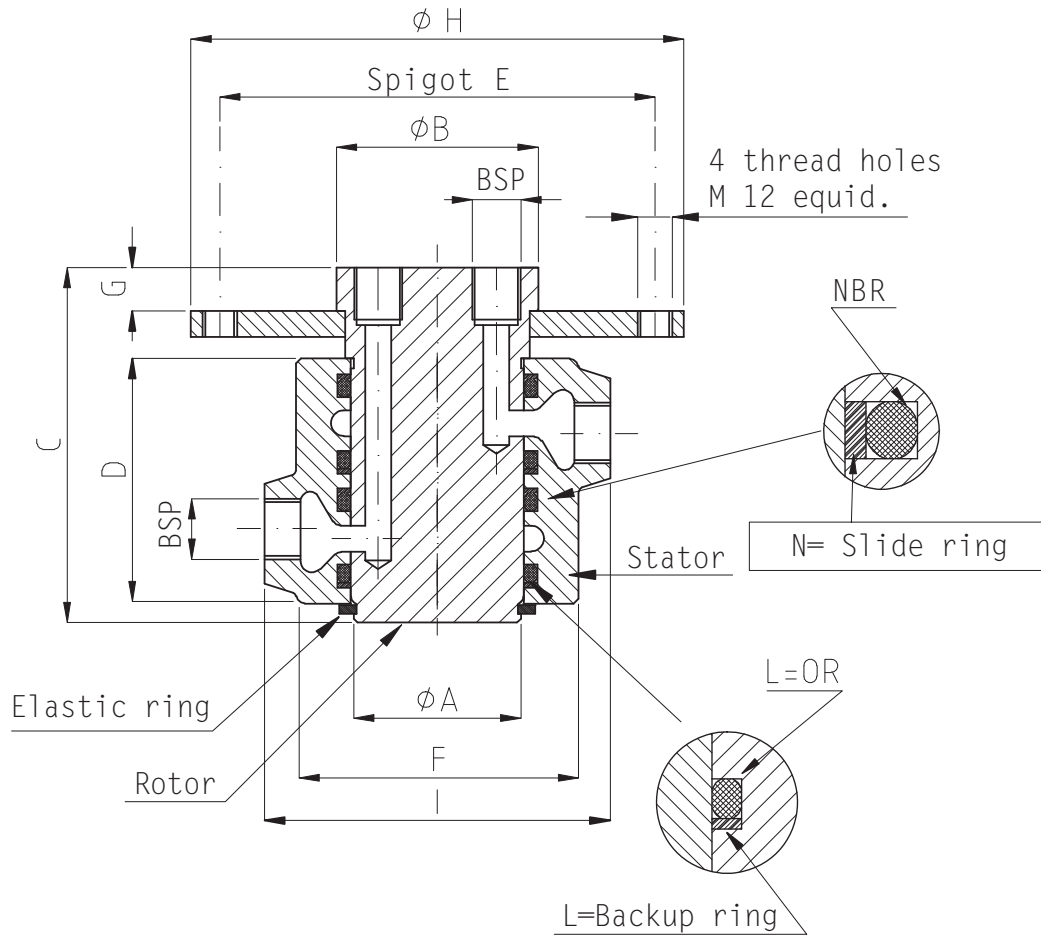


This page has been deliberately left blank.



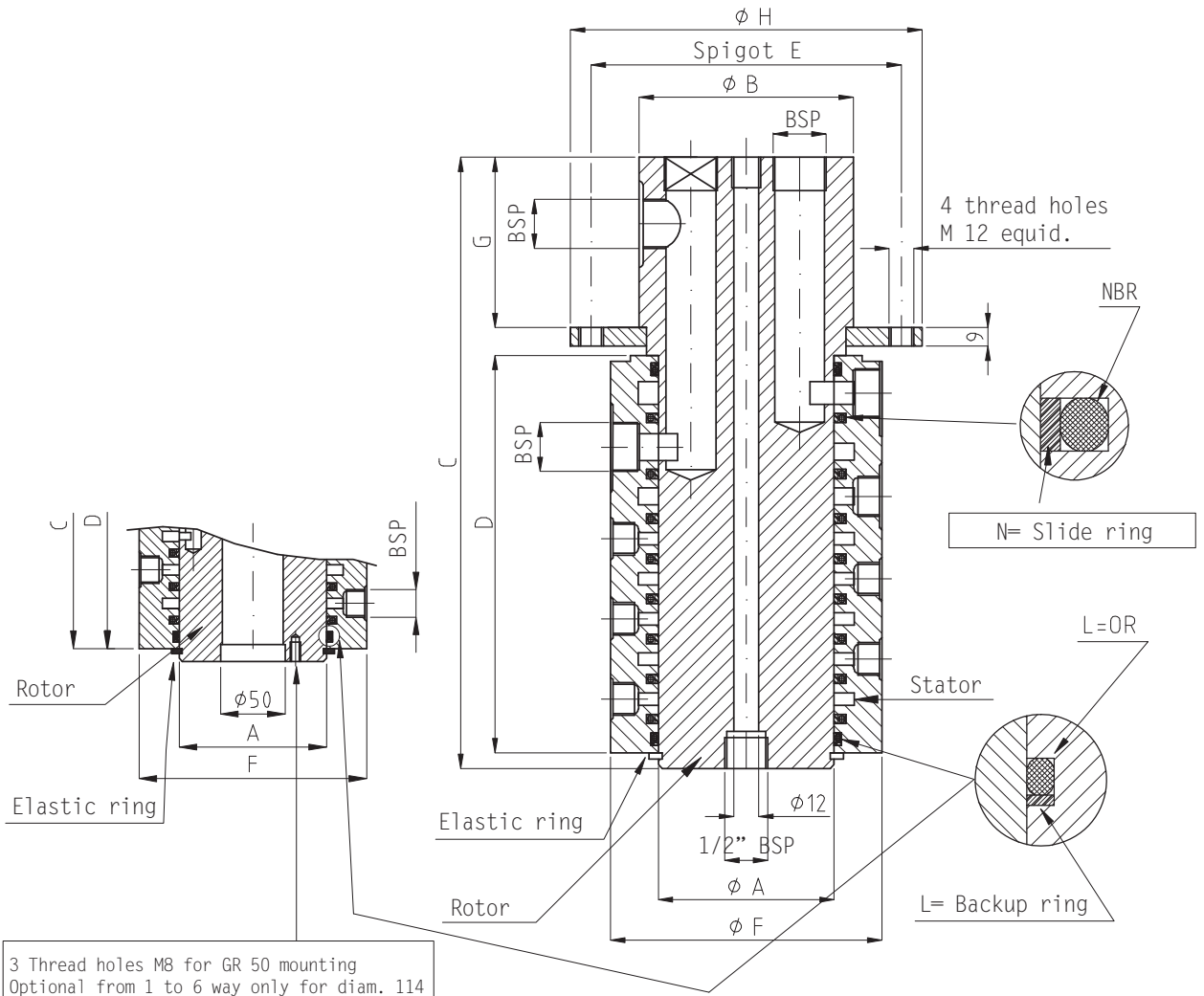
## Special Rotary Couplings

Hydraulic Rotary Coupling GRS 25 - 85/6



Model code	Type	Max. press. bar	BSP Ports					$\phi A$	$\phi B$	C	D	E	F	G	$\phi H$	L	M	N	Stator material	Rotor material
			1/4	3/8	1/2	3/4	1"													
GRS															O-RING	Backup ring	Seals			
	2V $\phi$ 25	250	2				25	45	137	78	66	50	45	80	02 OR 3100 03 OR 3112		N° 03 NCS/R $\phi$ 25 X 2,8	C45	C45	
	2V $\phi$ 30		2				30	44	102	62	66	80	25	90	02 OR 3118 03 OR 3131		N° 03 NCS/R $\phi$ 30 X 2,8			
	2V $\phi$ 35				2		35	119	122	100	100	80		119	02 OR 3137 04 OR 3156		N° 04 NCS/R $\phi$ 35 X 2,8			
	2V $\phi$ 45			2			45	59		81	80	95		95						
	5V $\phi$ 45	5																		
	2V $\phi$ 60	200			2		60	70	124	85	151	98	15	188	n° 04 OR 6237	n° 04 $\phi$ 60		CAST IRON G 25	C45	
	4V $\phi$ 60MB	300		2	2		60	72	162	117	151	113	22	188	N° 05 OR 6250		N° 05 LRC $\phi$ 60X5,7	C45	C45	
	8V $\phi$ 70		4	2	2		70	90	389	195	151	126	70	175	n° 9 OR 177		N° 9 NCS/R $\phi$ 70 X 3,8	C45	C45	
	8V $\phi$ 75			6	1	1	75	90	392	205	151	112	70	180	N° 9 OR 4312		N° 9 NCS/R $\phi$ 75 X 3,8	C45	C45	
	2V $\phi$ 85	200			1	1	85	99	135	93,5	151	128	15	188	N° 04 OR 6337	N° 04 $\phi$ 85		CAST IRON G 25	C45	
	4V $\phi$ 85	200			3	1	85	99	230	187	151	128	18	188	N° 08 OR 6337	N° 08 $\phi$ 85		CAST IRON G 25	C45	
	4V $\phi$ 85MB	200			2	2	85	99	191	148	151	128	18	188	N° 05 OR 6337	N° 08 $\phi$ 85		CAST IRON G 25	C45	
	6V $\phi$ 85TB	300			4	2	85	99	231	189	151	118	18	175	02 OR 6337 06 OR 6350	N° 02 $\phi$ 85	N° 06 LRC $\phi$ 85X5,7	Iron tube fe 520	C45	

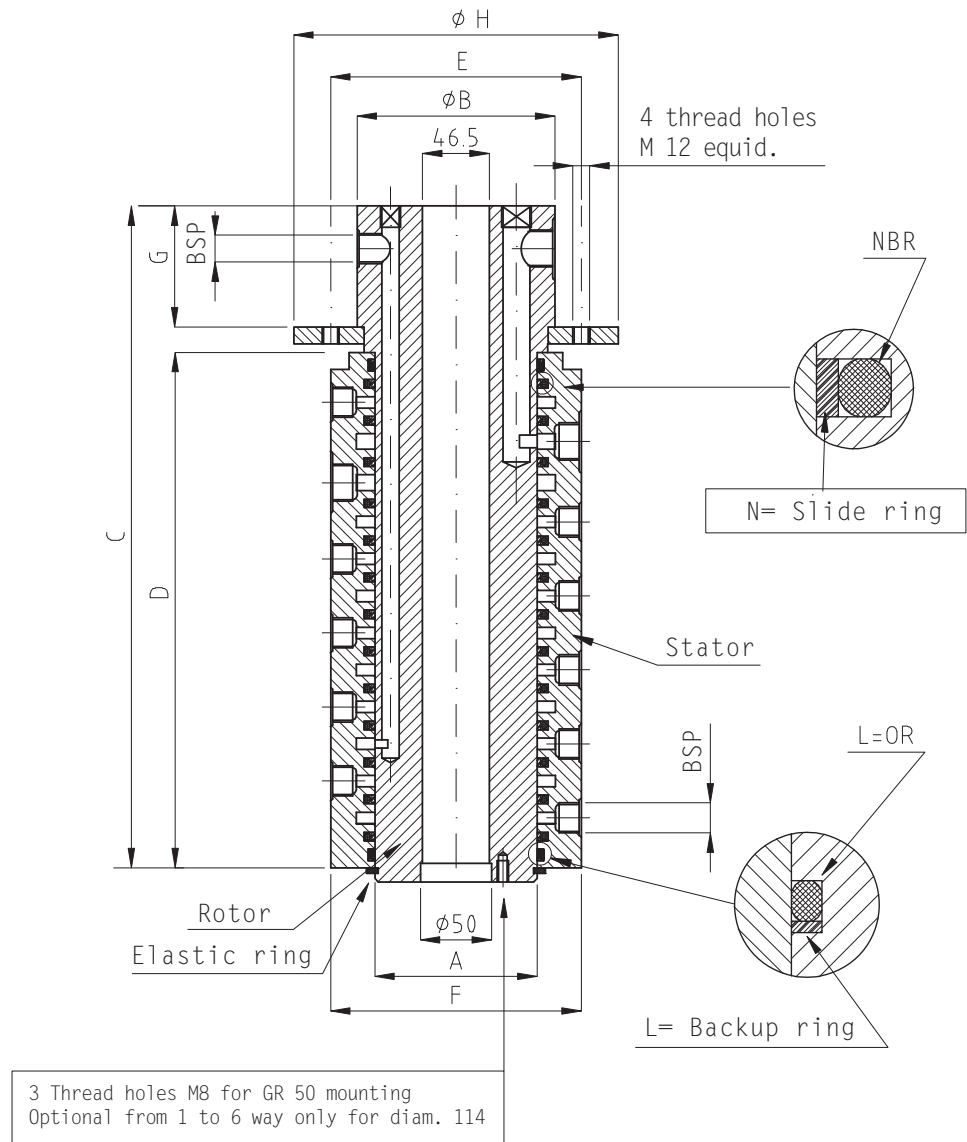
Hydraulic Rotary Coupling GRS 85 - 114/10



3 Thread holes M8 for GR 50 mounting  
Optional from 1 to 6 way only for diam. 114

Model code	Type	Max Press.	BSP Ports				$\phi A$	$\phi B$	C	D	E	F	G	$\phi H$	L	M	N	Stator material	Rotor material
			M14 x1.5	3/8	1/2	3/4													
GRS	6V $\phi 85TA$	300		4	2		85	104	293	189	151	165	83	175	02 OR 6337 06 OR 6350	N° 02 $\phi 85$	N° 06 LRC $\phi 85 \times 5,7$	Iron tube fe 520	C45
	8V $\phi 85$	300		8			85	99	270	189	151	135	60	175	02 OR 6337 07 OR 6350	N° 02 $\phi 85$	N° 07 LRC $\phi 85 \times 5,7$	Iron tube fe 520	C45
	9V $\phi 85$	300			7	2	85	119	370	252	176	146	89	198	02 OR 6337 08 OR 6350	N° 02 $\phi 85$	N° 08 LRC $\phi 85 \times 5,7$	Iron tube fe 520	C45
	10V $\phi 85$	300		8	2		85	99	312	231	151	135	60	175	02 OR 6337 09 OR 6350	N° 02 $\phi 85$	N° 09 LRC $\phi 85 \times 5,7$	Iron tube fe 520	C45
	11V $\phi 85$	300			9	2	85	119	412	294	176	146	89	198	02 OR 6337 10 OR 6350	N° 02 $\phi 85$	N° 10 LRC $\phi 85 \times 5,7$	Iron tube fe 520	C45
	12V $\phi 85$	300	10	2			85	99	370	273	175	135	70	200	02 OR 6337 11 OR 6350	N° 02 $\phi 85$	N° 11 LRC $\phi 85 \times 5,7$	Iron tube fe 520	C45
	15V $\phi 90$	300	13		2		90	110	412	330	176	150	66	198	N° 02 OR	N° 02 $\phi 90$	14 NCS/R $\phi 90 \times 3,8$	Iron tube fe 520	C45
	5V $\phi 114$	300		2	2	1	114	124	217	173	176	173	17	228	06 OR 6450	N° 10 $\phi 114$		Iron tube fe 520	C45
	5V $\phi 114$ two pump	300		2	2	2	114	129	248	166	176	173	56	228	02 or 6450 04 or 201	N° 02 $\phi 114$	04 NCS/R $\phi 114 \times 5,8$	Iron tube fe 520	C45
	6V $\phi 114$	300		4	2		114	129	285	241	176	173	17	228	02 OR 6450 07 OR 201	N° 02 $\phi 114$	07 NCS/R $\phi 114 \times 5,8$	Iron tube fe 520	C45
	6V $\phi 114$	300		4		2	114	129	285	241	176	173	17	228	02 OR 6450 07 OR 201	N° 02 $\phi 114$	07 NCS/R $\phi 114 \times 5,8$	Iron tube fe 520	C45
	7V $\phi 114$ two pump	300		4	2	2	114	129	292	210	176	173	56	228	02 or 6450 06 or 201	N° 02 $\phi 114$	06 NCS/R $\phi 114 \times 5,8$	Iron tube fe 520	C45
	7V $\phi 114$	300		3	4		114	129	701	206	176	192	22	228	02 or 6450 06 or 201	N° 02 $\phi 114$	06 NCS/R $\phi 114 \times 5,8$	Iron tube fe 520	C45
	8V $\phi 114$	350			8		114	129	394	281	176	173	85	228	02 OR 6450 09 OR 201	N° 02 $\phi 114$	02 NCS/R $\phi 114 \times 5,8$	Iron tube fe 520	C45
	10V $\phi 114$	350			10		114	139	489	366	176	173	99	228	02 OR 6450 11 OR 201	N° 02 $\phi 114$	11 NCS/R $\phi 114 \times 5,8$	Iron tube fe 520	C45

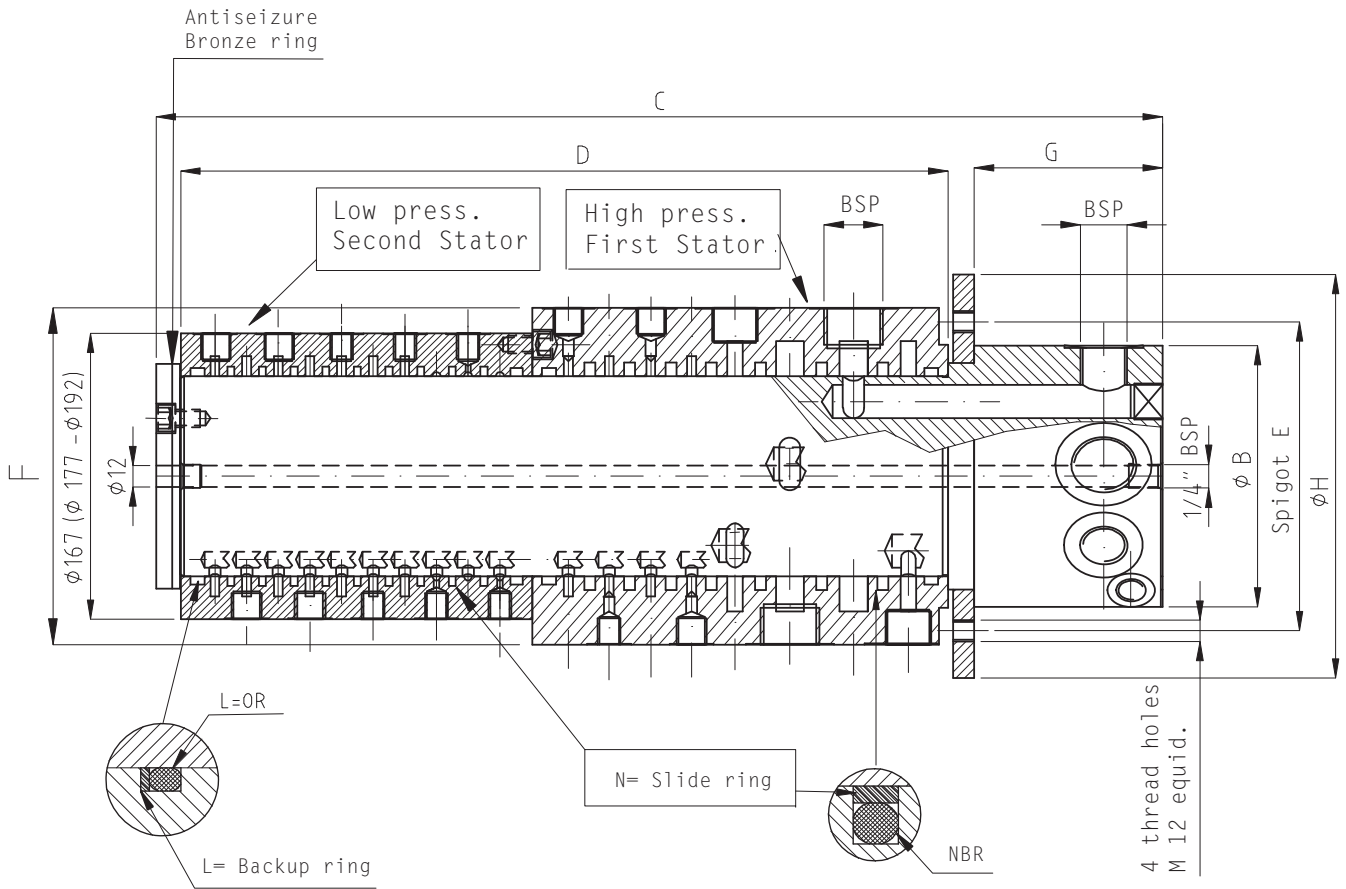
Hydraulic Rotary Coupling GRS 114/10 - 114/19



Model code	Type	Max press. bar	BSP Ports					φ A	φ B	C	D	E	F	G	φ H	L	M	N	Stator material	Rotor material
			1/4	3/8	1/2	3/4	1"													
GRS															O-RING	Backup ring	Seals			
	10V φ114	350			6	2	2	114	139	426	308	176	173	89	228	02 OR 6450 11 OR 201	N° 02 φ 114	11 NCS/R φ 114 X 5,8	Iron tube fe 520	C45
	12V φ114	350			10	2		114	139	475	362	176	173	85	228	02 OR 6450 13 OR 201	N° 02 φ 114	13 NCS/R φ 114 X 5,8	Iron tube fe 520	C45
	13V φ114	350	1		12			114	139	538	421	176	176	80	228	02 OR 6450 14 OR 201	N° 02 φ 114	14 NCS/R φ 114 X 5,8	Iron tube fe 520	C45
	15V φ114	350	13			2		114	139	482	356	176	173	98	228	02 OR 6450 14 OR 201 02 OR 4475	N° 02 φ 114	14 NCS/R φ 114 X 5,8 02 NCS/R φ 114 X 3,8	Iron tube fe 520	C45
			Metric & BSP Ports																	
			M 14 x 1,5	3/8	1/2	3/4	1"													
	17V φ114	350	15			2		114	139	491	398	176	176	61	228	02 OR 6450 16 OR 201	N° 02 φ 114	16 NCS/R φ 114 X 5,8	Iron tube fe 520	C45
	19V φ114	350	17			2		114	139	533	440	176	176	61	228	02 OR 6450 18 OR 201	N° 02 φ 114	18 NCS/R φ 114 X 5,8	Iron tube fe 520	C45

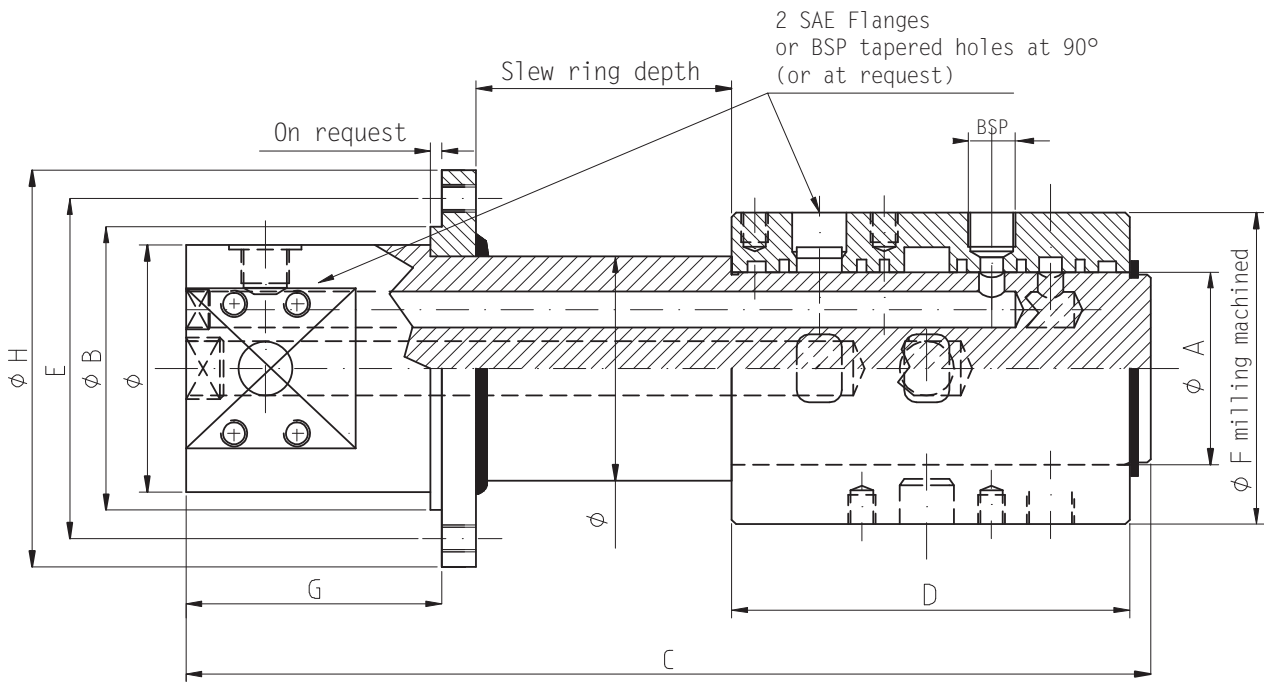


**Hydraulic Rotary Coupling GRS 114/18 - 114/26**



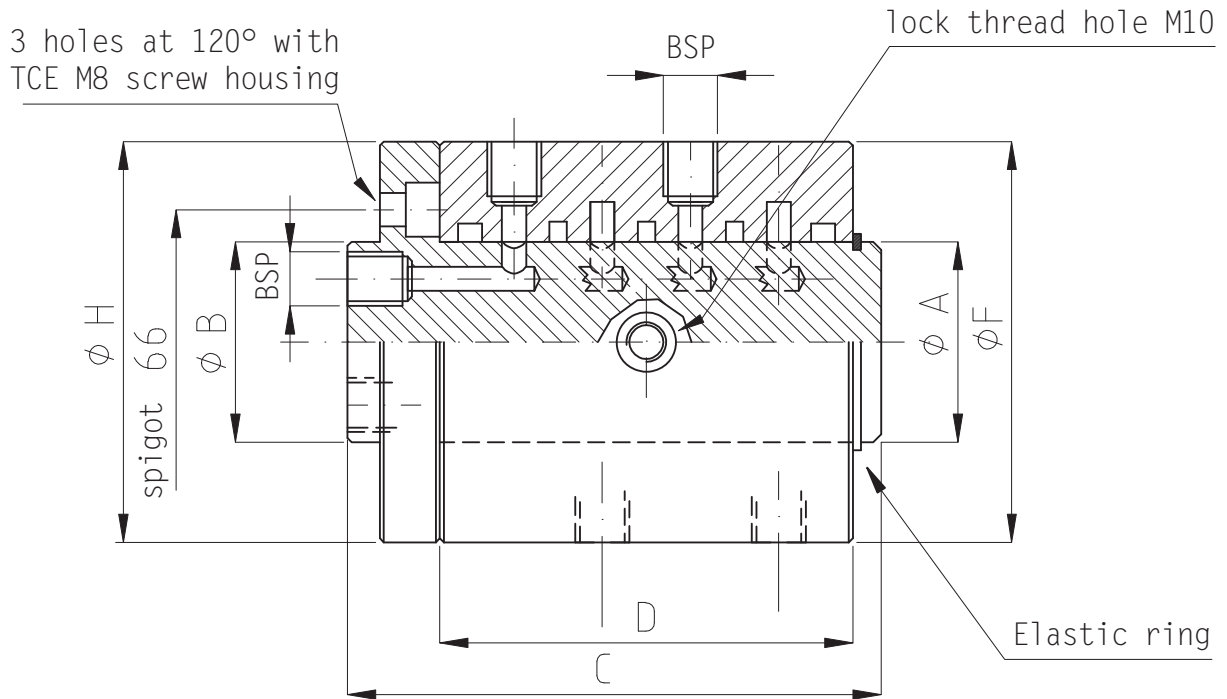
Model code	Type	Max. press. BAR	BSP Ports					φ A	φ B	C	D	E	F	G	φ H	L	M	N	Stator material	Rotor material
			1/4	3/8	1/2	3/4	1"													
GRS															O-RING	Backup ring	Seals			
	18V φ114		7	7	2	2	114	139	572	437	176	192	107	230	04 OR 6450 16 OR 201	N° 04 φ 114	16 NCS/R φ 114 X 5,8	Iron tube fe 520	C45	
	19V φ114			15	4		114	139	568	446	176	192	107	228	04 OR 6450	N° 04 φ 114		Iron tube fe 520	C45	
	20V φ114			16	4		114	139	600	464	176	192	107	228	04 OR 6450	N° 04 φ 114		Iron tube fe 520	C45	
	21V φ114		4	13	4		114	139	612	490	176	192	107	228				Iron tube fe 520	C45	
			Metric & BSP Ports																	
			M14 x15	3/8	1/2	3/4	1"													
	23V φ114		19	1	1	2	114	139	661	554	176	176	76	228	04 OR 6450 21 OR 201	N° 04 φ 114	21 NCS/R φ 114 X 5,8	Iron tube fe 520	C45	
	25V φ114		21	1	1	2	114	139	696	576	176	176	89	228	04 OR 6450 23 OR 201	N° 04 φ 114	23 NCS/R φ 114 X 5,8	Iron tube fe 520	C45	
	26V φ114		22	1	1	2	114	139	722	602	176	176	89	228	03 OR 6450 24 OR 201	N° 03 φ 114	23 NCS/R 2 TEN. SPEC.	Iron tube fe 520	C45	

**Hydraulic Rotary Coupling GRT 60 - 114**



Model code	Type	Max. press. bar	BSP & SAE PORTS						φ A	φ B	C	D	E	F	G	φ H	L	M	N	Stator material	Rotor material
			1/4	3/8	1/2	3/4	1"														
GRT	2V φ60		1	2		SAE 2		60	100	309	100	120	125	87	136	02 OR 66 03 OR 168	X X	03 NCS/R φ 60	Iron tube fe 520	C45	
	5V φ75		1	2		2+2		75	125	316	193	151	185	95	175	02 OR 179 06 OR 4312	N° 02 φ 75	06 NCS/R φ 75	Iron tube fe 520	C45	
	5V φ75		1	2			2+2	75	125	330	208	151	195	95	175	02 OR 179 06 OR 4312	N° 02 φ 75	06 NCS/R φ 75	Iron tube fe 520	C45	
	4V φ85			2		SAE 2		85	99	393	161	151	150	95	175	02 OR 6337 06 OR 4362	N° 02 φ 85	06 NCS/R φ 85 X 3,8	Iron tube fe 520	C45	
	4V φ85				2	SAE 2		85	104	430	174		150	105		02 OR 6337 05 OR 4362	N° 02 φ 85	05 NCS/R φ 85 X 3,8	Iron tube fe 520	C45	
	5V φ85		1	2		SAE 2		85	99	452	196	176	150	95	220	02 OR 6337 06 OR 4362	N° 02 φ 85	06 NCS/R φ 85 X 3,8	Iron tube fe 520	C45	
	2V φ114					SAE 2		114	180	381	154	180	190	60	220	02 OR 6450 04 OR 201	N° 02 φ 114	04 NCS/R φ 114 X 5,8	Iron tube fe 520	C45	
			BSP & SAE PORTS																		
			1/4	1/2	3/4	1 1/4	1 1/2	2"													
	4V φ 85			2		SAE 2		85	115	451	182	198	165	90	228	02 OR 6337 05 OR 4362	N° 02 φ 85	05 NCS/R φ 85 X 3,8	Iron tube fe 520	C45	
	2V φ100					SAE 2		100	139	445	160	230	192	138	260	02 OR 189 03 OR 192	N° 02 φ 100	03 NCS/R φ 100 X 5,8	Iron tube fe 520	C45	
	5V φ100	1	2			2+2		100	125	434	294	151	260	95	175	02 OR 189 06 OR 192	N° 02 φ 100	06 NCS/R φ 100 X 5,8	Iron tube fe 520	C45	
	4V φ114		2			SAE 2		114	158	385	200	198	194	15	228	02 OR 6450 04 OR 201	N° 02 φ 114	04 NCS/R φ 114 X 5,8	Iron tube fe 520	C45	

**Hydraulic Rotary Coupling GRR 50/1 - 50/6**

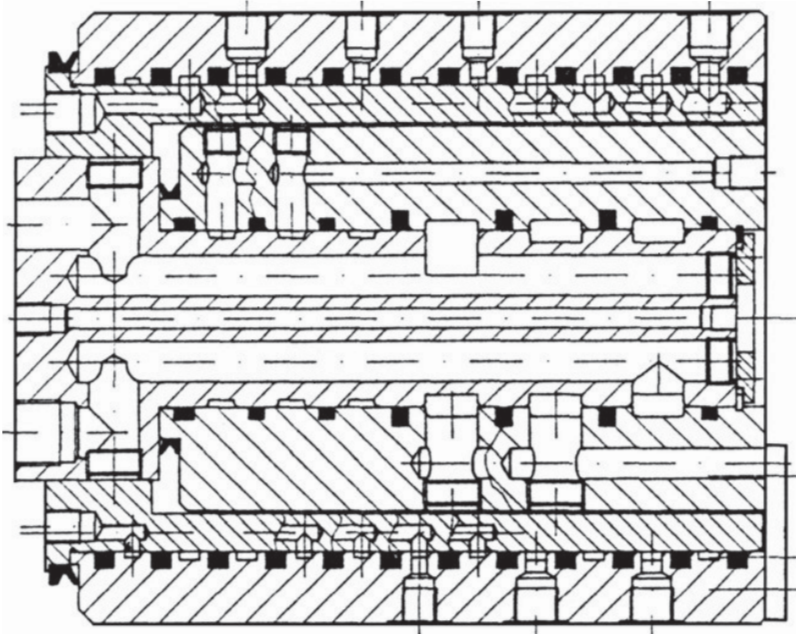


THIS MODEL MAY BE COUPLED WITH 114 DIAMETER COUPLING

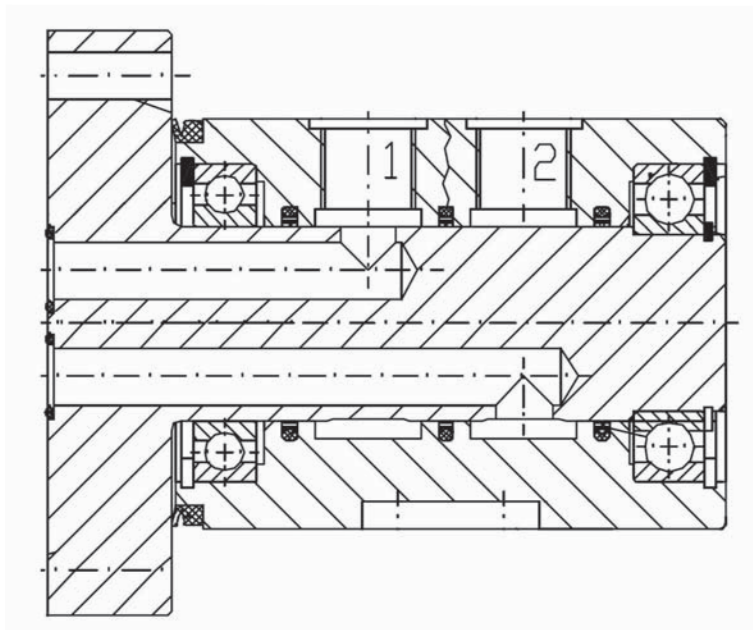
Model code	Type	Max. press. bar	BSP Ports			$\phi A$	$\phi B$	C	D	E	F	G	$\phi H$	L	M	N	Stator material	Rotor material
			1/8	1/4	3/8													
GRR	1V $\phi 50$		1			50	50	89	59	66	100	98	n°02 OR 6200	n° 02 $\phi 50$				Steel
	2v $\phi 50$		2			50	50	112	82	66	100	98	n°03 OR 6200	n° 04 $\phi 50$				Steel
	4v $\phi 50$		4			50	50	133	103	66	100	98	n°05 OR -156		n°05 LRC $\phi 49.6 \times \phi 53.8 \times 3.8$			Steel
	5 v $\phi 50$	2		3		50	50	155	125	66	110	98	n°06 OR -156		n°06 LRC $\phi 49.6 \times \phi 53.8 \times 3.8$			Steel
	6 v $\phi 50$	2		4		50	50	177	147	66	110	98	n°07 OR -156		n°07 LRC $\phi 49.6 \times \phi 53.8 \times 3.8$			Steel

**Rotary Coupling for Excavator**

- 16 passages
- Pressure up to 400 bar
- With centre bore

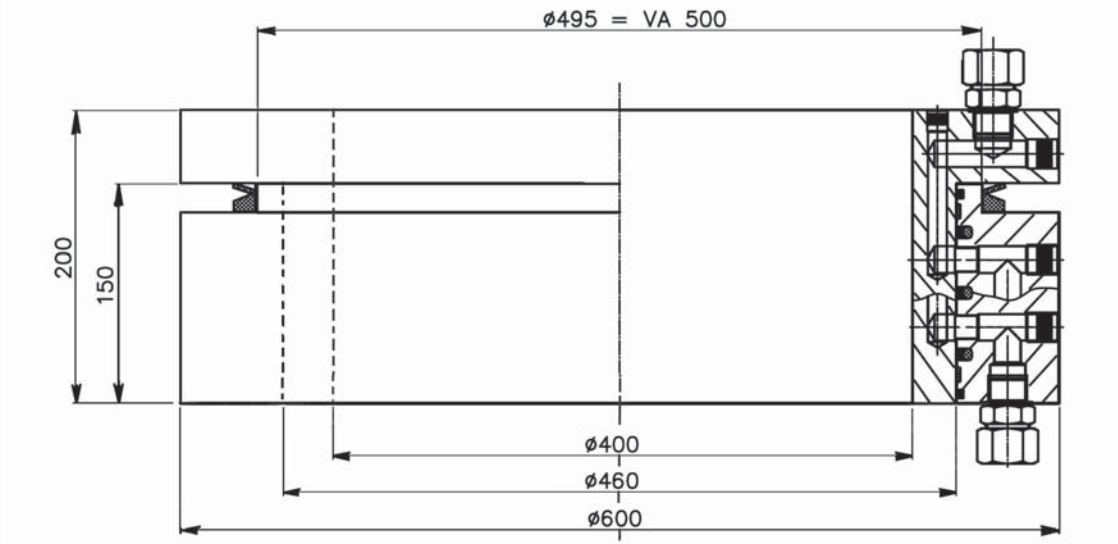
**Special Rotary Coupling for Machine Tools**

- Pressure up to 315 bar
- Speed max. 150 n / min.



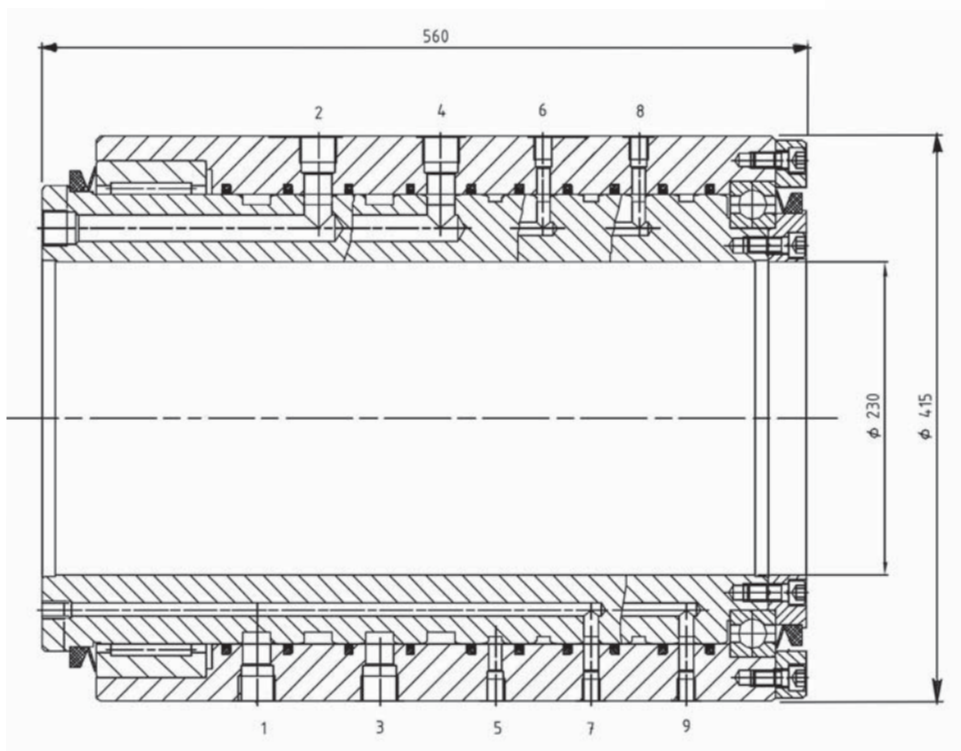
## Rotary Coupling for Pipe-Laying Machine

- Pressure up to 500 bar
- Speed up to 15 n / min.
- With centre bore 400 mm diam.



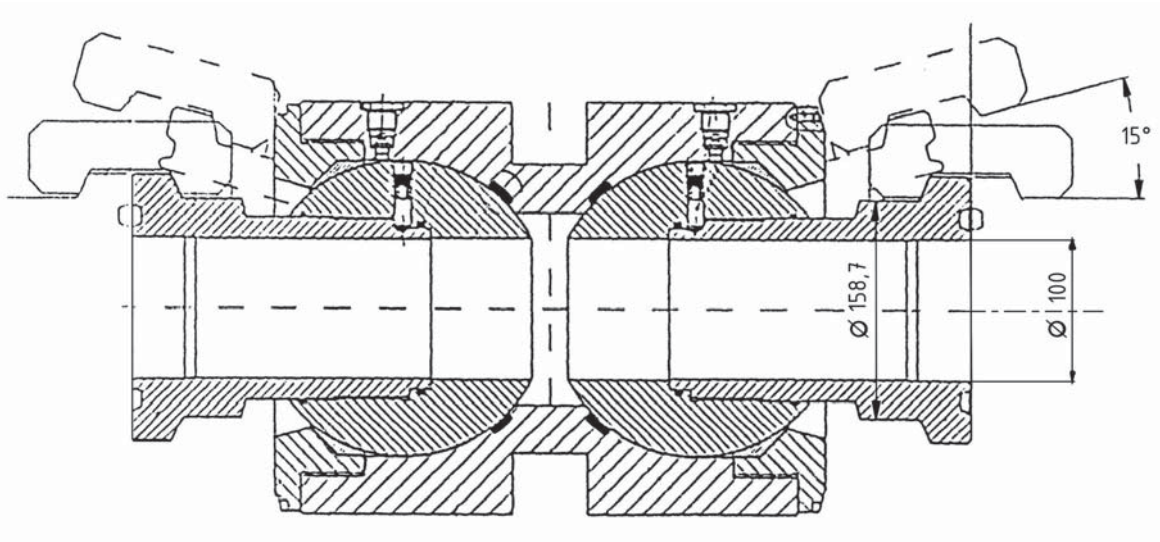
## Special Rotary Coupling for Oil Rig

- Port 1 - 4 - 3/4" BSP - Hydraulic oil - Pressure 150 bar
- Port 5 - 1/4" BSP - Separation set
- Port 6 - 9 - 1/4" BSP - Air - Pressure 8 bar
- Max. speed = 150 n / min.
- With centre bore 230 mm. diam.
- Surface finish - Chemical nickel plating



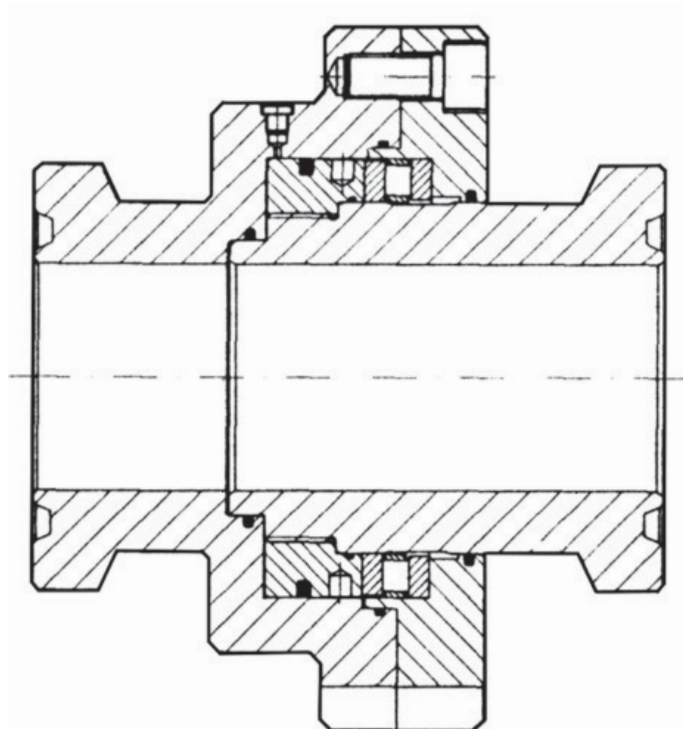
**Special Rotary Coupling for Off-Shore Applications with Ball Swivels 4"**

- Working pressure up to 550 bar
- Test pressure 800 bar
- Nominal size 100 mm.
- Rotation possibility with pressure 550 bar
- Max. angle 15° + 15°
- **Made in STAINLESS STEEL**



**Straight Hydraulic Rotary Coupling for Off-Shore Applications**

- Working pressure up to 550 bar
- Test pressure 800 bar
- Nominal size 100 mm.
- Rotation possibility with pressure 550 bar
- **Made in STAINLESS STEEL**



As HANSA-TMP has a very extensive range of products and some products have a variety of applications, the information supplied may often only apply to specific situations.

If the catalogue does not supply all the information required, please contact HANSA-TMP.

In order to provide a comprehensive reply to queries we may require specific data regarding the proposed application.

Whilst every reasonable endeavour has been made to ensure accuracy, this publication cannot be considered to represent part of any contract, whether expressed or implied.

The data in this catalogue refer to the standard product. The policy of HANSA-TMP consists of a continuous improvement of its products. It reserves the right to change the specifications of the different products whenever necessary and without giving prior information.



---

Dutch Hydraulic Consultants BV	Tel. : +31-(0)6-83695868
Achterweg ZZ 8	Mail : <a href="mailto:info@dhc-hydraulic.nl">info@dhc-hydraulic.nl</a>
3216 AB Abbenbroek	Web : <a href="http://www.dhc-hydraulic.nl">www.dhc-hydraulic.nl</a>
Nederland	