



Certified ISO 9001 and 14001



HYDRAULIC CYLINDERS WITH PUMP



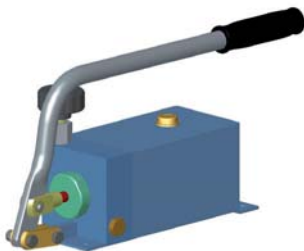
GL



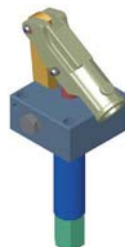
GLA



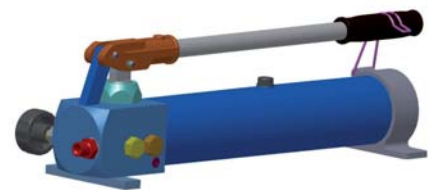
GL2 CN



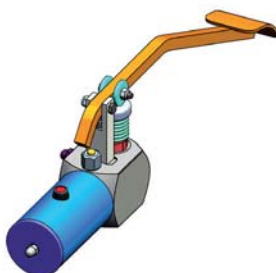
GLDE



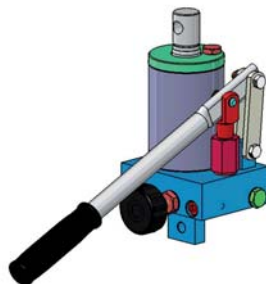
GL 277



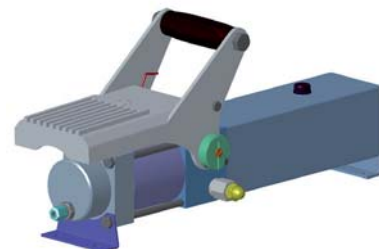
GL2P/Q



GLAPN



GTE



GLOP

Hydraulic Hand Pumps

This catalogue is published by:

HANSA-TMP S.r.l.
Via Martin Luther King, 6
41122 Modena (MO)
Italy

Issue n° **HT 20 / A / 309 / 0912 / E** (Replaces all previous edition)

COPYING AND TRASLATION. EVEN OF EXTRACTS, ONLY WITH PRIOR WRITTEN PERMISSION OF THE PUBLISHER. ALL RIGHTS RESERVED. SUBJECT TO REVISION.

The specific data are for product description purposes only and must not be interpreted as warranted characteristics in legal sense.

Protection: external protection is generally with painting RAL 5015 (Blue), on liquid base for models with tank, while epoxy powder for models with cast iron housing.

Aluminium parts are anodized

Lever parts and others is partially zinc-coated.

Special protection are possible on request.

ASSEMBLY, COMMISSIONING AND MAINTENANCE OF THE PRODUCTS DESCRIBED IN THIS CATALOGUE:

SEE HANDBOOK

The main performance curves and the specifications shown in this catalogue are obtained by using mineral based fluid ISO VG 46, with cleanliness class of 17/15/12 ISO 4406 (Class 7 NAS 1638) at a temperature of 50°C.

HYDRAULIC FLUIDS:

General properties:

The fluid must have physical lubricating and chemical properties suitable for use in hydraulic systems, such as, for example:

MINERAL OIL BASED HYDRAULIC FLUIDS HL (DIN 51524 part 1)

MINERAL OIL BASED HYDRAULIC FLUIDS HLP (DIN 51524 part 2)

For use of other fluids, environmentally friendly fluids or fire resistant fluids, please consult our Tech. Dpt.

Applications



Culvert cover lifter



Airport ground support equipment

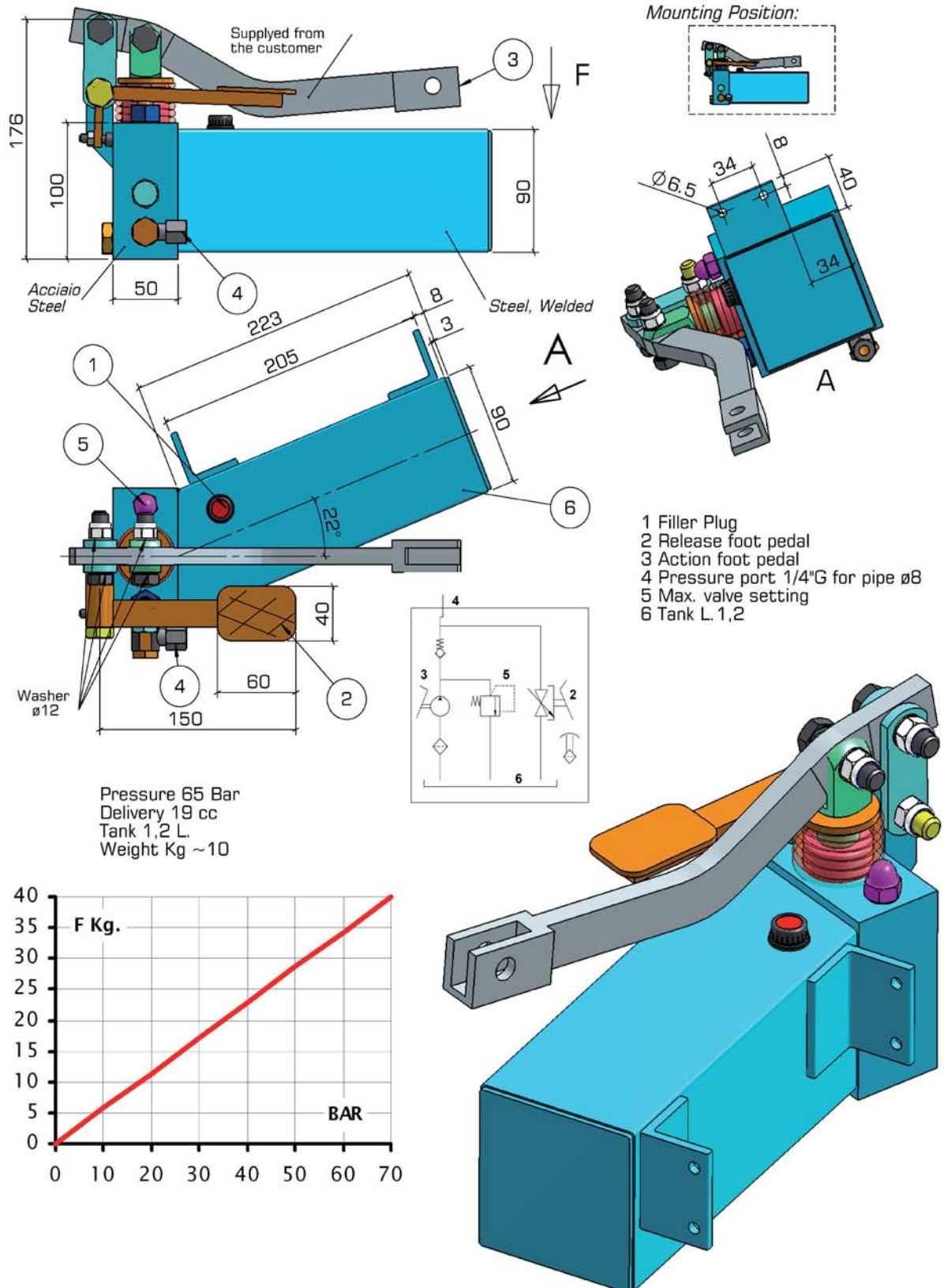
Concrete truck mixer



Furniture press

Hydraulic Pedal Pump Type GL 219

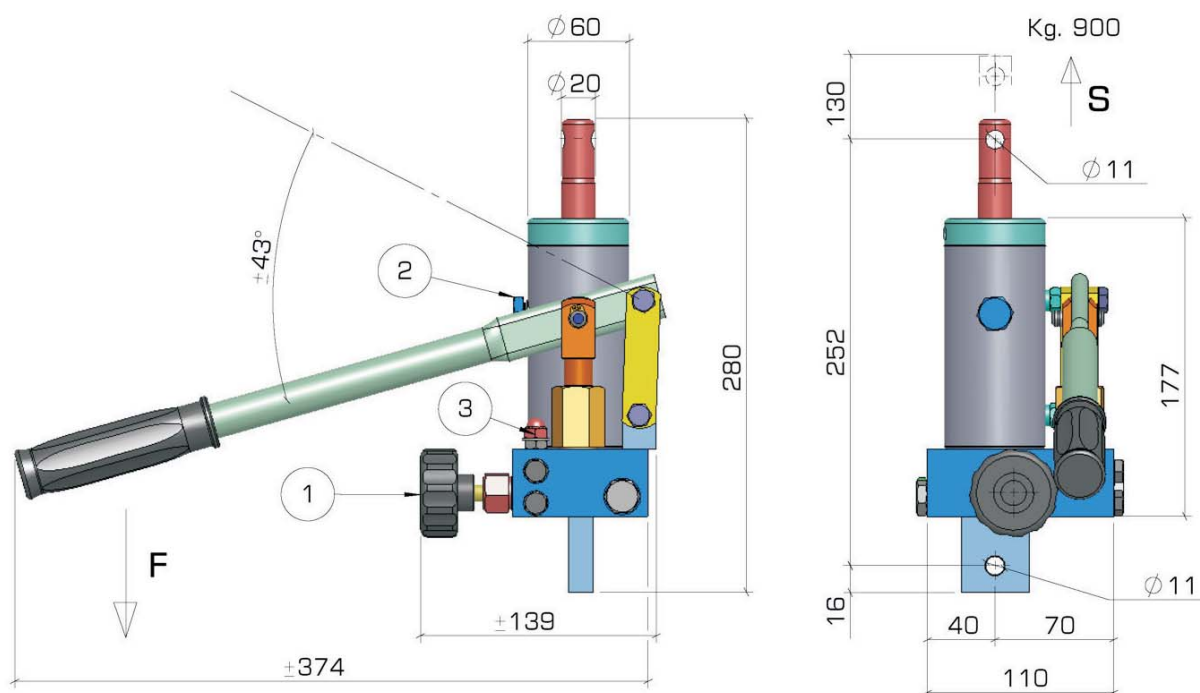
Single acting function pedal pump with relief valve and release foot pedal for single acting cylinder



Dimensions and characteristics not binding. Modifications reserved without prior notice.

Hydraulic Pump Type GL 12 C

Single acting function pump with built-in single acting cylinder



Weight (with oil) kg. ~6

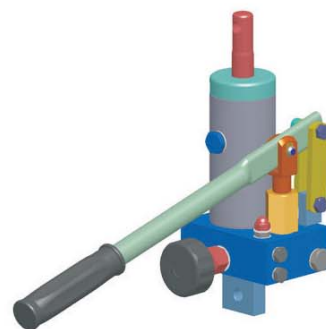
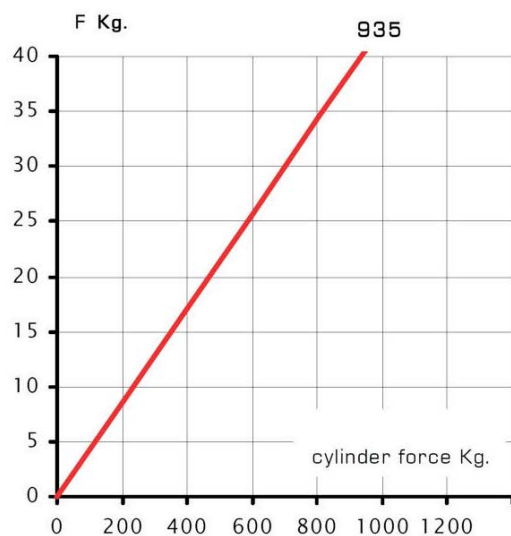
Force S Kg. 900

Rod-Stroke per pumping Action mm12

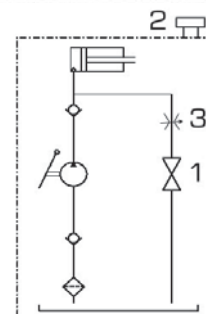
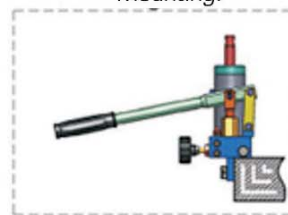
1 Release Handknob

2 Filler Plug

3 Pressure release setting



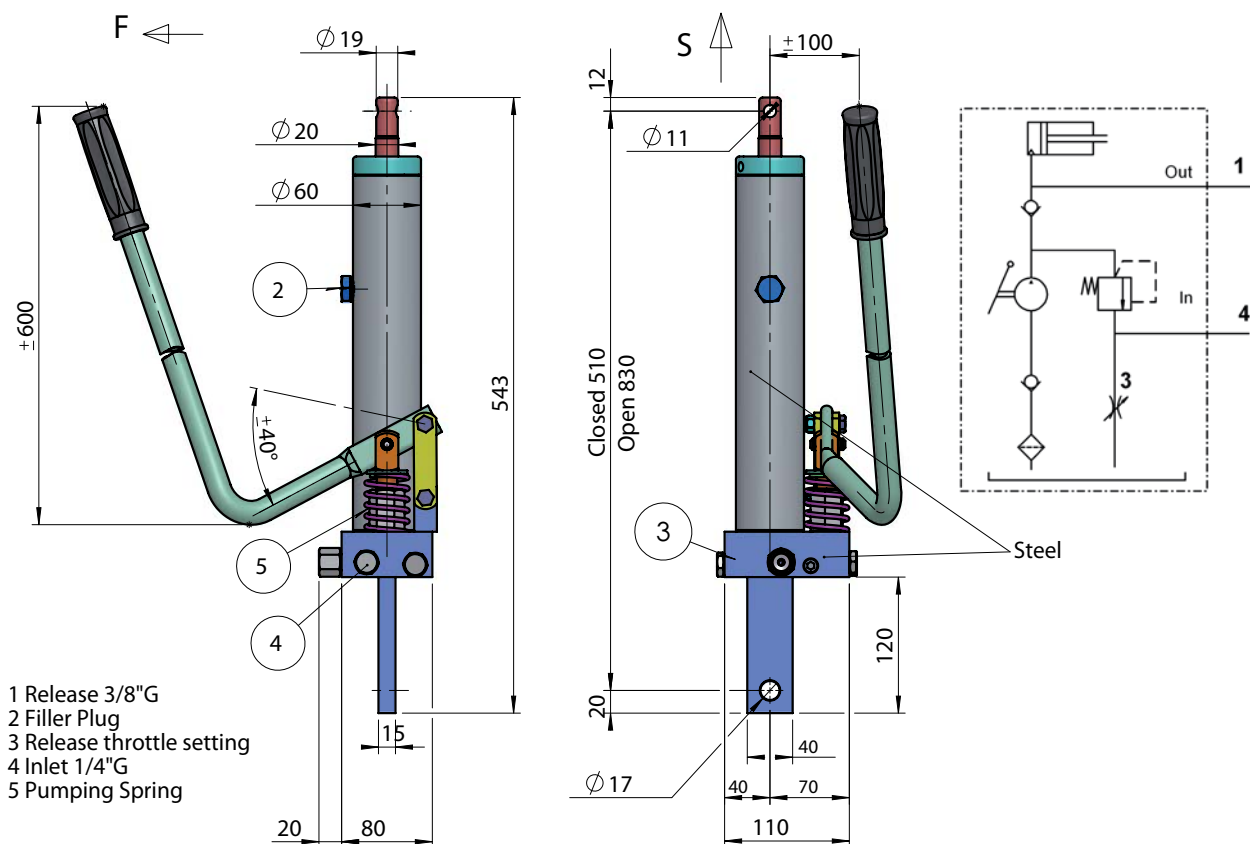
Mounting:



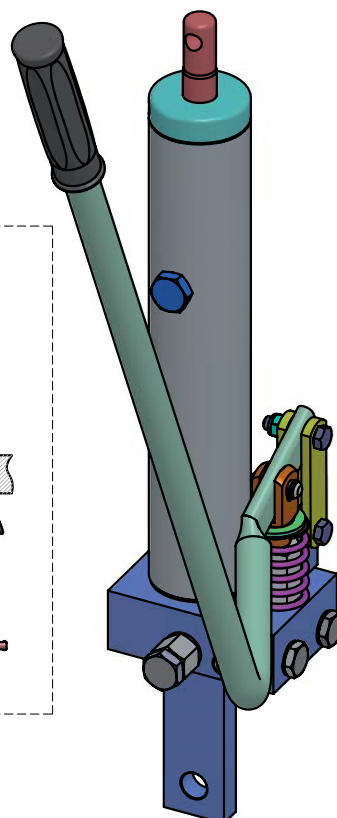
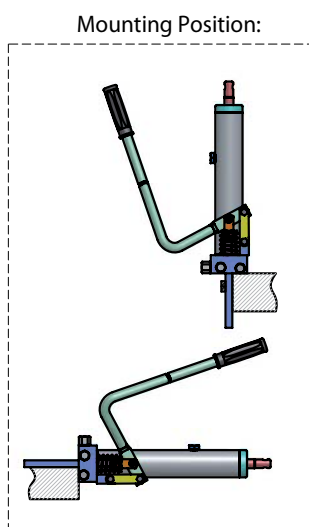
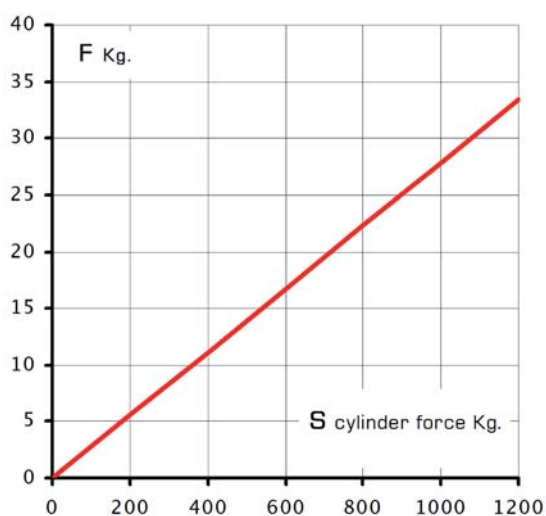
Dimensions and characteristics not binding. Modifications reserved without prior notice.

Hydraulic Pump Type GL 12 C-320 SR

Single acting function pump with built-in single acting cylinder



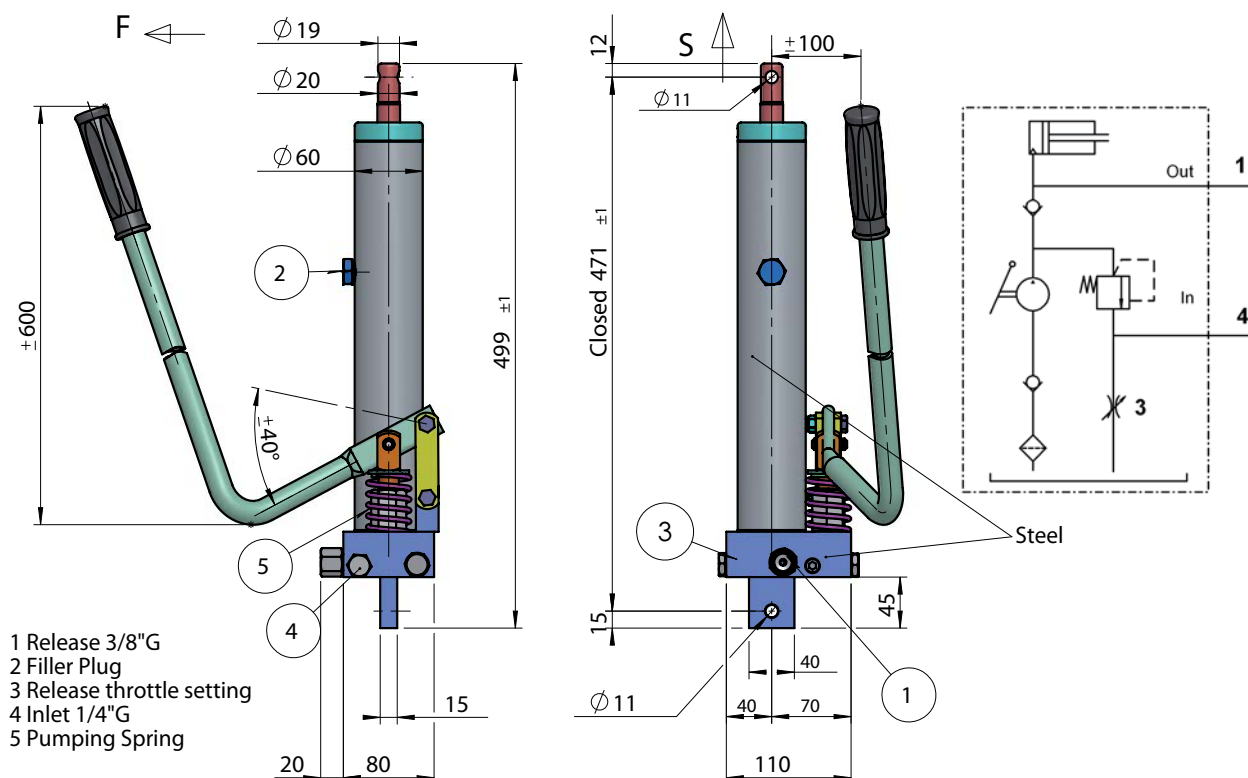
Code	Stroke	Stroke/Hit	Force S	Weight
GL12C-320SR	320 mm	12 mm	~500 Kg	~8.5 Kg



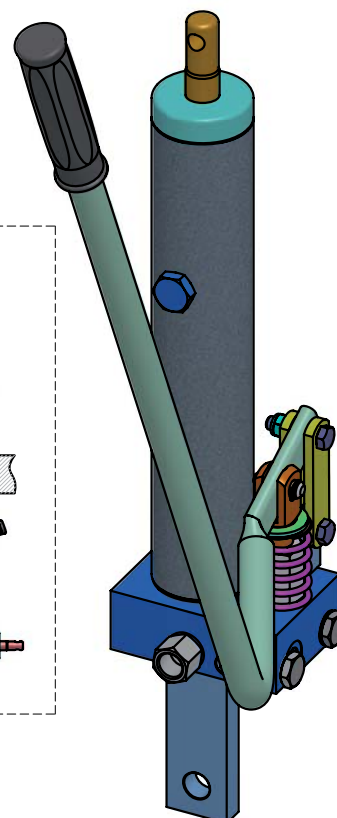
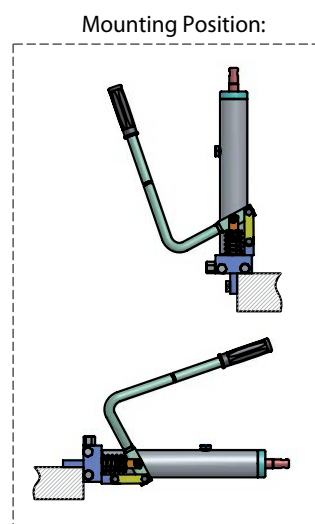
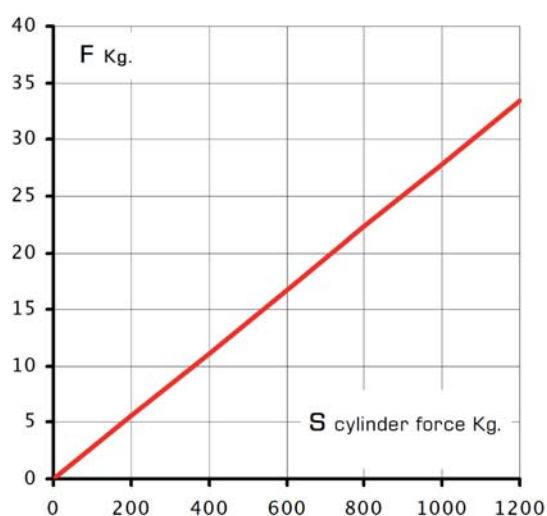
Dimensions and characteristics not binding. Modifications reserved without prior notice.

Hydraulic Pump Type GL 12 C-350 SR

Single acting function pump with built-in single acting cylinder



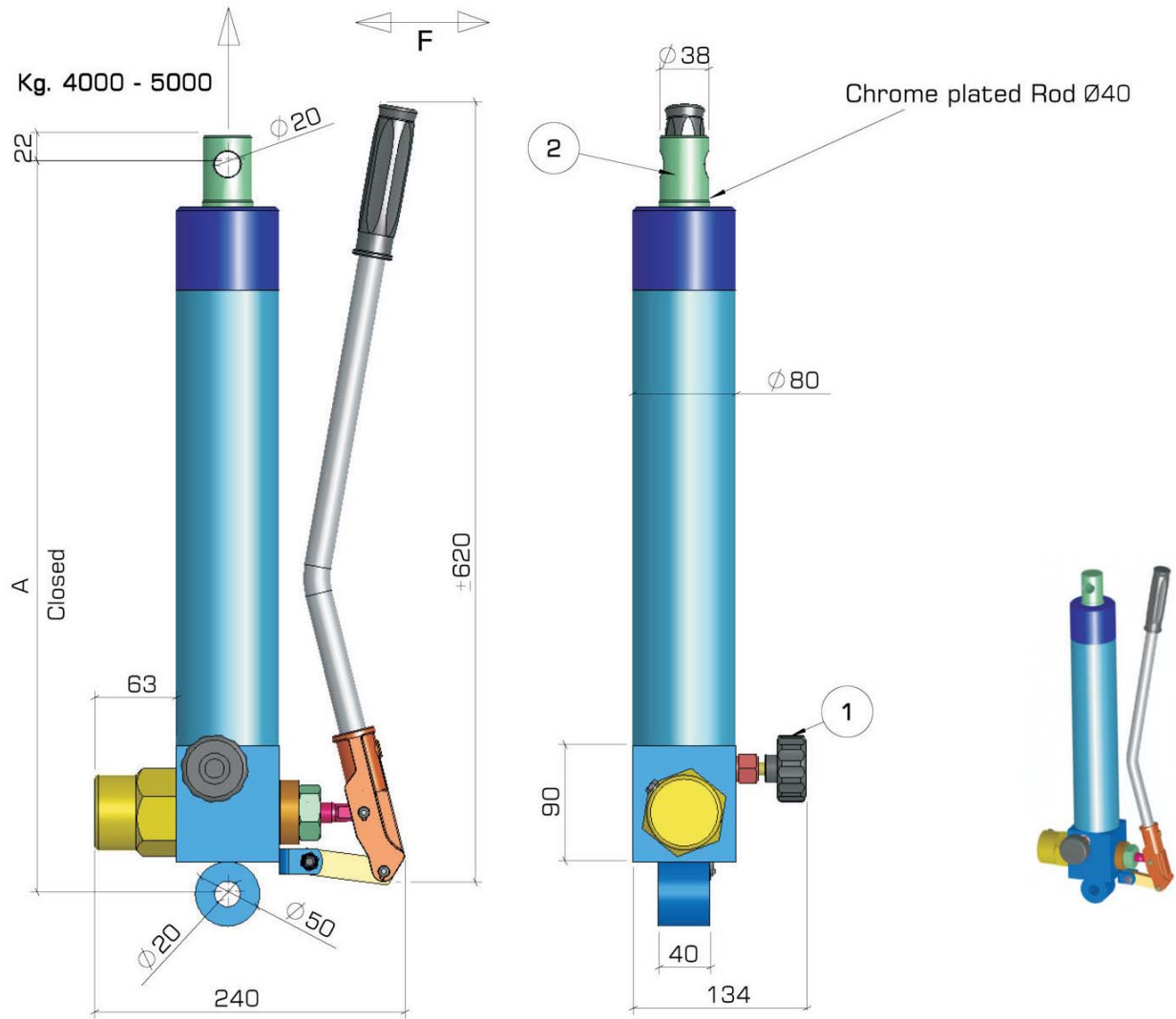
Code	Stroke	Stroke/Hit	Force S	Weight
GL12C-350SR	350 mm	12 mm	~500 Kg	~9,0 Kg



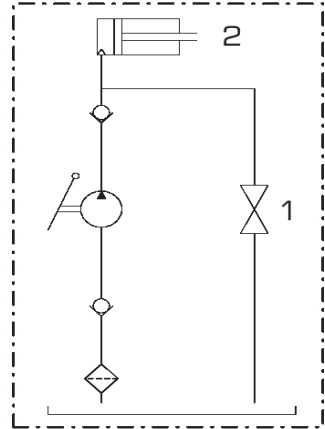
Dimensions and characteristics not binding. Modifications reserved without prior notice.

Hydraulic Pump Type GL 21 C 40

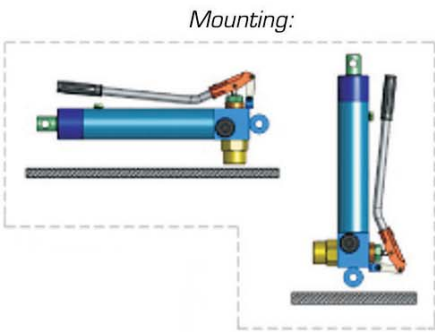
Double acting function pump with built-in single acting cylinder



TIP TYPE	Cylinder Stroke mm	A	Weight kg.
GL21C40-305	305	560	13.2
GL21C40-600	600	833	26



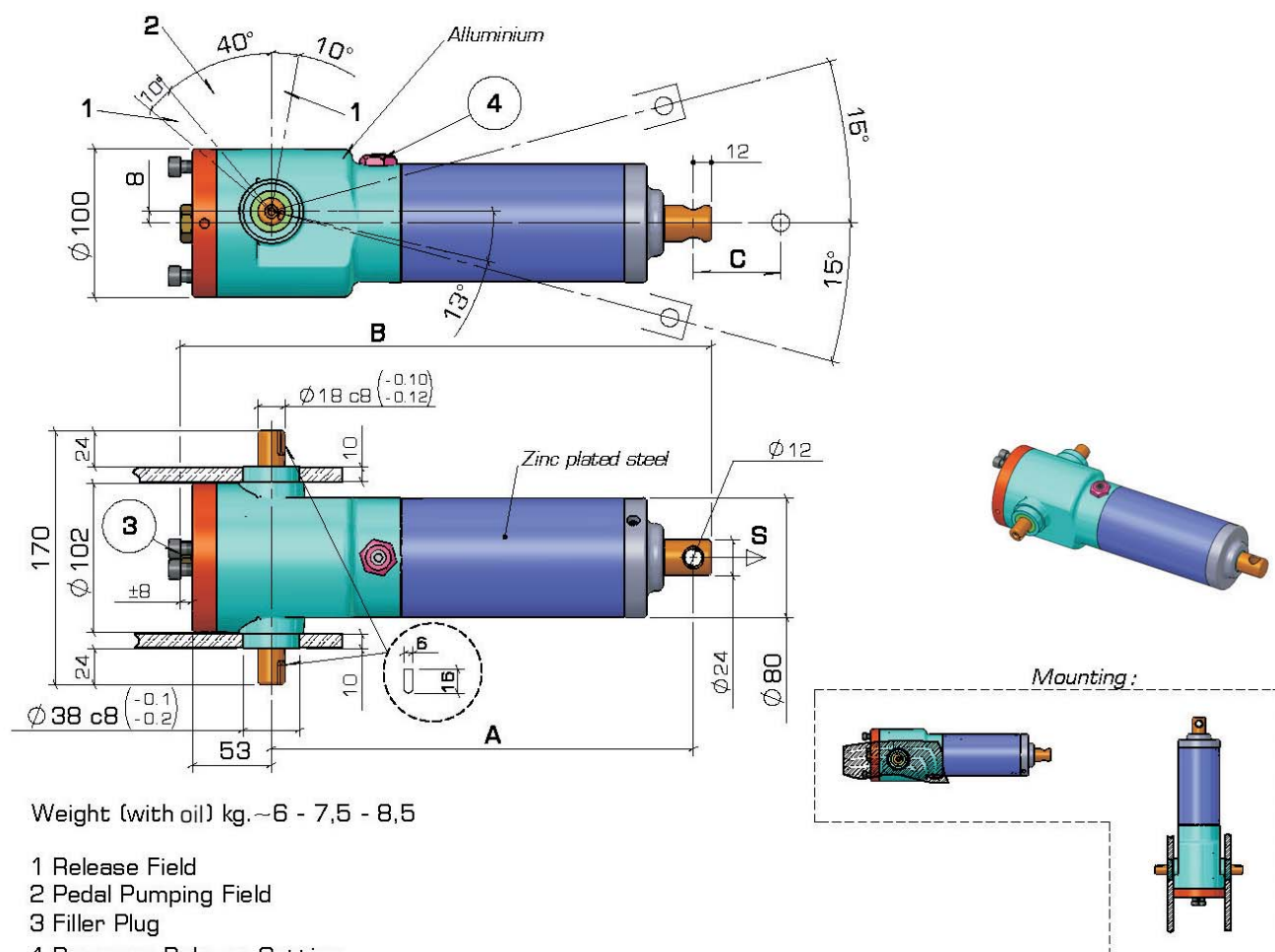
- 1 Release Handknob
2 Piston Rod Ø 40
Rod-Stroke per pumping action mm 12



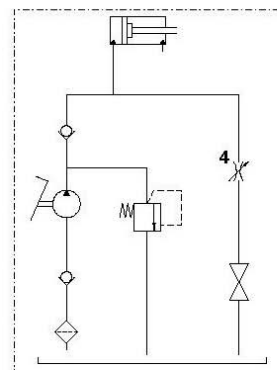
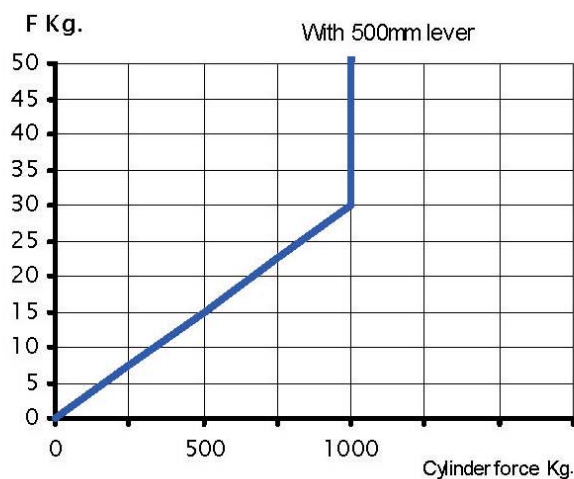
Dimensions and characteristics not binding. Modifications reserved without prior notice.

Hydraulic Pump Type GL 24 C

Single acting function pump with built-in single acting cylinder



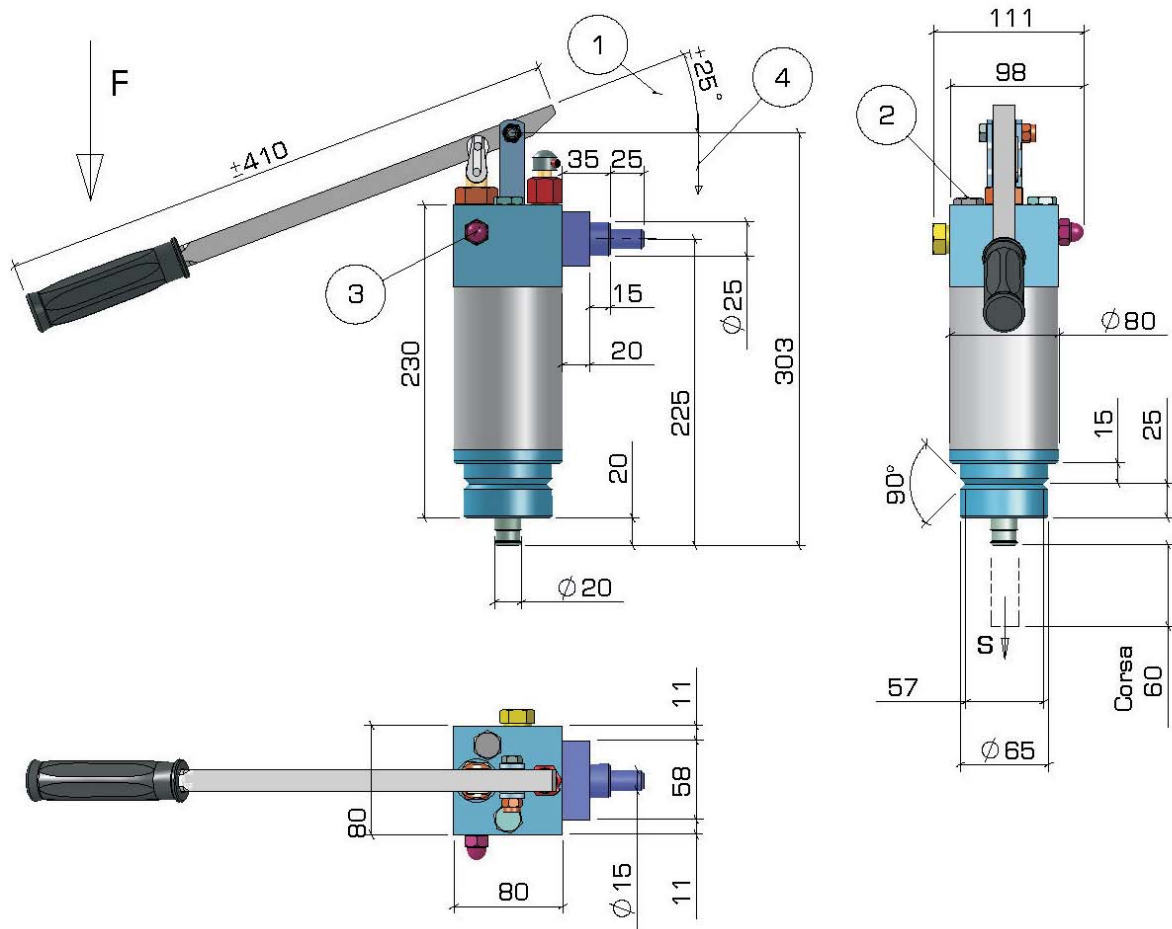
TYPE	CYLINDER STROKE mm	STROKE x CYCLE mm	FORCE S Kg.	B	A
GL24C-135	135	8	980	351	278
GL24C-200	200	8	980	420	347
GL24C-284	284	8	980	504	431



Dimensions and characteristics not binding. Modifications reserved without prior notice.

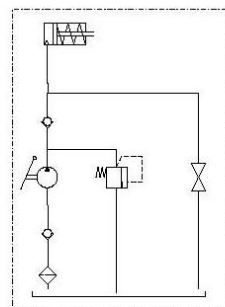
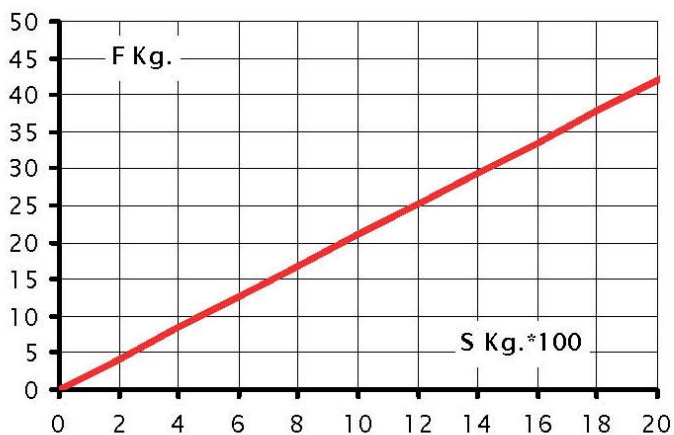
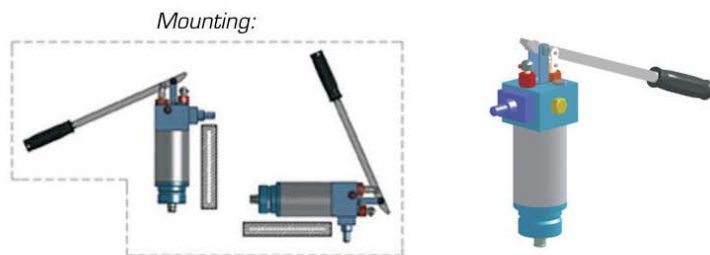
Hydraulic Pump Type GLT 10

Single acting function pump with built-in single acting cylinder with spring return



Weight (with oil) Kg. ~8
Force Max. 2000 Kg.

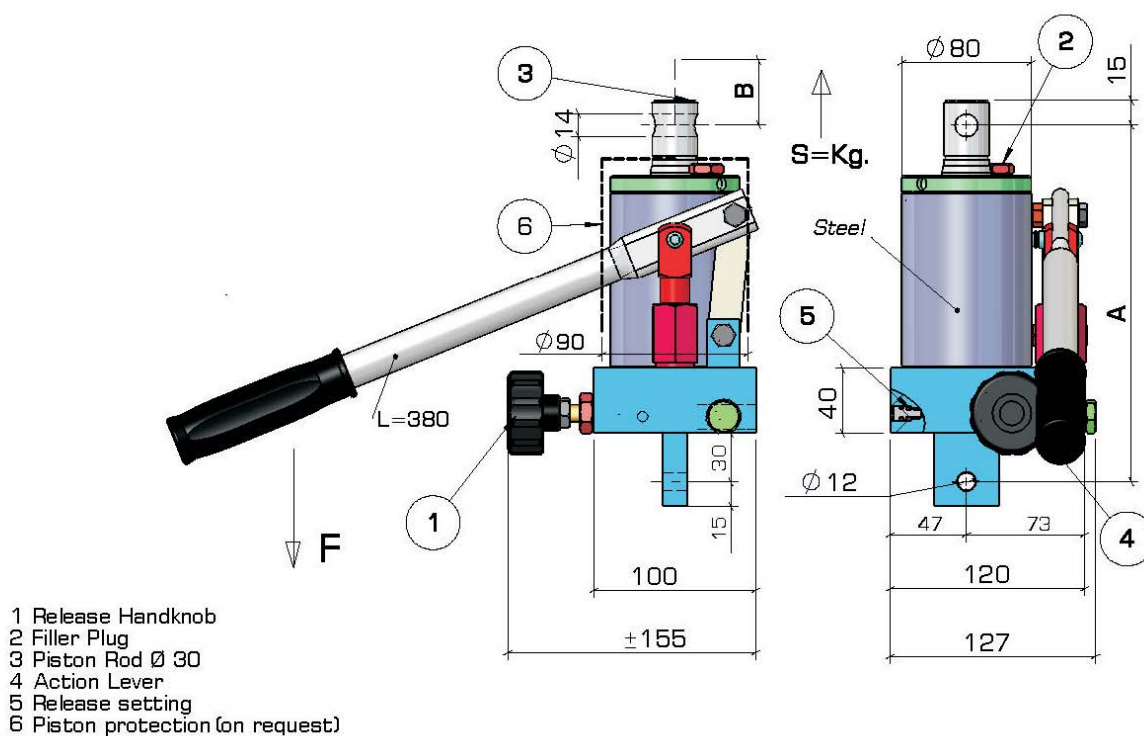
- 1 Lever action field
- 2 Oil Charge-Plug Without Breather
- 3 Max. Pressure Setting
- 4 Release Hanknob



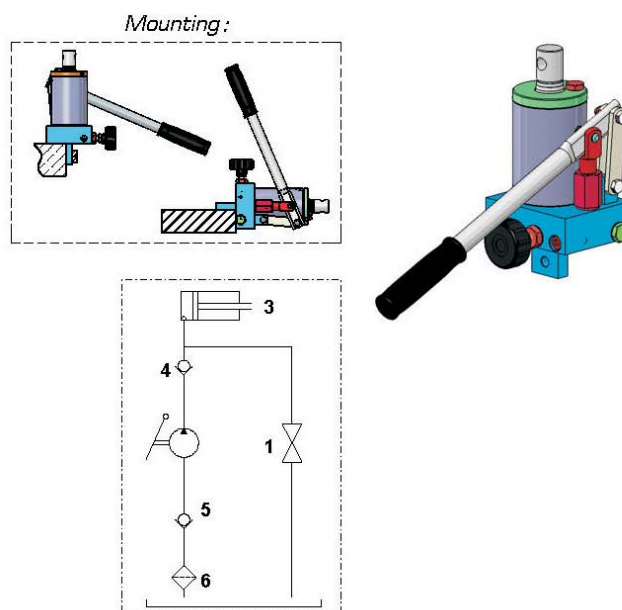
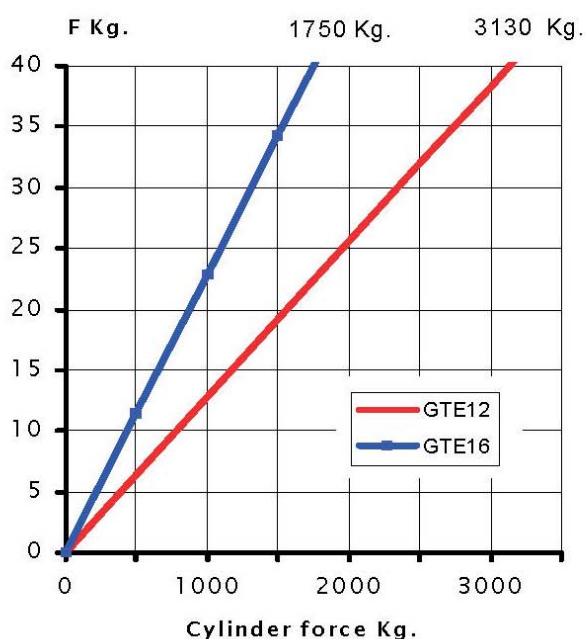
Dimensions and characteristics not binding. Modifications reserved without prior notice.

Hydraulic Pump Type GTE

Single acting function pump with built-in single acting cylinder



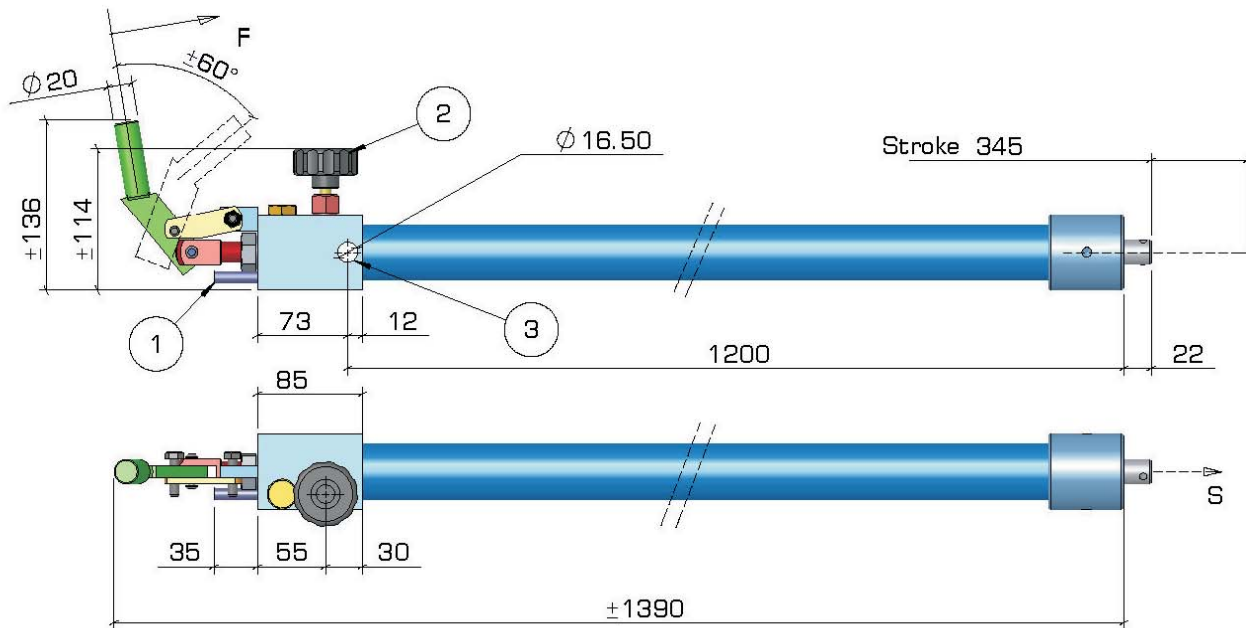
TYPE	B CYLINDER STROKE [mm]	STROKE * CYCLE [mm]	CYLINDER FORCE S [Kg]	A	WEIGHT [Kg]
GTE12-100	100	5	3100	220	~9
GTE12-200	200	5	3100	320	~13
GTE16-100	100	9	1700	220	~9
GTE16-200	200	9	1700	320	~13



Dimensions and characteristics not binding. Modifications reserved without prior notice.

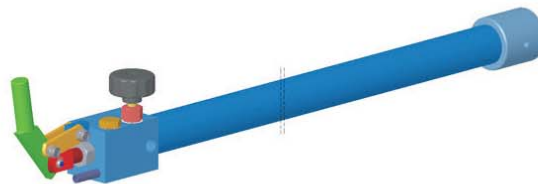
Hydraulic Pump Type GL 177 M

Single acting function pump with built-in single acting cylinder

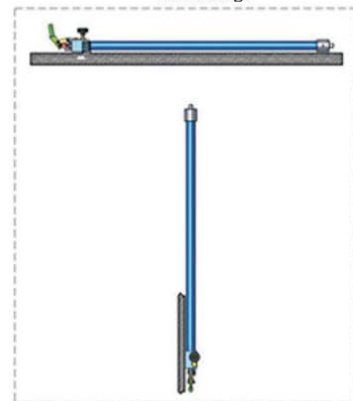


Delivery 4cc
Cylinder Stroke 345mm
Pressure 600Bar, cylinder force S 5700Kg.
Rod-stroke per pumping action: 4mm

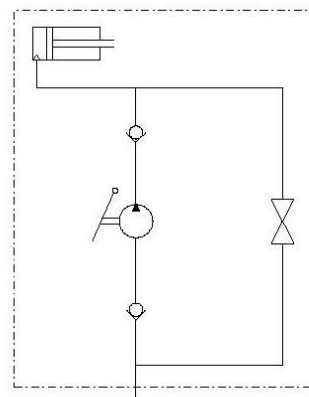
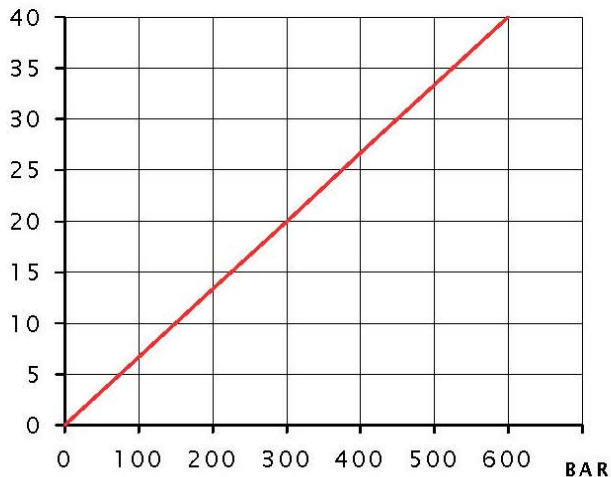
- 1 Suction
- 2 Release handknob
- 3 Mounting hole



Mounting:



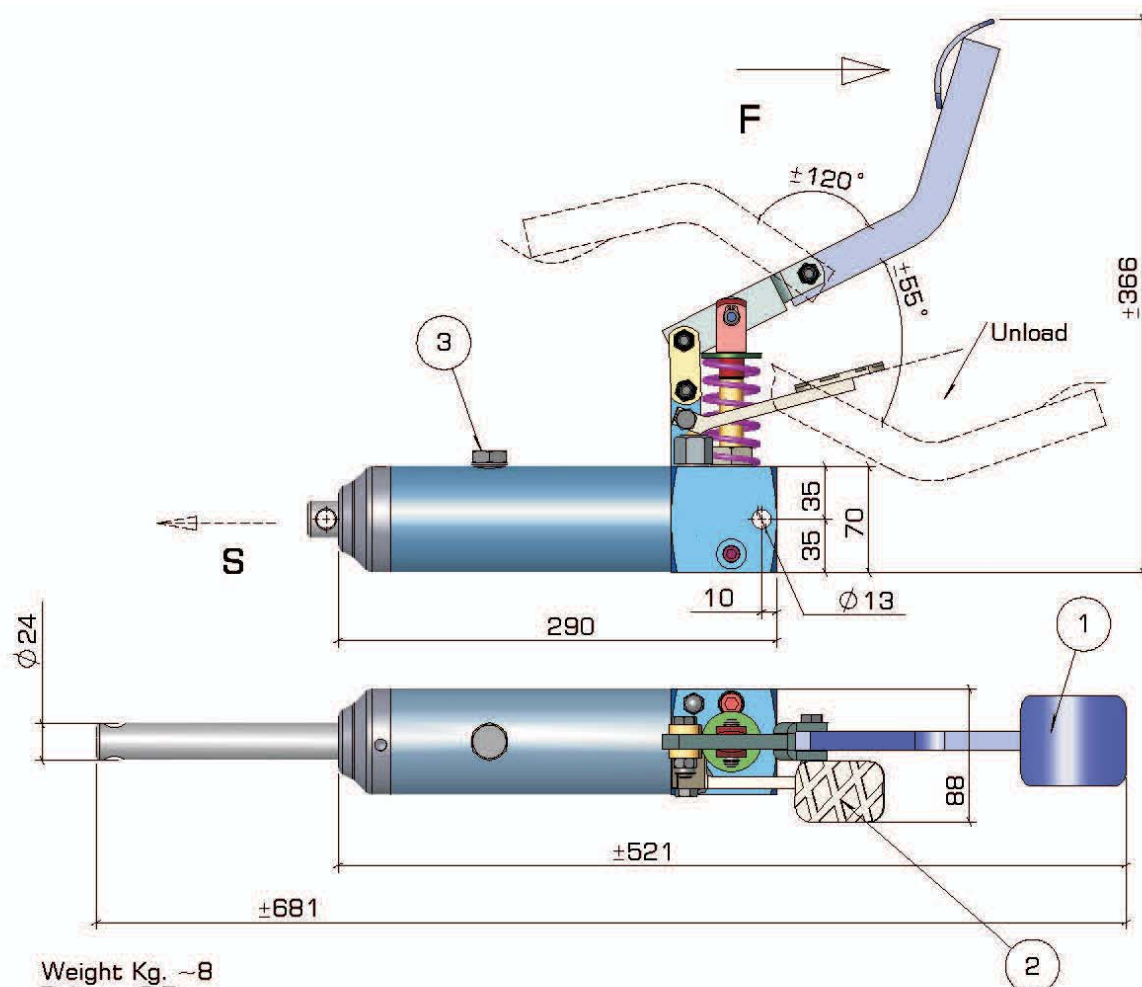
F Kg. 700mm Lever



Dimensions and characteristics not binding. Modifications reserved without prior notice.

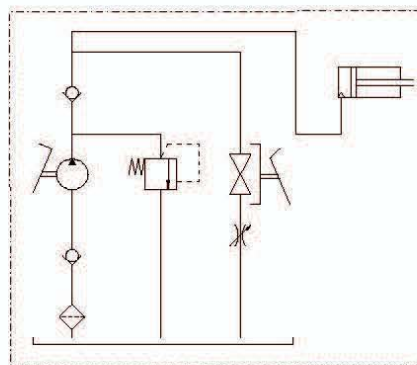
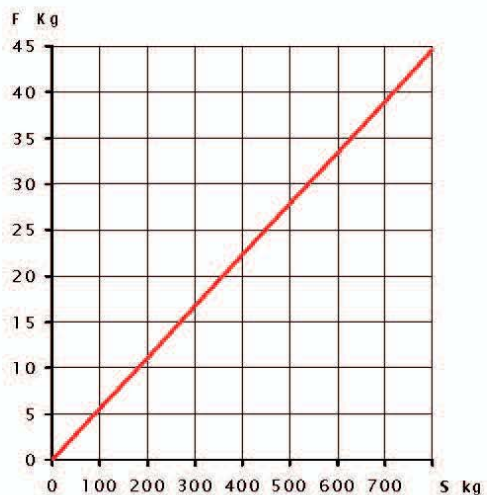
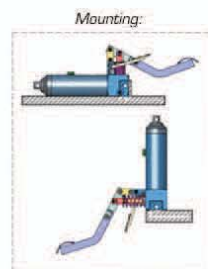
Hydraulic Pump Type GL 224

Single acting function pedal pump with built-in single acting cylinder



Weight Kg. ~8
Delivery 6,5 cc
Pressure 150 Bar
Stroke 150mm
Force ~700Kg

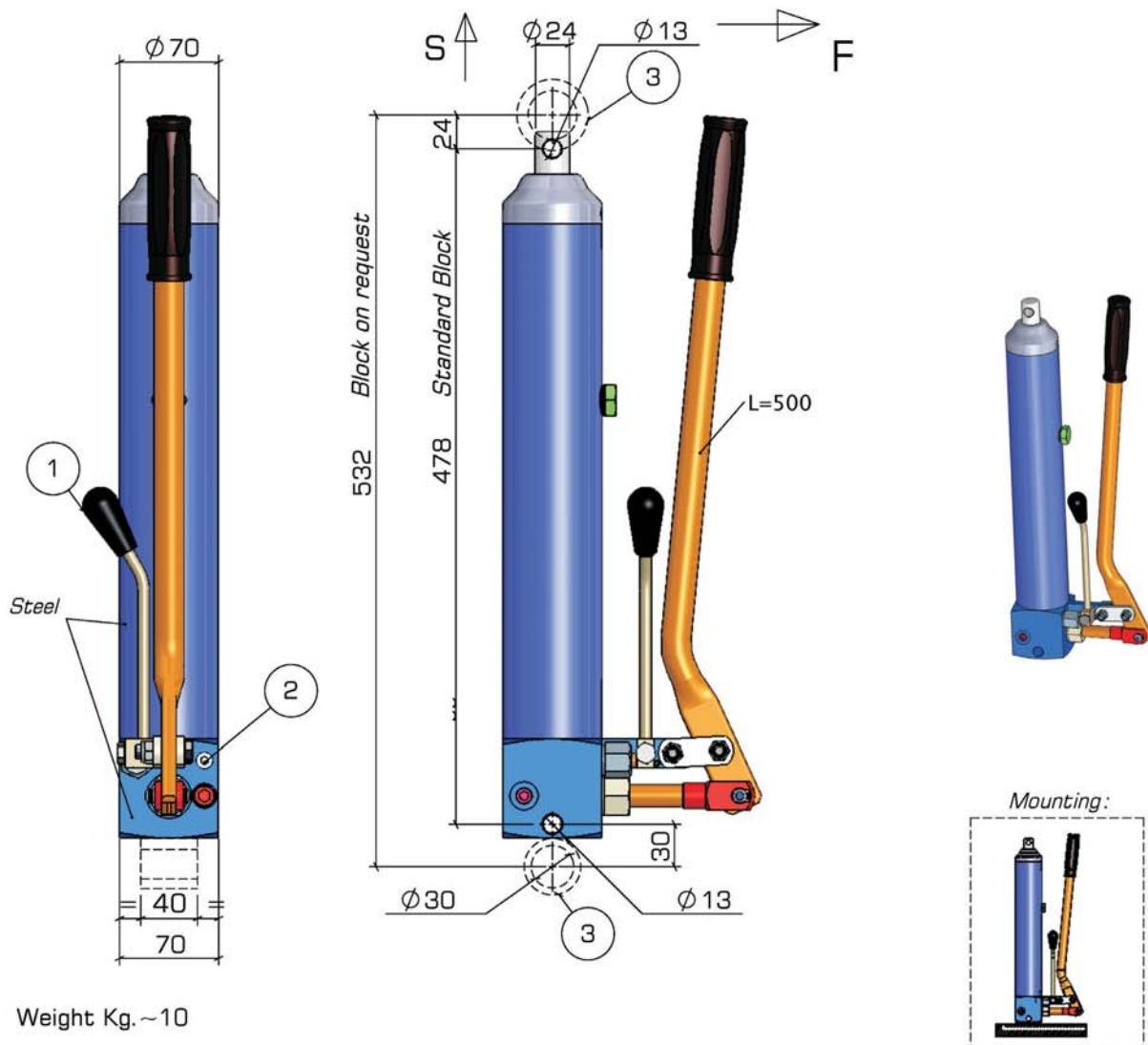
- 1 Foot Pedal
- 2 Unload Foot Pedal
- 3 Filler Plug
- 4 Mounting hole



Dimensions and characteristics not binding. Modifications reserved without prior notice.

Hydraulic Pump Type GL 229-330

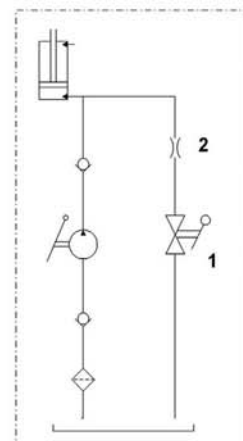
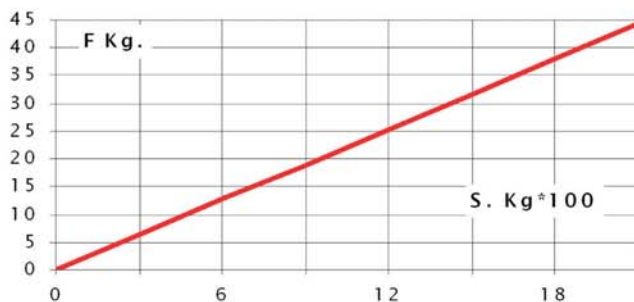
Single acting function pump with built-in single acting cylinder



Weight Kg. ~10

- 1 Release Lever
- 2 Release Setting throttle
- 3 Mounting eye (on request)

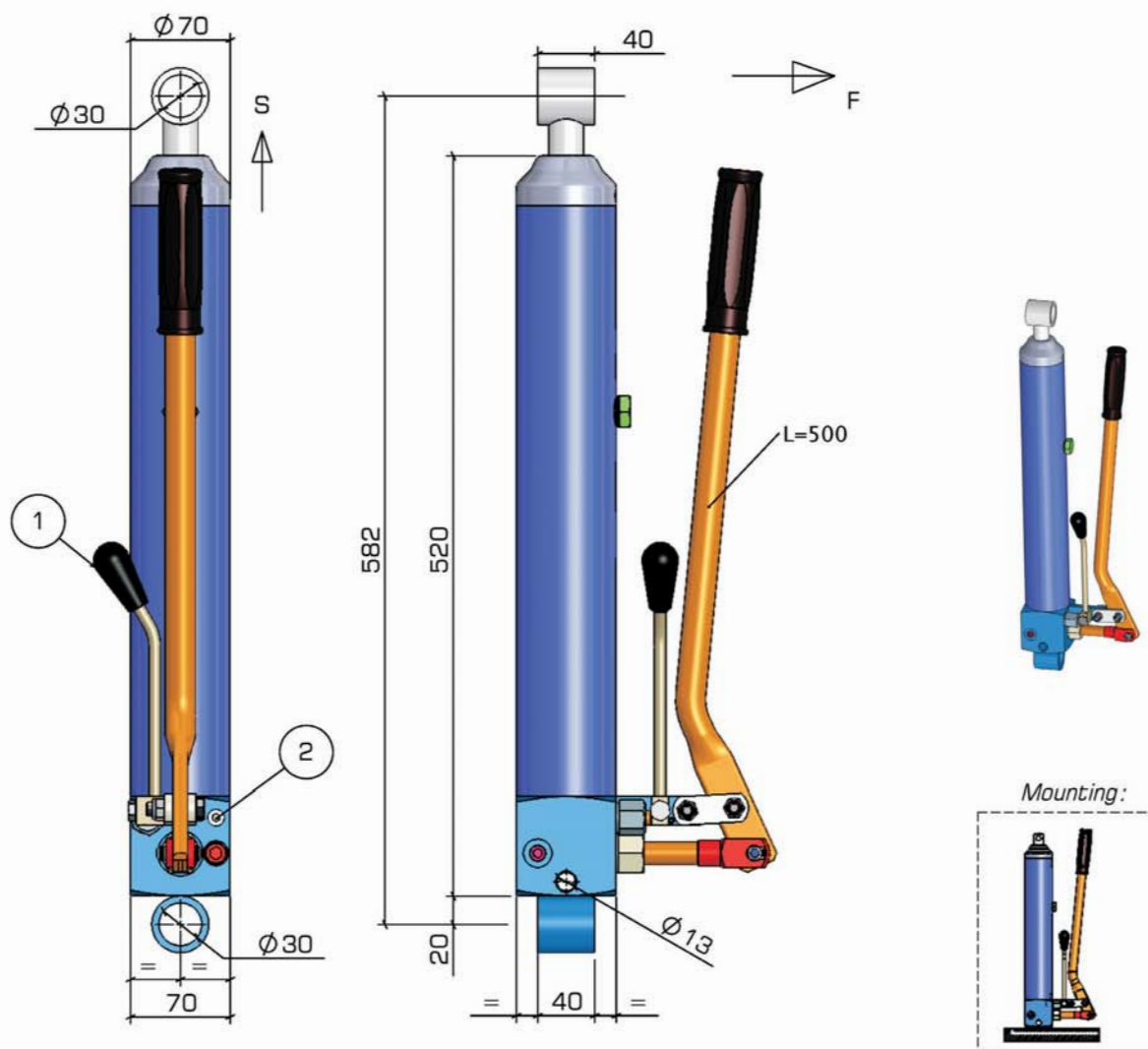
Standard Stroke 330mm
Rod-Stroke Per Pumping Action 8 mm
Force S ~ 2000Kg



Dimensions and characteristics not binding. Modifications reserved without prior notice.

Hydraulic Pump Type GL 229-380

Single acting function pump with built-in single acting cylinder



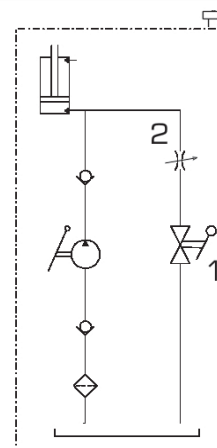
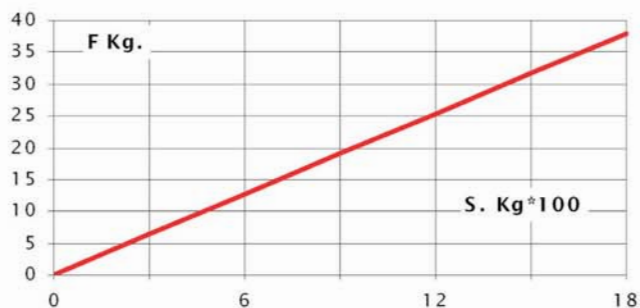
Weight Kg. ~11

1 Release Lever

2 Pressure Release Setting

Standard Stroke 380mm

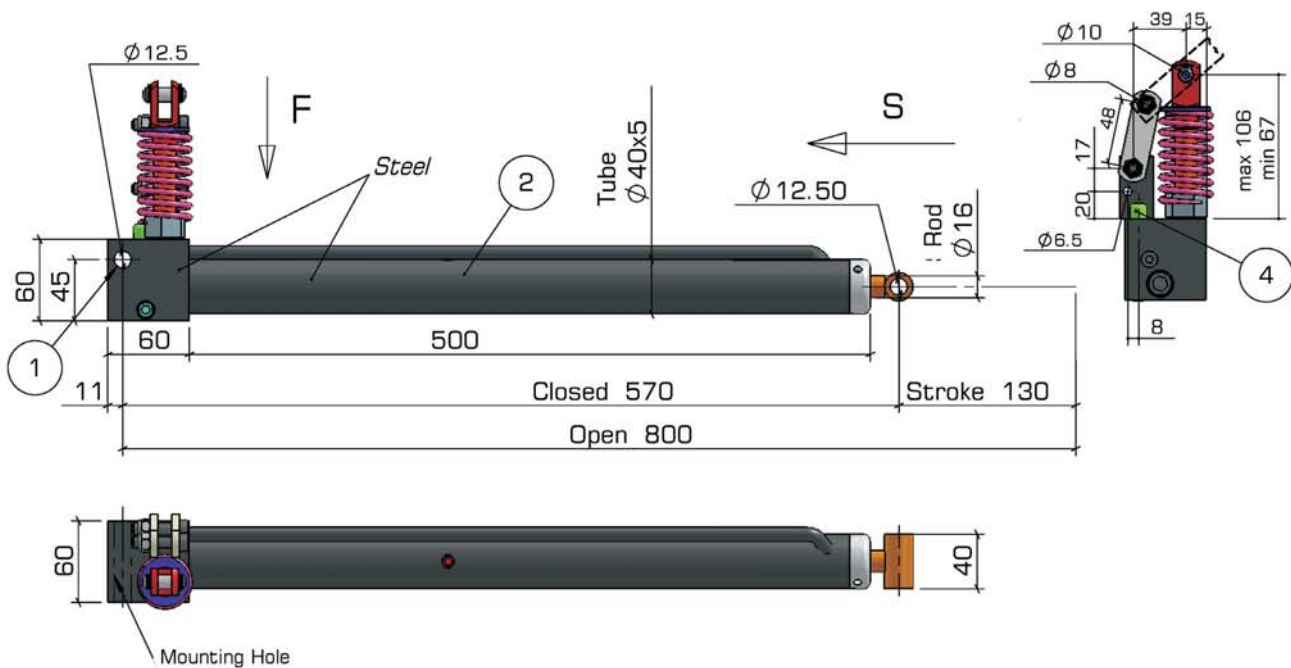
Rod-Stroke Per Pumping Action 8 mm



Dimensions and characteristics not binding. Modifications reserved without prior notice.

Hydraulic Pump Type GL 239

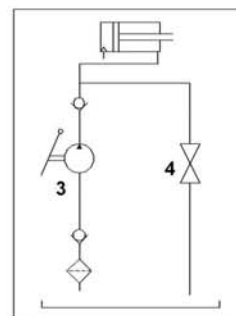
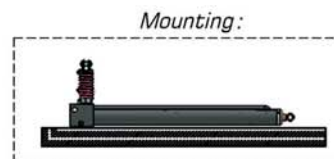
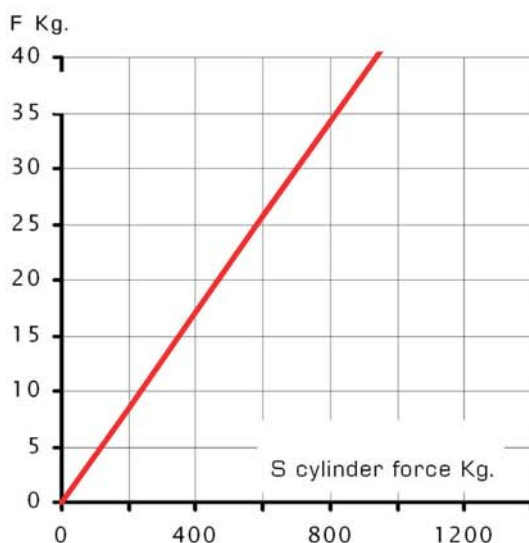
Foot Pedal Single acting function pump with built-in single acting cylinder



Weight Kg. 6
Traction cylinder
Rod stroke per hit: ~10mm
Total N° of hit for complete stroke: 24-25

- 1 Mounting Hole
- 2 Filler Plug (without breath)
- 3 Action Piston *
- 4 Release Pin *

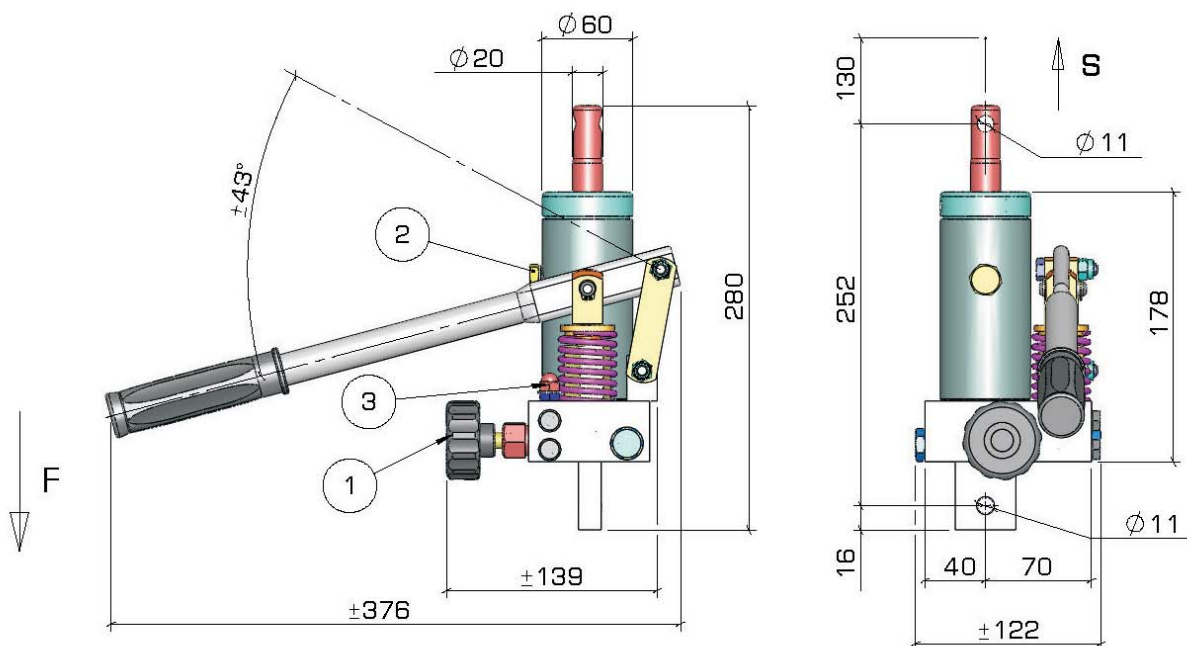
* Action lever and release lever are not supplied.



Dimensions and characteristics not binding. Modifications reserved without prior notice.

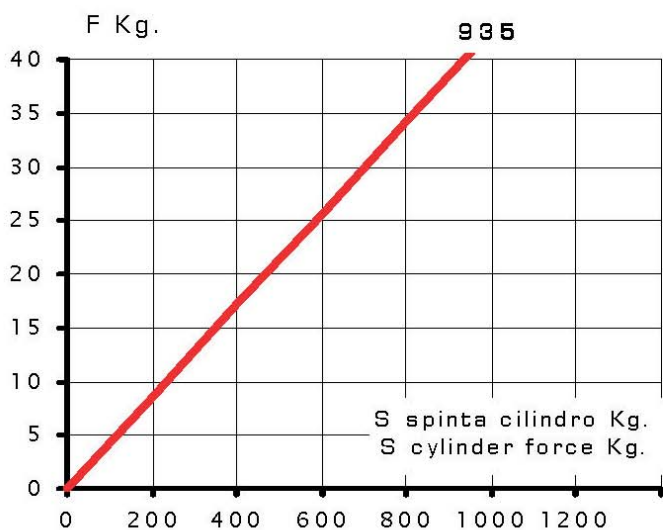
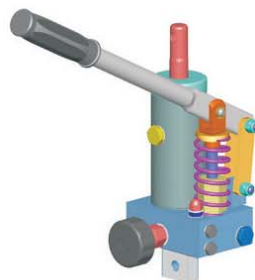
Hydraulic Pump Type GL 243

Single acting function pump with built-in single acting cylinder



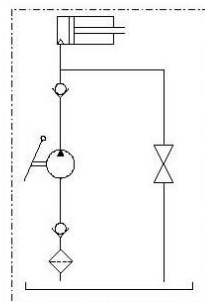
Weight kg. ~ 6
S=Force Kg. 900
Rod-Stroke per pumping Action mm 12

- 1 Release Handknob
- 2 Filler Plug
- 3 Pressure release setting



Mounting:

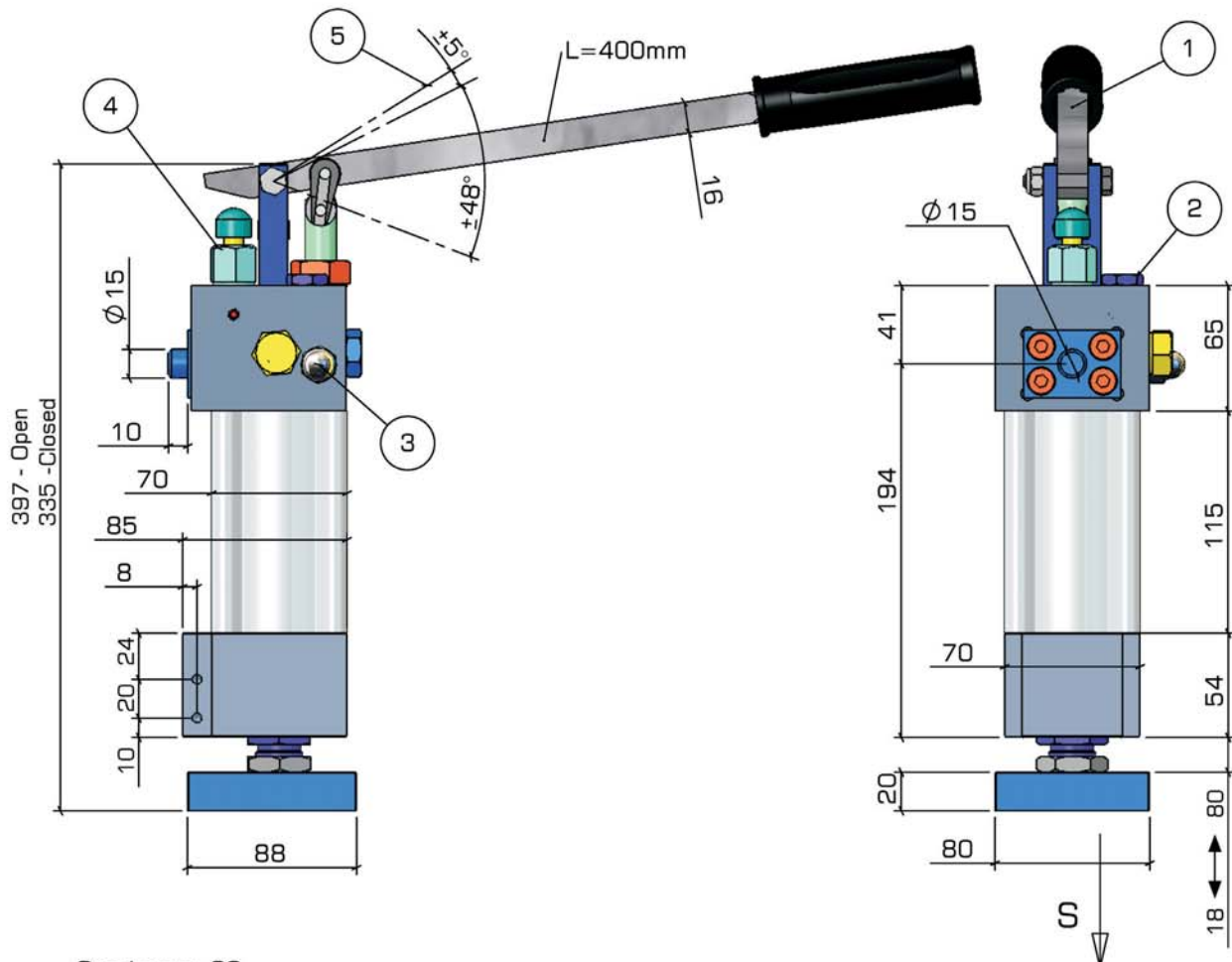
Only as dwg



Dimensions and characteristics not binding. Modifications reserved without prior notice.

Hydraulic Pump Type GL 247

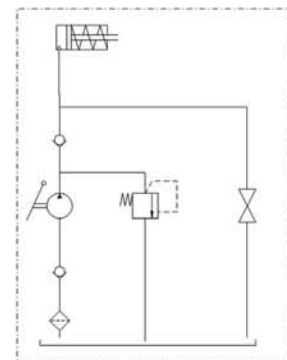
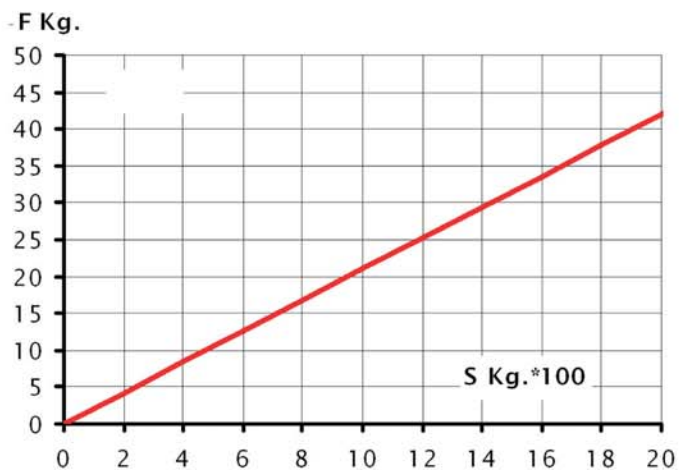
Single acting function pump with built-in spring return single acting cylinder



Stroke mm 62
Weight (with oil) Kg. ~5.5
Force Max. 2000 Kg.
Rod-stroke per cycle: 0.5mm

- 1 Action lever
- 2 Filler Plug
- 3 Relief valve setting
- 4 Release Valve

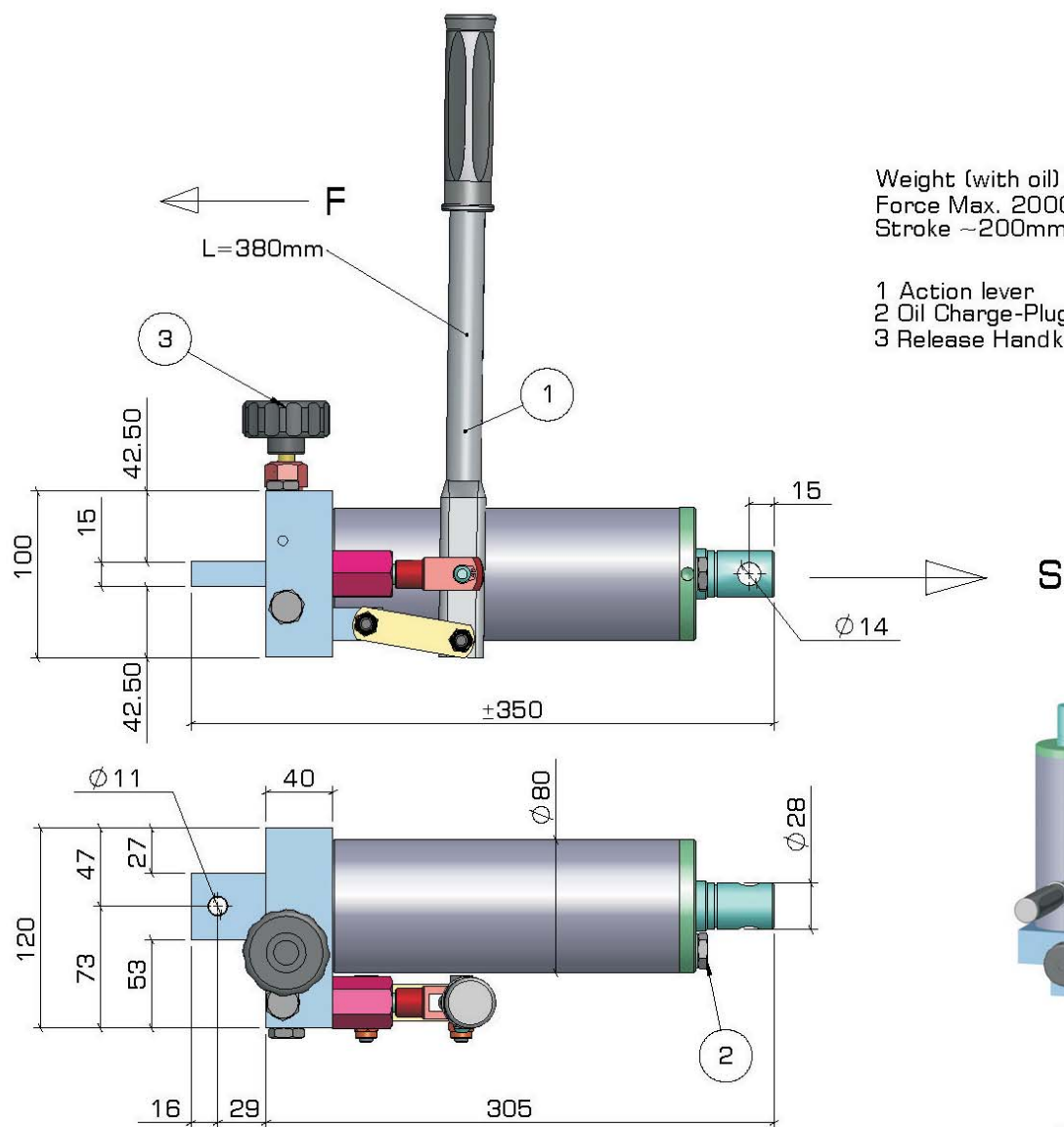
Mounting :
Any position.



Dimensions and characteristics not binding. Modifications reserved without prior notice.

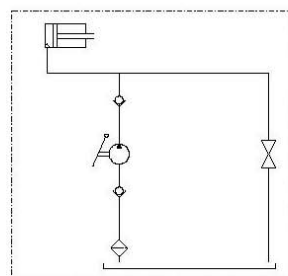
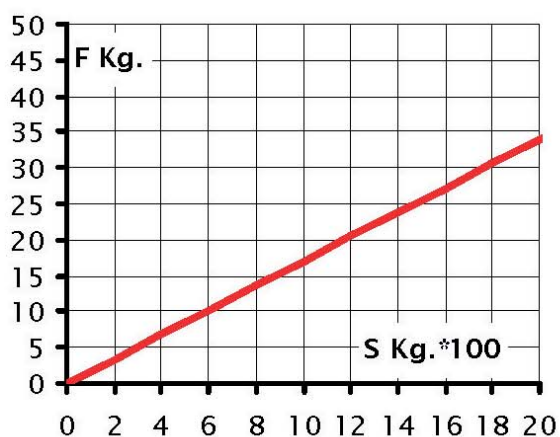
Hydraulic Pump Type GL 249

Single acting function pump with built-in single acting cylinder



Mounting :

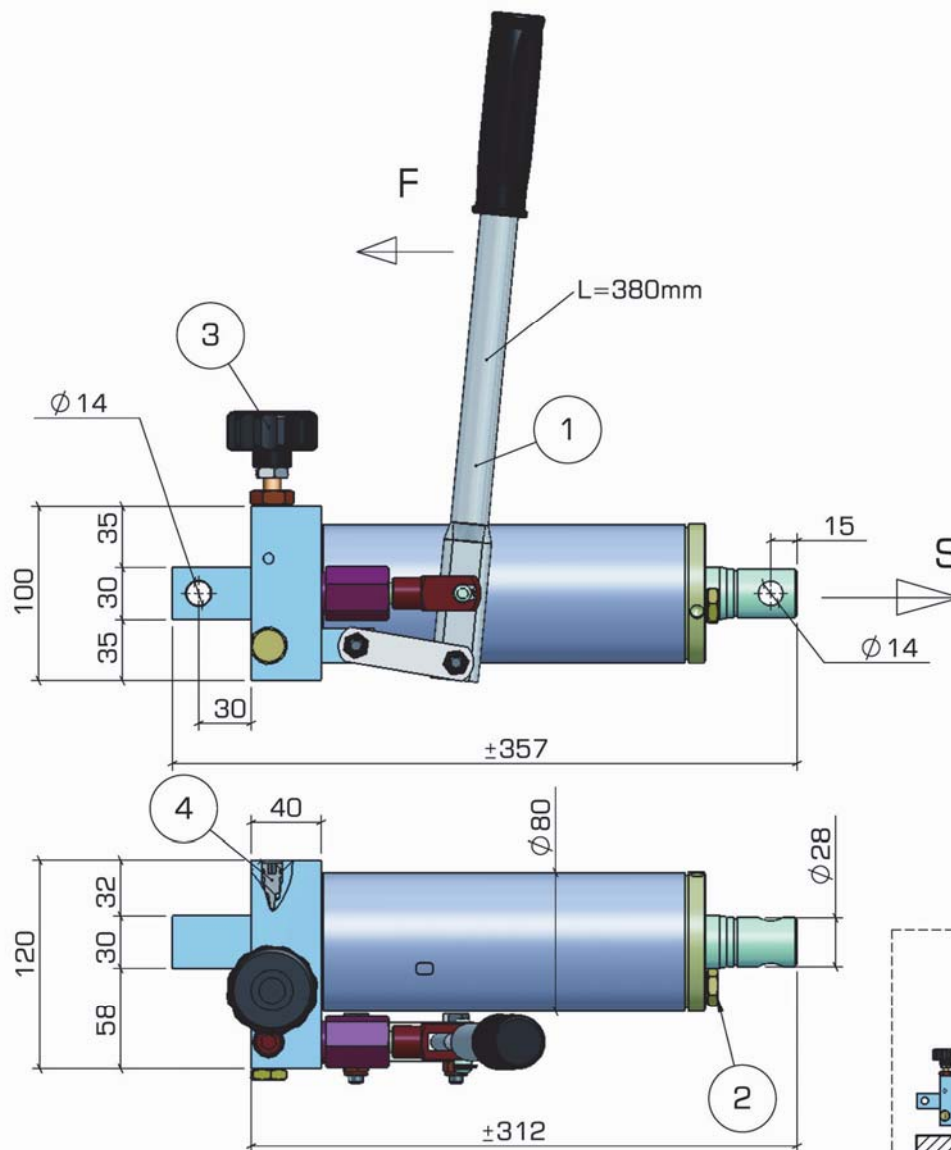
From horizontal to
vertical cylinder rod up



Dimensions and characteristics not binding. Modifications reserved without prior notice.

Hydraulic Pump Type GL 249-RG

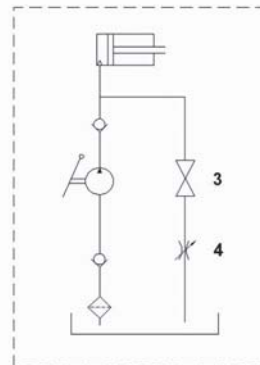
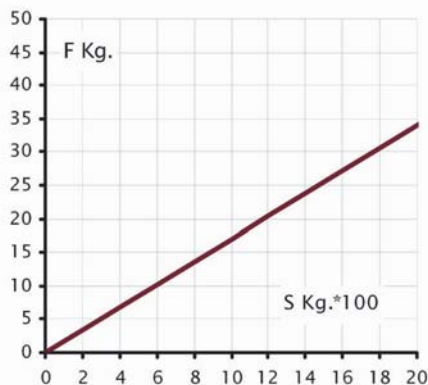
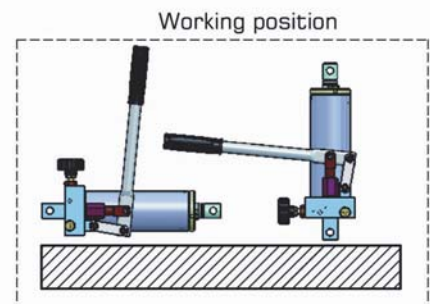
Single acting function pump with built-in single acting cylinder



Weight (with oil) Kg.~10,5

Force Max. 2000 Kg.
Stroke :200mm
Rod-Stroke: 12mm/Cycle

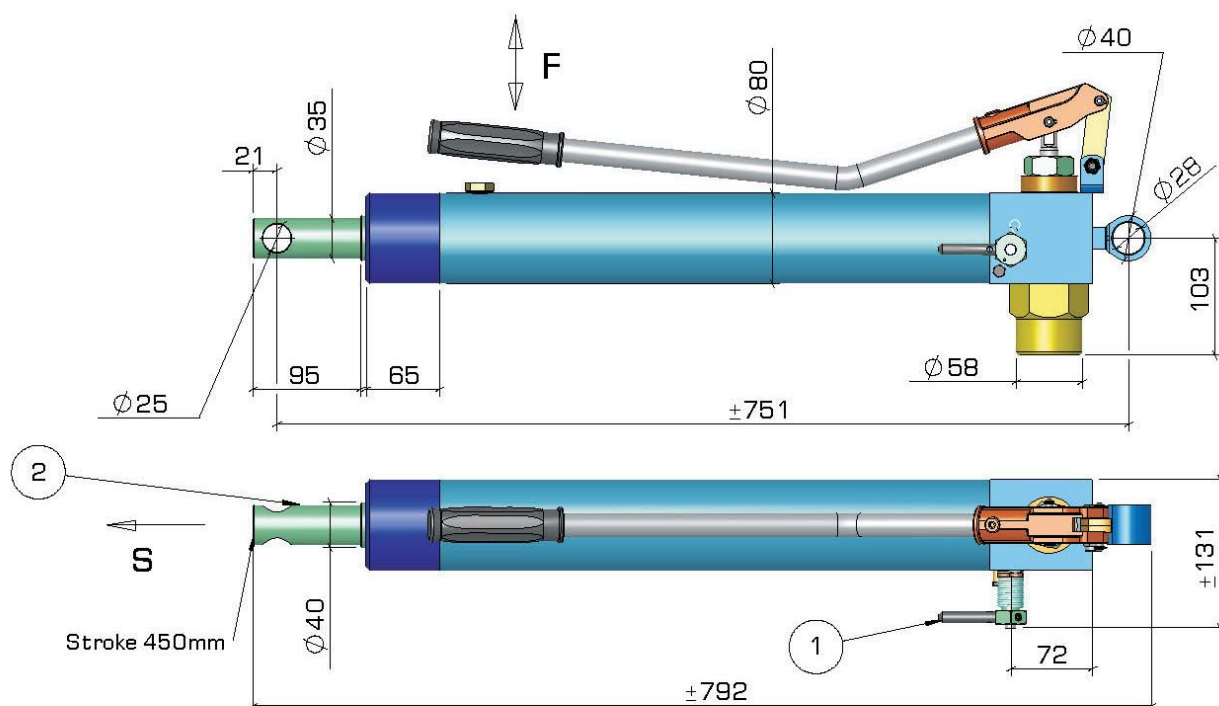
- 1 Action lever
- 2 Oil Charge-Plug
- 3 Release Handknob
- 4 Release setting



Dimensions and characteristics not binding. Modifications reserved without prior notice.

Hydraulic Pump Type GL 254

Double acting function pump with built-in single acting cylinder

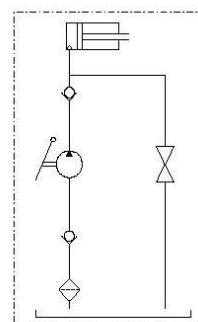
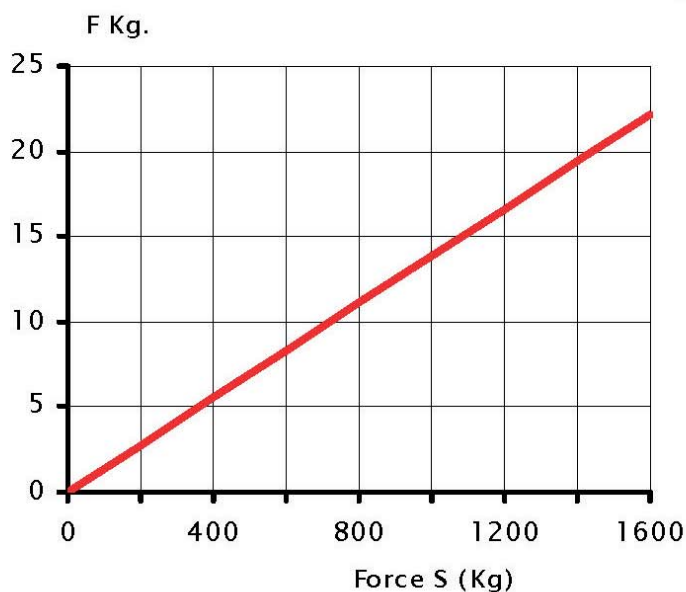


Rod-Stroke per pumping action mm 12
Force Max (S) ~1300Kg
Delivery 14 cc

1 Release Handknob
2 Piston Rod Ø 40

Mounting :

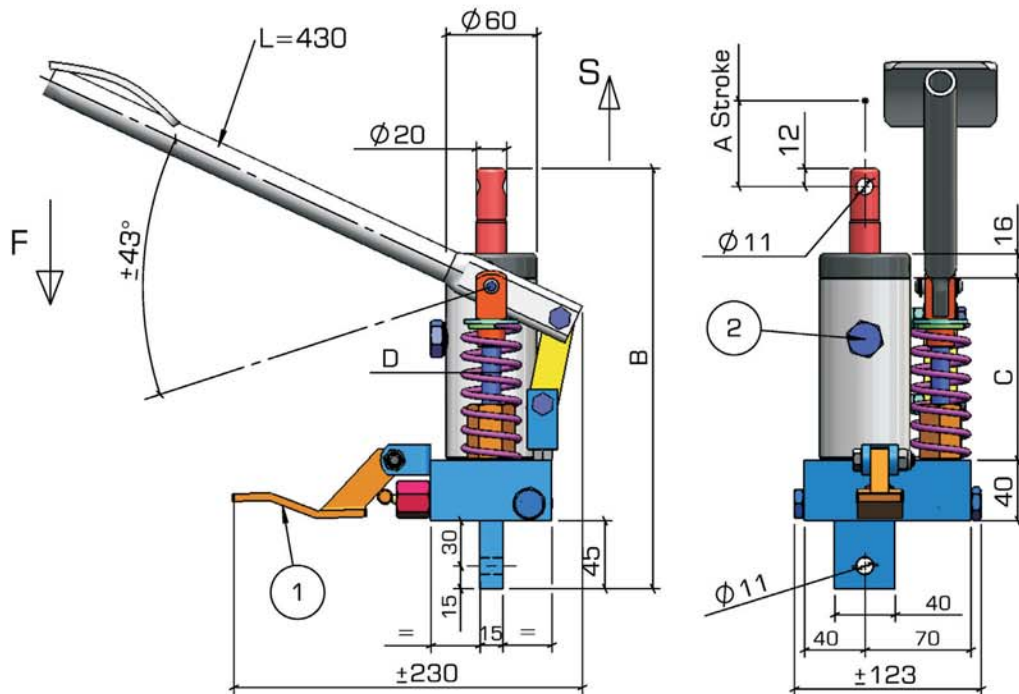
From horizontal to
vertical cylinder rod up



Dimensions and characteristics not binding. Modifications reserved without prior notice.

Hydraulic Pump Type GL 267

Single acting function pedal pump with built-in single acting cylinder

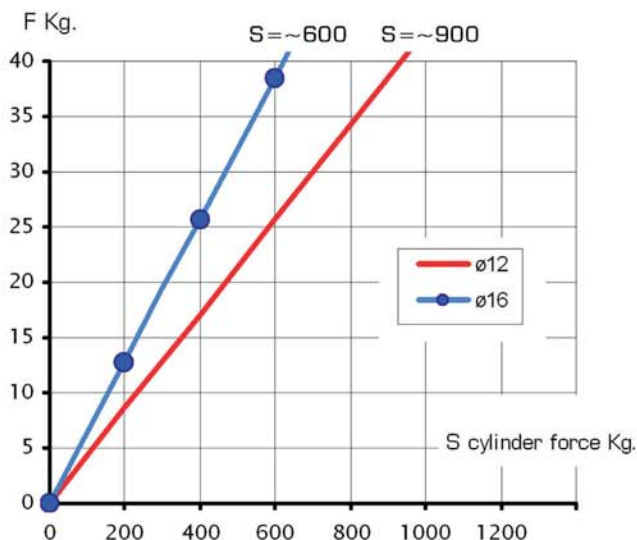
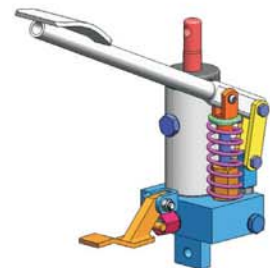


Piston $\varnothing 12$:
Rod-Stroke per pumping Action mm12
S max= ~ 900Kg

Piston $\varnothing 16$ (on request):
Rod-Stroke per pumping Action mm22
S max= ~ 600Kg

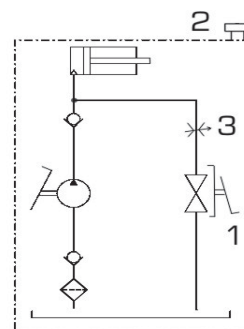
- 1 Release Foot pedal
- 2 Filler Plug
- 3 Return speed setting

Type	A	B	C	D
GL267-130	130	280	128	$\varnothing 12$
GL267-16-130	130	280	128	$\varnothing 16$



Mounting:

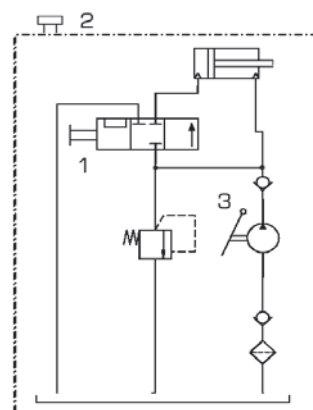
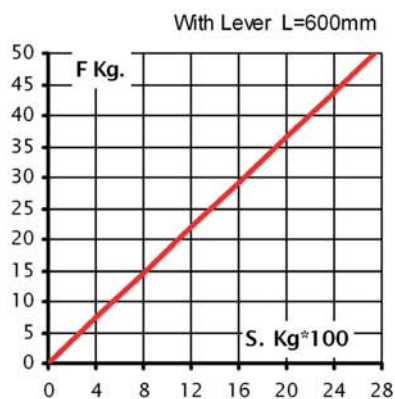
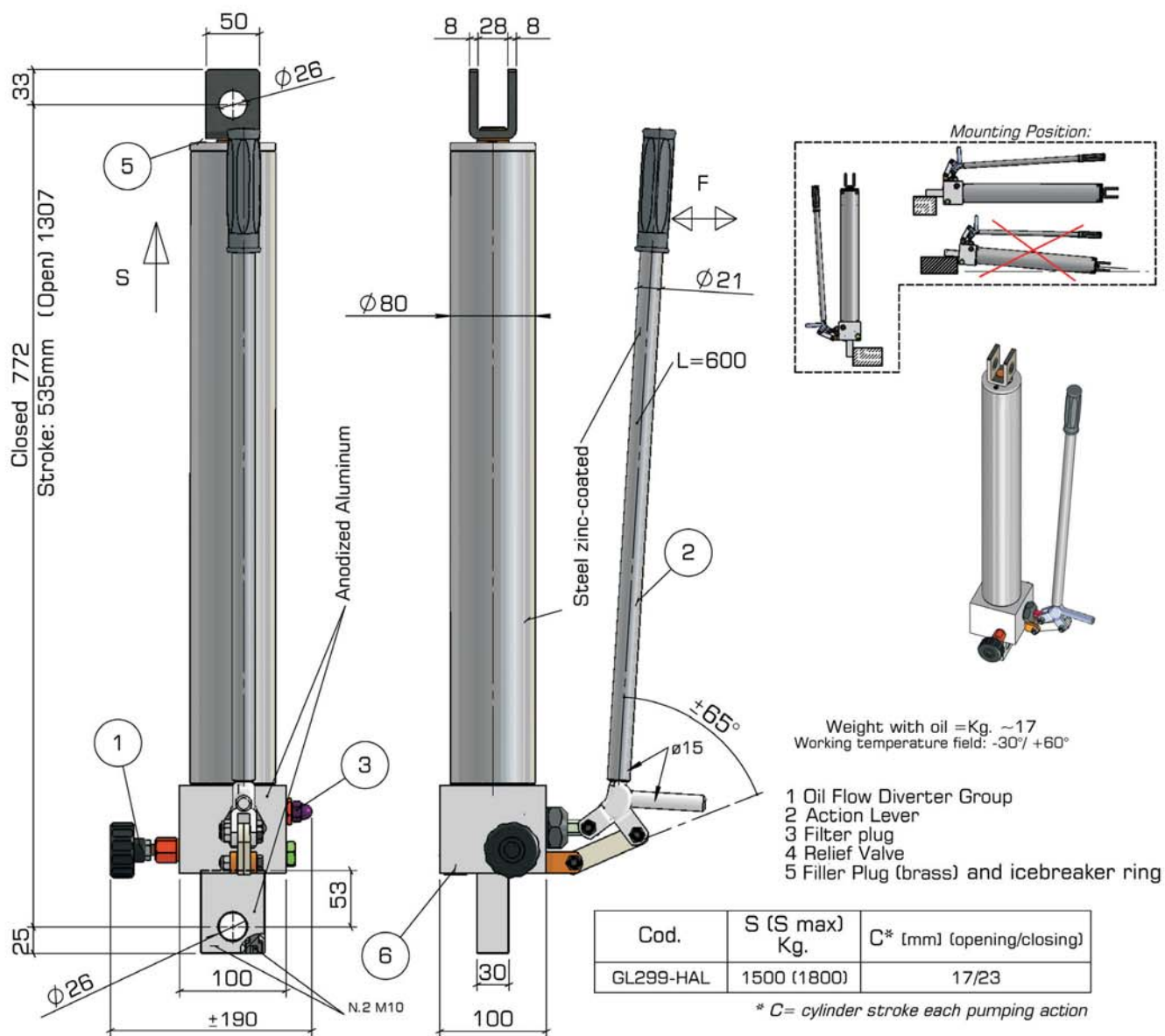
Only as dwg
(Cyl. rod up)



Dimensions and characteristics not binding. Modifications reserved without prior notice.

Hydraulic Pump Type GL 299-HAL

Double acting function pump with built-in double acting cylinder



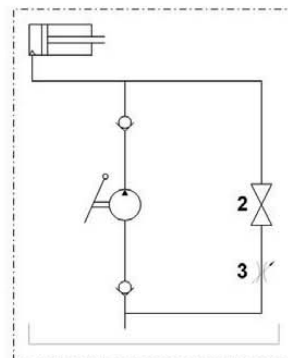
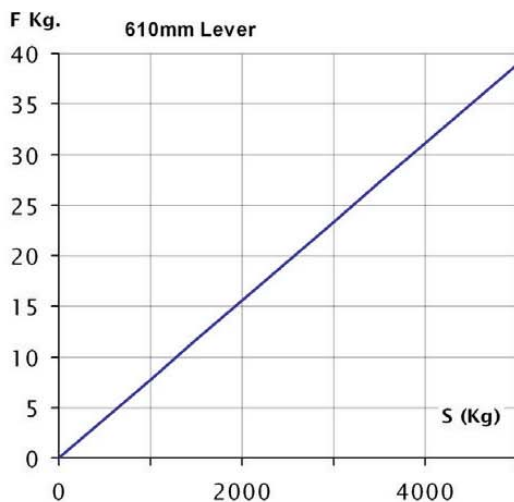
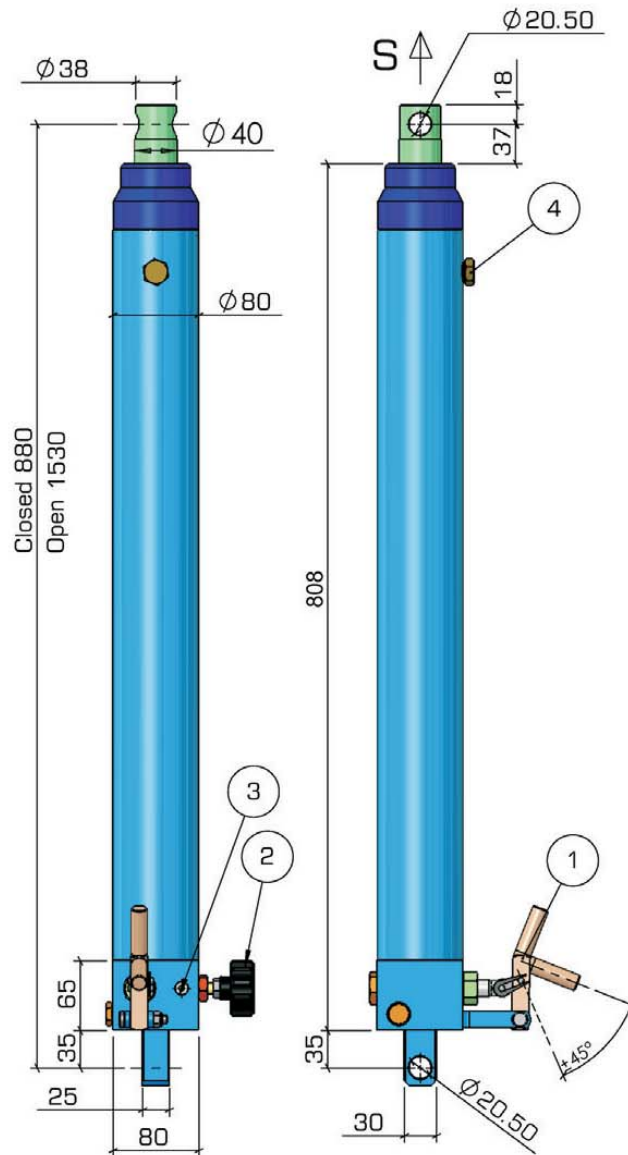
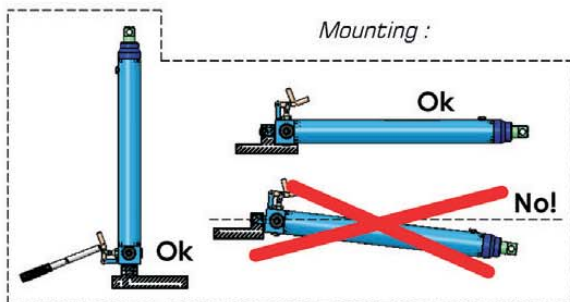
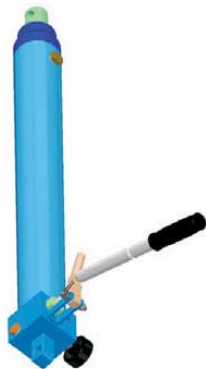
Dimensions and characteristics not binding. Modifications reserved without prior notice.

Hydraulic Pump Type GL 304

Double acting function pump with built-in single acting cylinder

Weight ~22Kg
Delivery x cycle ~9cc
Cylinder Stroke 650mm
Cylinder force S ~4500Kg.
Rod-stroke per pumping action: ~6mm

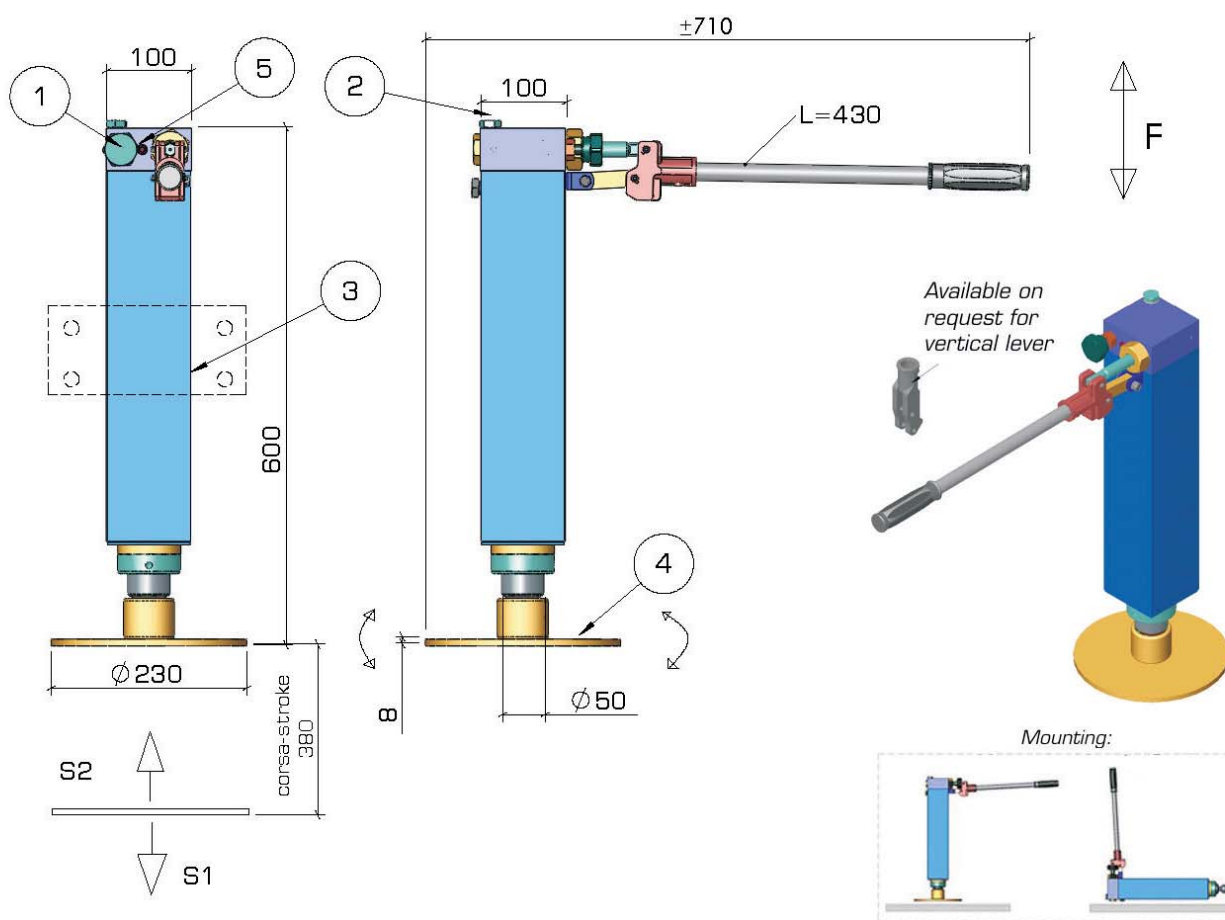
- 1 Action Lever
- 2 Release handknob
- 3 Oil flow return setting
- 4 Filler plug



Dimensions and characteristics not binding. Modifications reserved without prior notice.

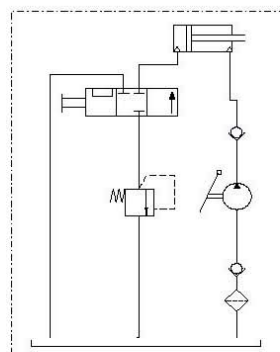
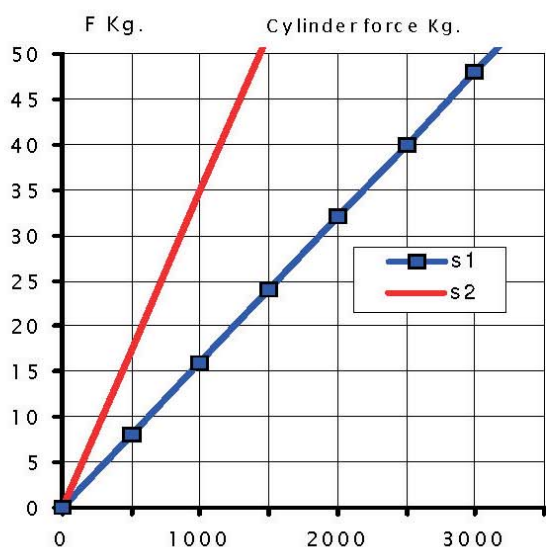
Hydraulic Foot Pump Type GLDE 25-ICN

Double acting function pump with built-in double acting cylinder



Weight (with oil) Kg. ~28,5
Outgoing force (s1) Kg 3.000
Return force (s2) Kg 1.000
Rod-stroke per pumping action mm 7,8

- 1 Oil Flow Diverter Hanknob
- 2 Filler Plug
- 3 Flange For Support (To Be Provided By The Customer)
- 4 Adjustable flange for support
- 5 Max. pressure valve



Dimensions and characteristics not binding. Modifications reserved without prior notice.

As HANSA-TMP has a very extensive range of products and some products have a variety of applications, the information supplied may often only apply to specific situations. If the catalogue does not supply all the information required, please contact HANSA-TMP.

In order to provide a comprehensive reply to queries we may require specific data regarding the proposed application.

Whilst every reasonable endeavour has been made to ensure accuracy this publication cannot be considered to represent part of any contract, whether expressed or implied.

HANSA-TMP reserves the right to amend specifications at their discretion.



Dutch Hydraulic Consultants	Tel.	+31-(0)6-83695868
Achterweg ZZ 8	Mail	info@dhc-hydraulic.nl
3216AB Abbenbroek	Web	www.dhc-hydraulic.nl
Nederland		